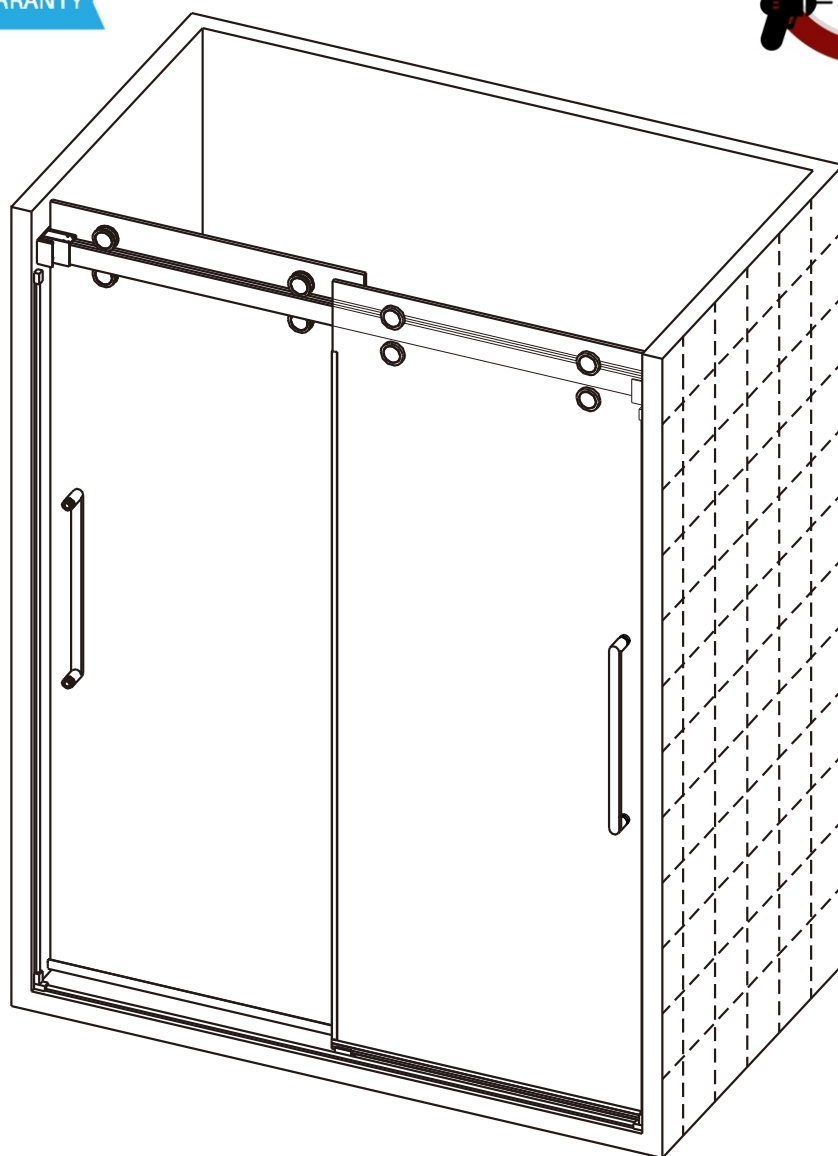


Eurotech SHOWERS

INSTALLATION INSTRUCTIONS

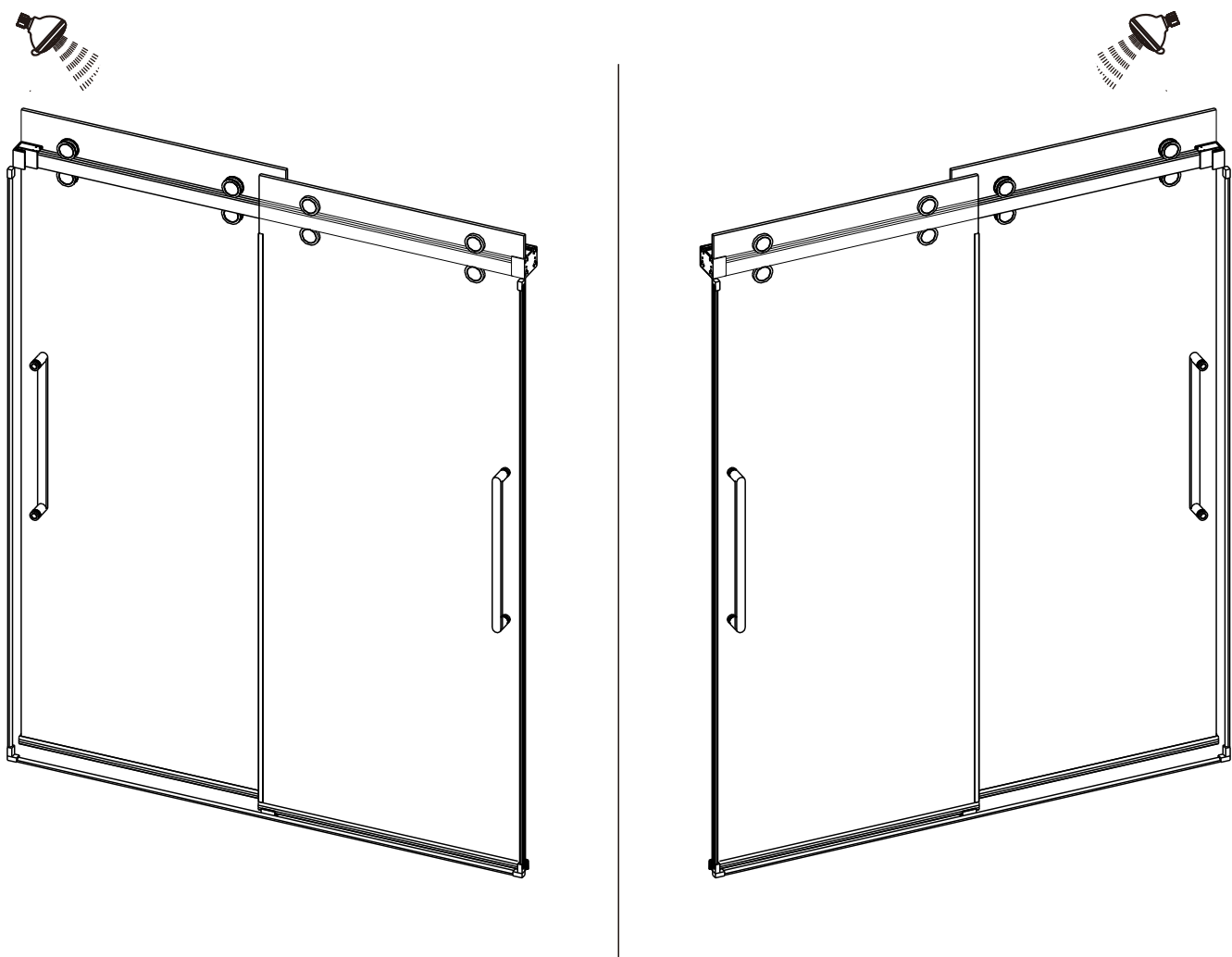


SOPHIA



**THIS SHOWER IS PRE-CUT TO FIT 56 1/2" - 59" WIDE OPENINGS.
DANGER: IF SHOWER IS INSTALLED IN OPENING OVER 59",
THIS COULD RESULT IN SERIOUS INJURY.**

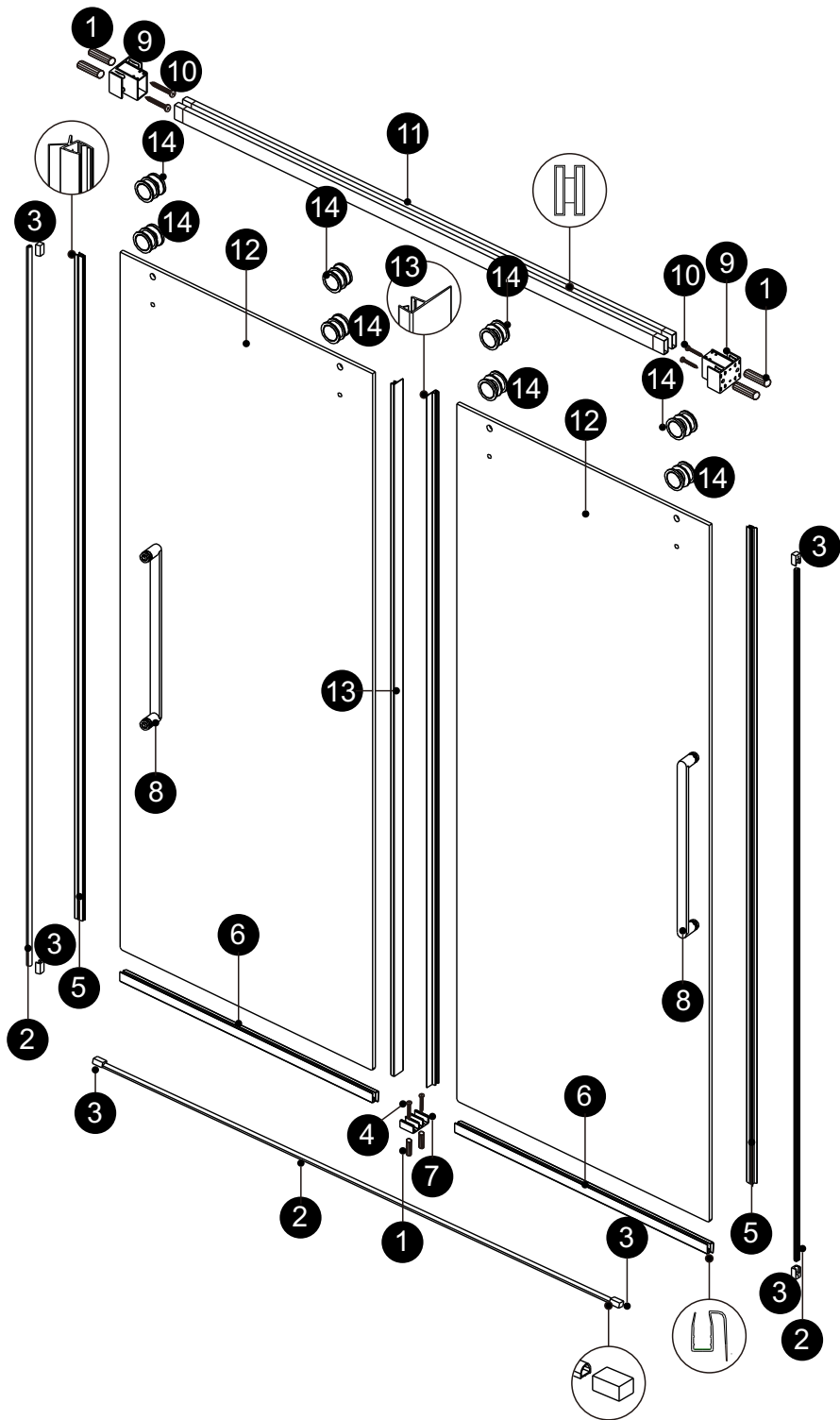
CONFIGURATIONS



***THIS CONFIGURATION IS ILLUSTRATED
IN THIS MANUAL**

**NOTE: THE SOPHIA ENCLOSURE IS REVERSIBLE FOR LEFT OR
RIGHT SIDE SHOWER HEAD CONFIRGURATIONS. THIS MANUAL
WILL SHOW THE LEFT SIDE SHOWER HEAD INSTALLATION. FOR
RIGHT SIDE SHOWER HEAD INSTALLATION, SIMPLY BEGIN ON THE
OPPOSITE WALL AND REVERSE THE ORIENTATION OF THE PARTS
AS NECESSARY.**

◆ Assembly Drawing



PACKING LIST

PART #	DESCRIPTION	Q'TY	PART #	DESCRIPTION	Q'TY
1	Wall Plugs-A	6pcs	9	Wall Brackets	2pcs
2	Aluminium Water Guard-A	2pcs	10	Screws ST5x2"	4pcs
	Aluminium Water Guard-B	1pc	11	Track	1pc
3	End Block	6pcs	12	Door Panels-L	1pc
4	Screws ST4x1 3/8"	2pcs		Door Panels-R	1pc
5	Gasket-A	2pcs	13	Gasket-C	2pcs
6	Gasket-B	2pcs	14	Roller	8pcs
7	Glass Guide	1pc	15	Installation kit	1set
8	Handle	2pcs			

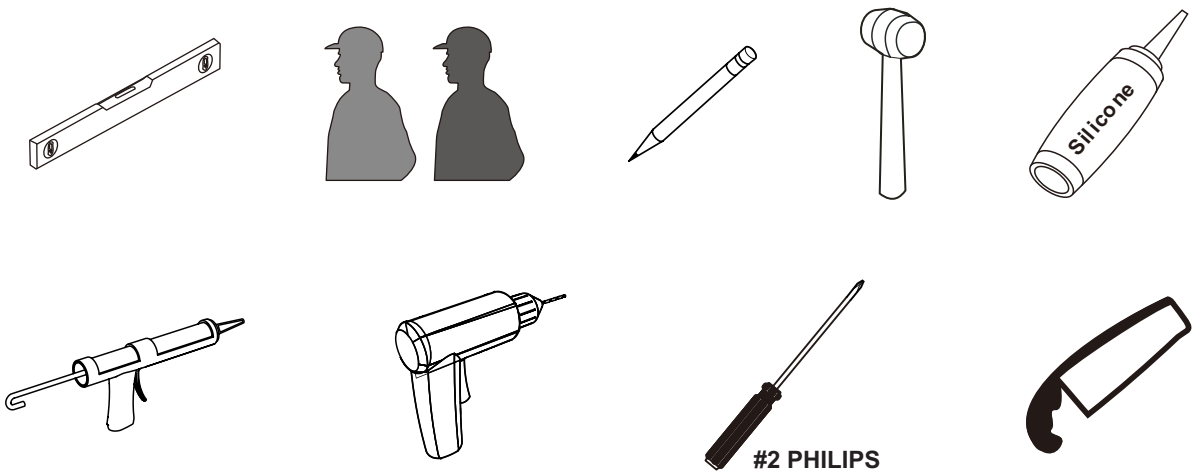
◆ **General Information**

Inspect the product immediately upon receipt for transit damage, missing packs/parts or manufacturing defects.

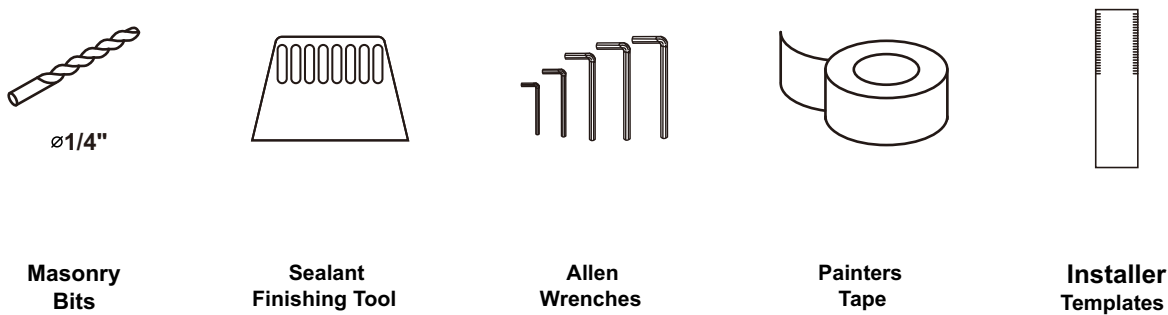
Handle the product with care - Do not set on hard surface and protect all edges and corners from impact. Tempered glass is up to 4 times stronger than annealed glass but edges and corners can be very fragile.

Notes: Read these instructions carefully before start of installation.
Special care should be taken when drilling walls to avoid hidden pipes or electrical cables.
Note: This product is heavy and may require two people to install.

Tools Required

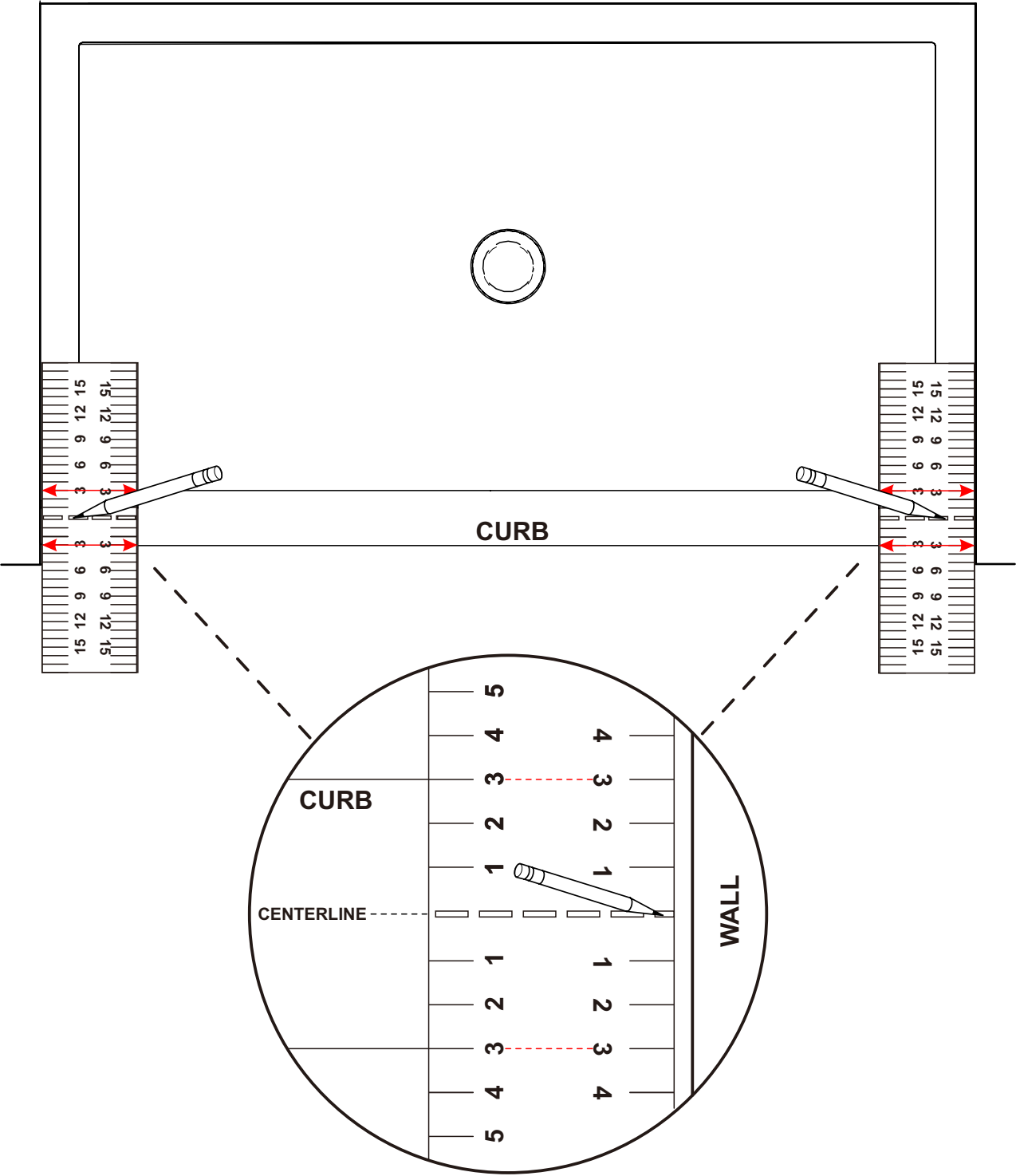


INSTALLATION KIT 15



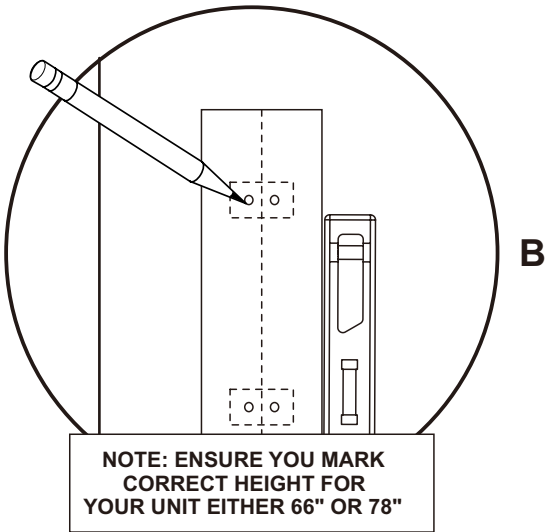
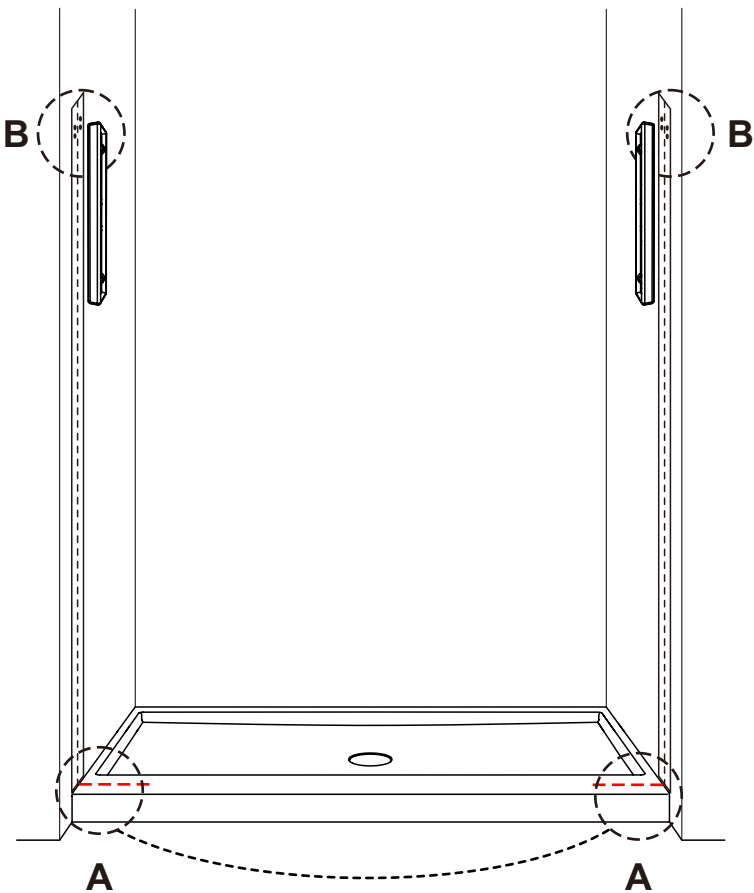
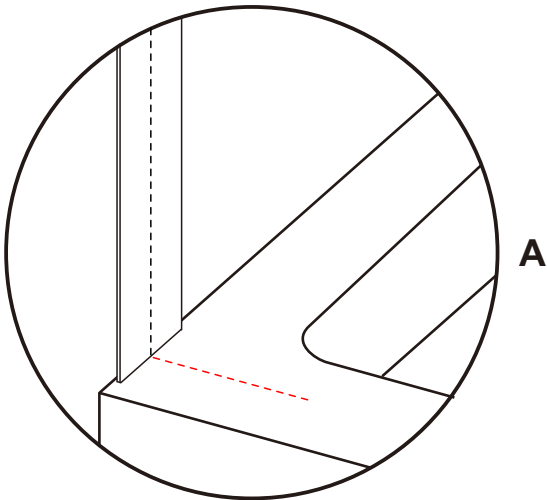
STEP 1 - FINDING CENTERLINE OF CURB.

TO FIND CENTERLINE PLACE TEMPLATE "A" ON CURB AND MATCH NUMBERS ON FRONT AND BACK EDGES OF CURB AND MARK CENTERLINE.

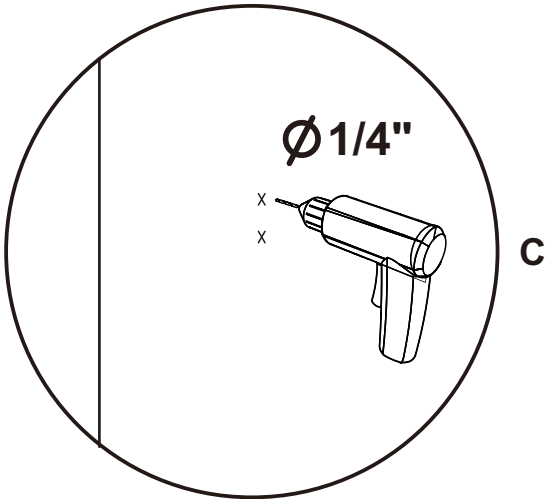


STEP 2 - MARK AND DRILL HOLES FOR WALL BRACKETS.

ENSURE CENTERLINE ON TEMPLATE "B" LINES UP WITH CENTERLINE ON CURB (DIAGRAM A). USE LEVEL TO MAKE SURE TEMPLATE IS PLUMB AND MARK HOLES AND DRILLING (DIAGRAM B AND C). REPEAT STEP FOR OPPOSITE WALL.

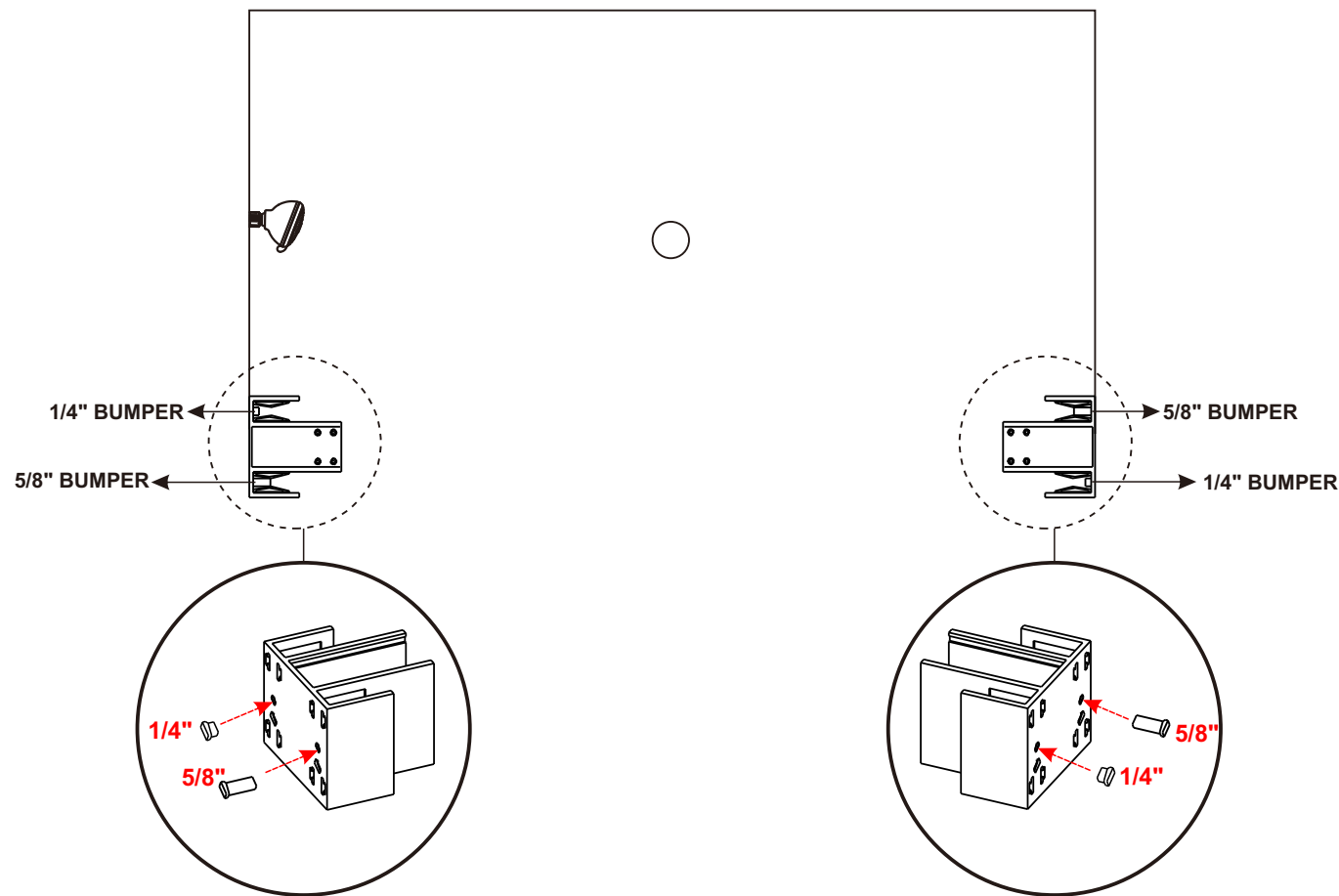


**NOTE: ENSURE YOU MARK
CORRECT HEIGHT FOR
YOUR UNIT EITHER 66" OR 78"**

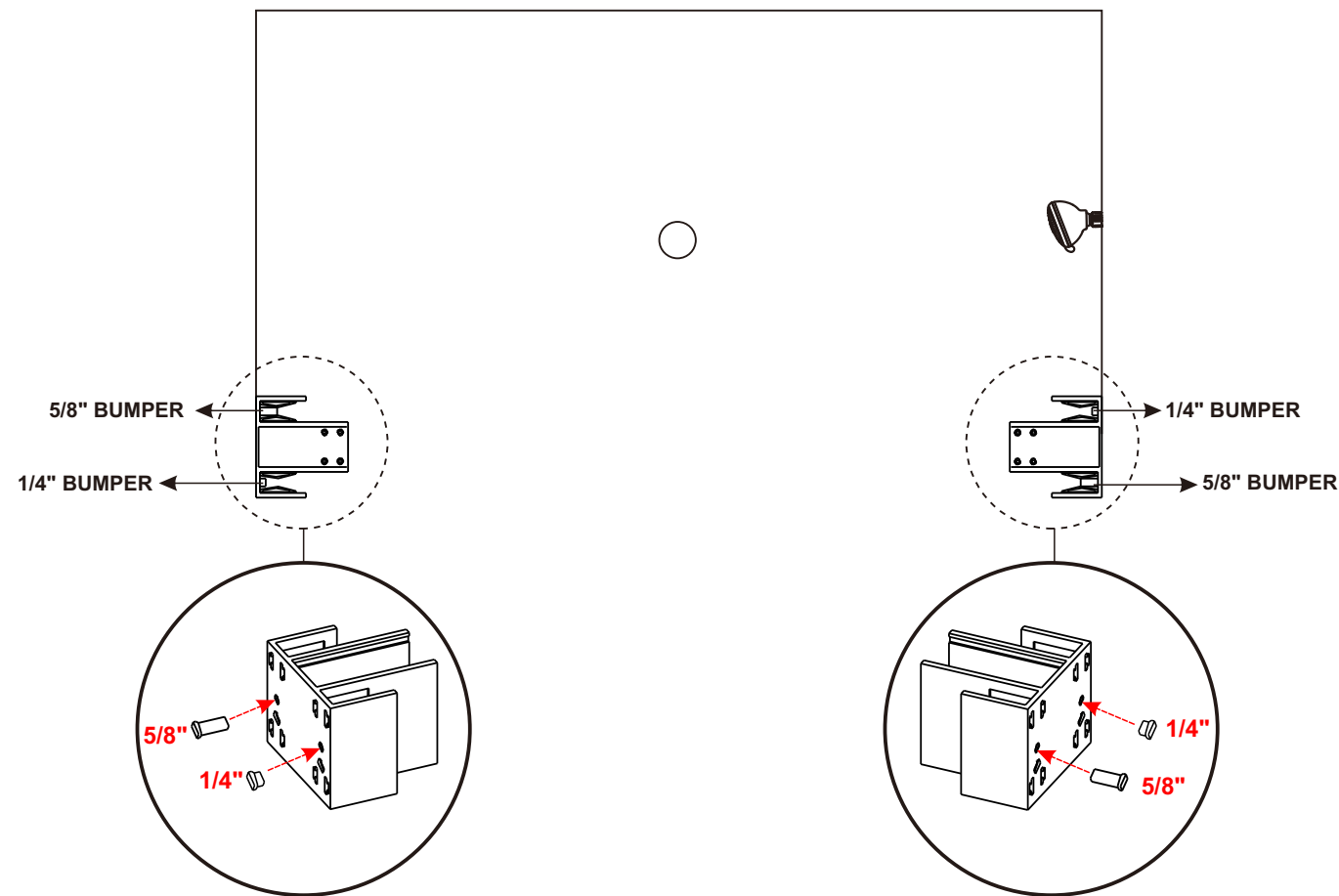


STEP 3 - INSERT BUMPER BLOCKS INTO WALL BRACKETS.

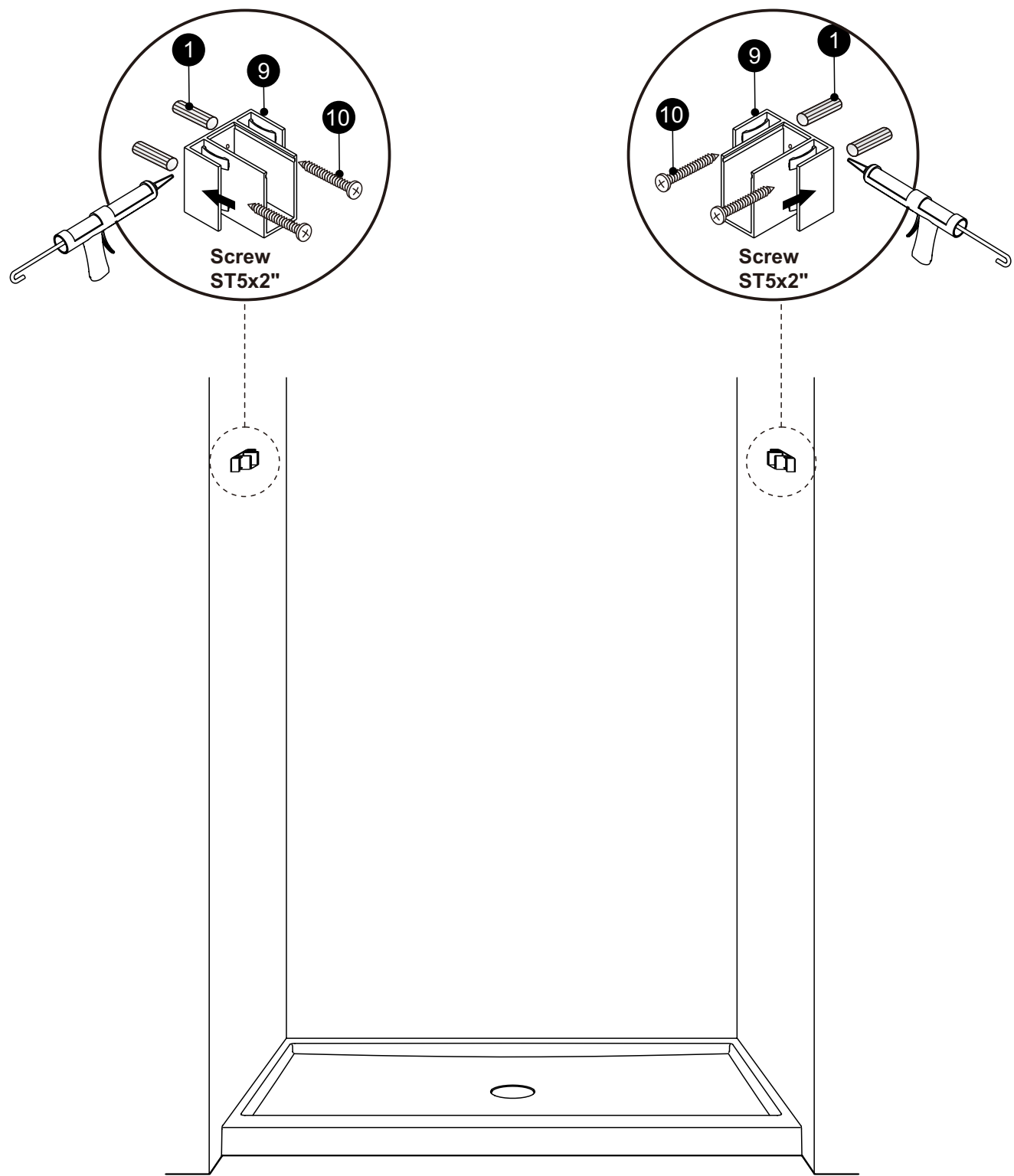
A: FOR CONFIGURATIONS WITH SHOWER HEAD TO THE LEFT INSERT BUMPER BLOCKS INTO WALL BRACKETS AS SHOWN.



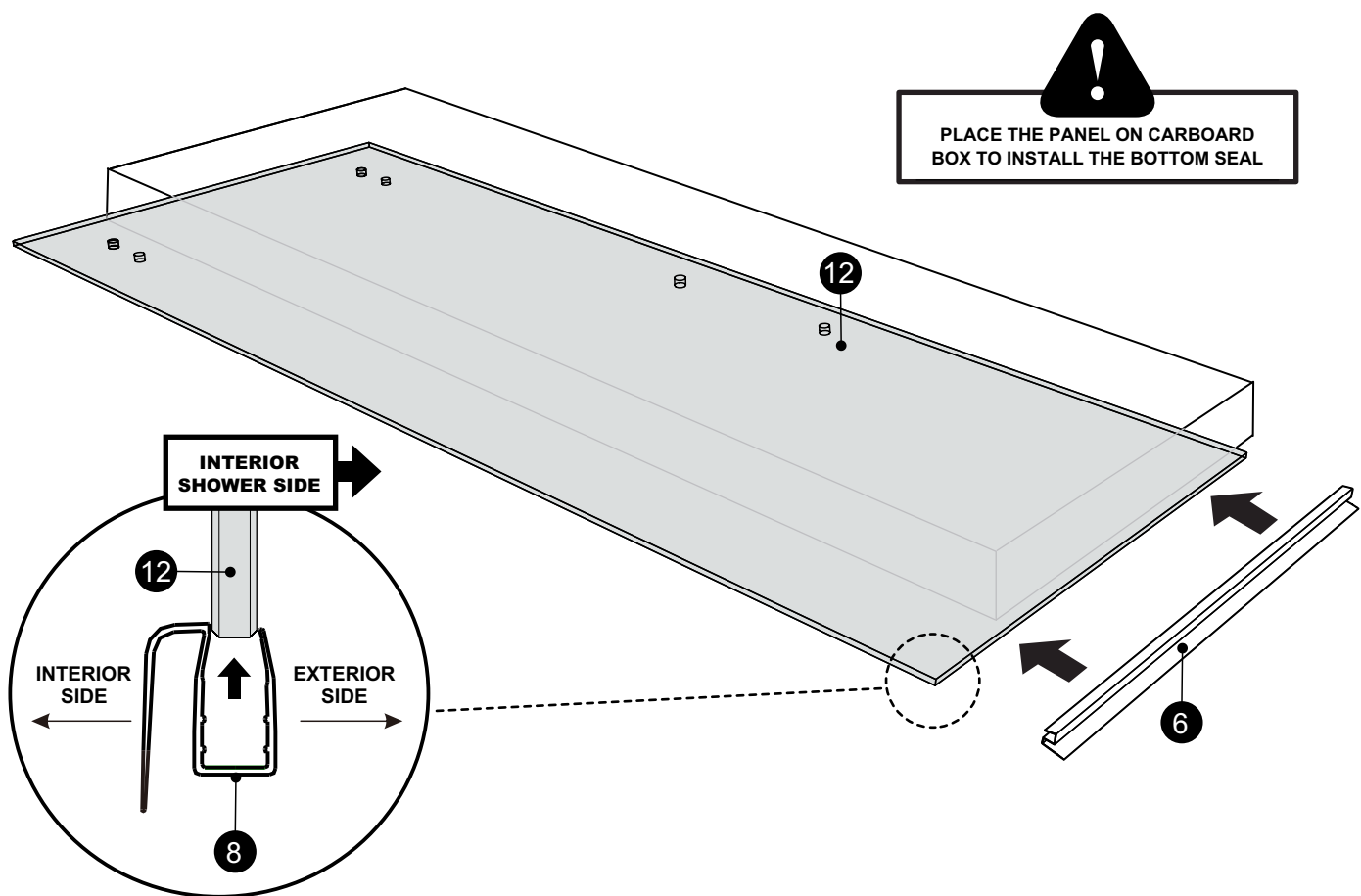
B: FOR CONFIGURATIONS WITH SHOWER HEAD TO THE RIGHT INSERT BUMPER BLOCKS INTO WALL BRACKETS AS SHOWN.



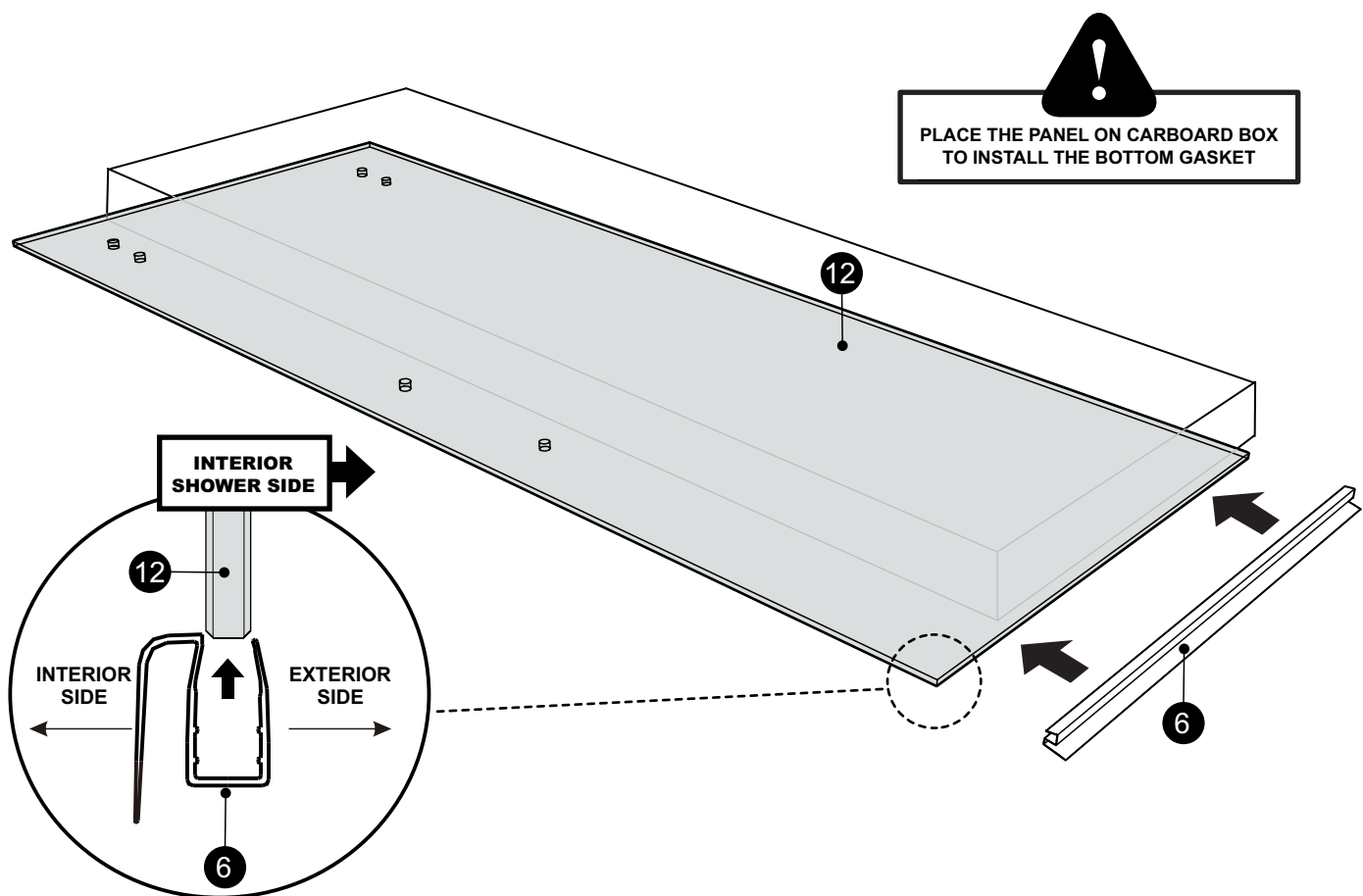
STEP 4 - INSTALL WALL BRACKETS ON LEFT AND RIGHT WALL AS SHOWN.



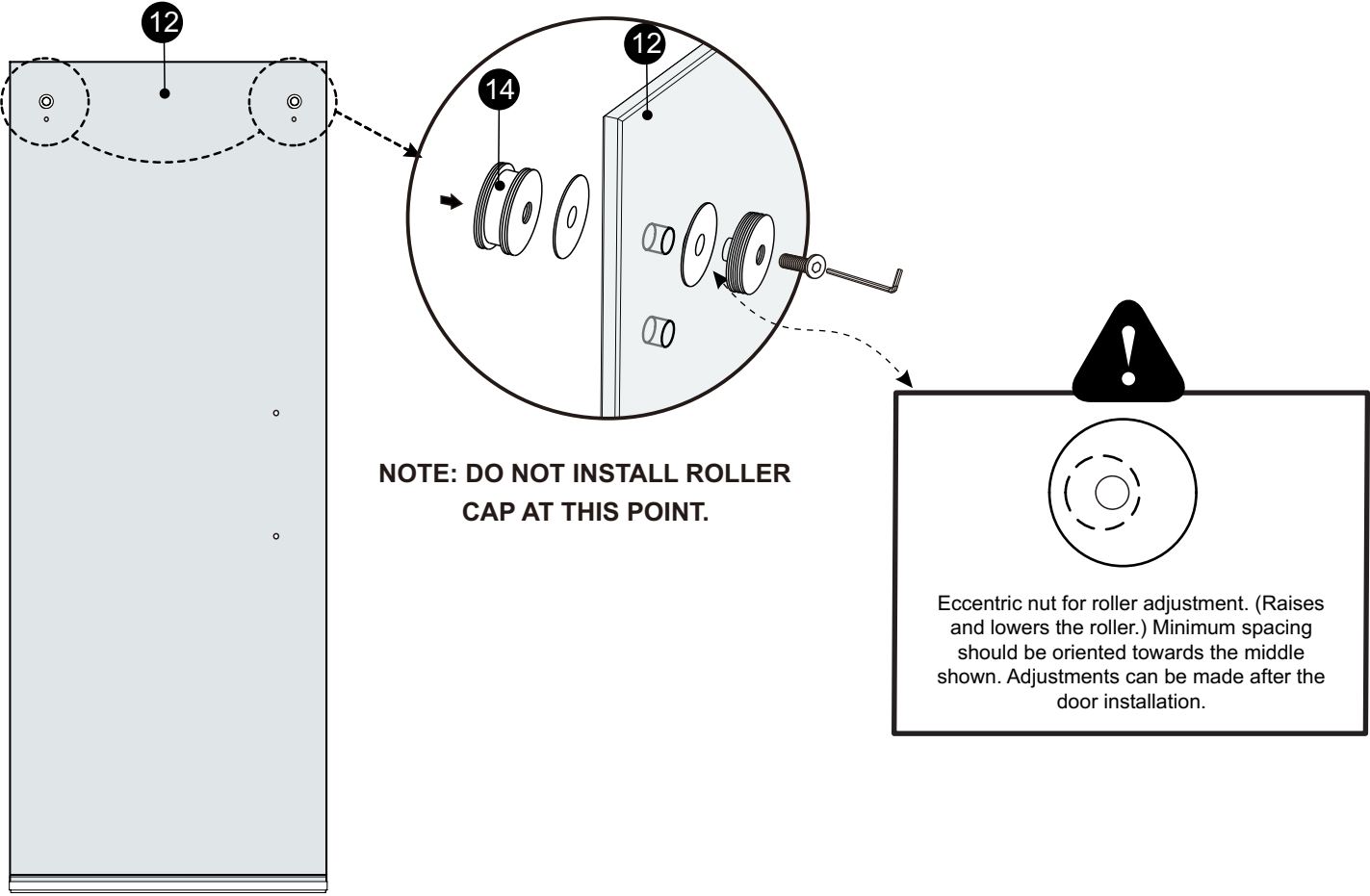
STEP 5A - INSTALLING BOTTOM SEAL ON EXTERIOR DOOR.



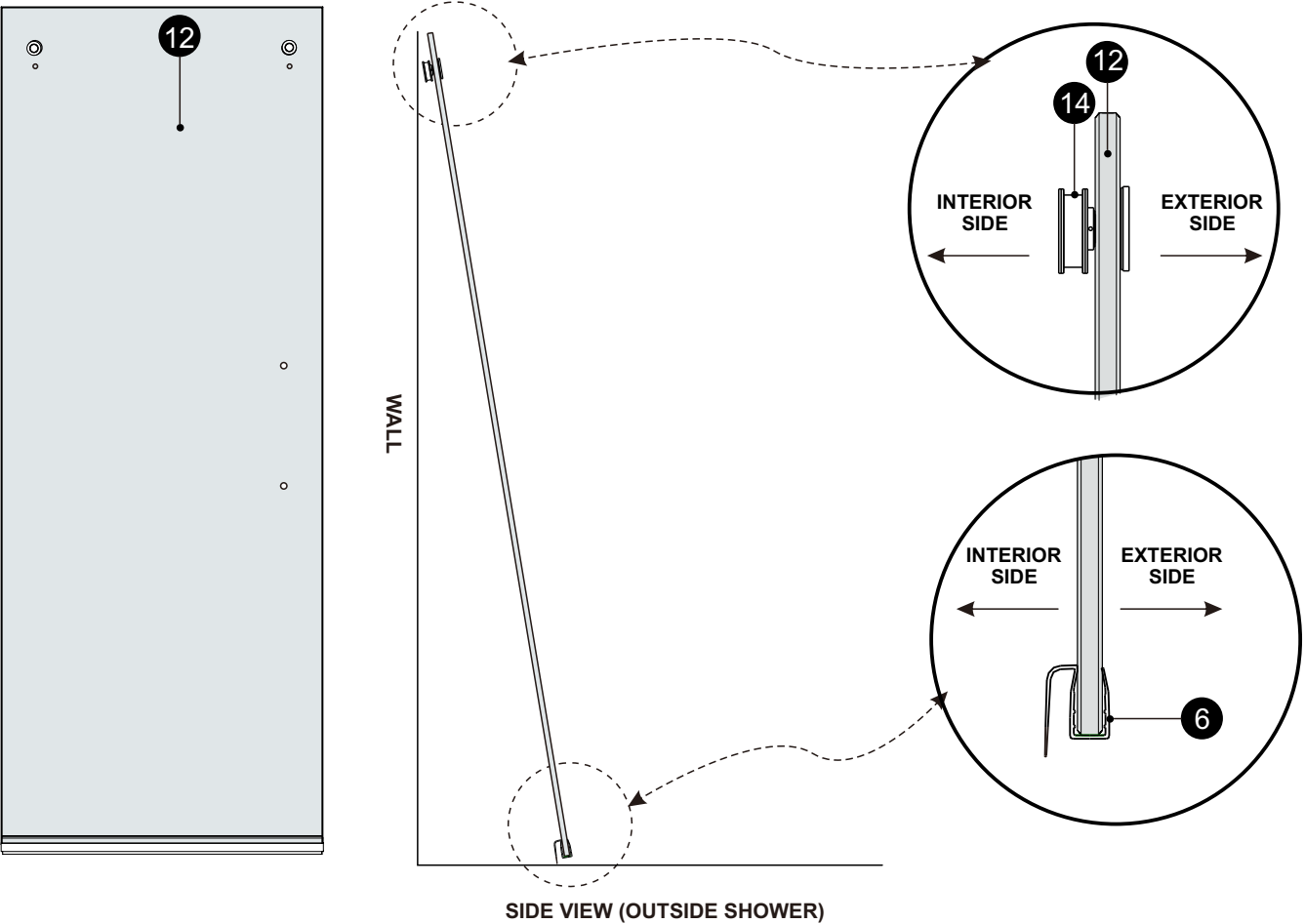
STEP 5B - INSTALLING BOTTOM GASKET ON INTERIOR DOOR.



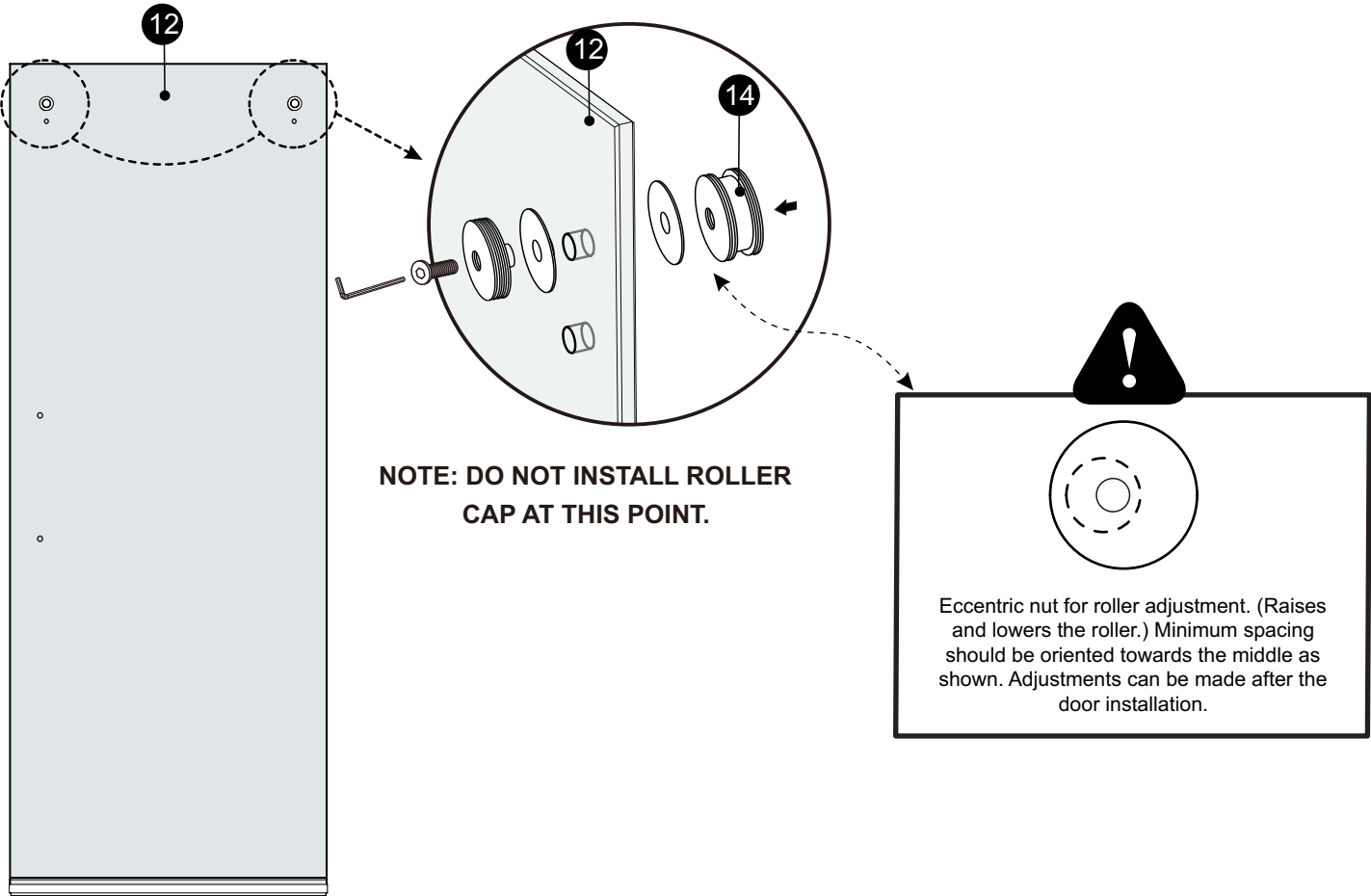
STEP 6 - INSTALLING TOP ROLLERS ON EXTERIOR DOOR.



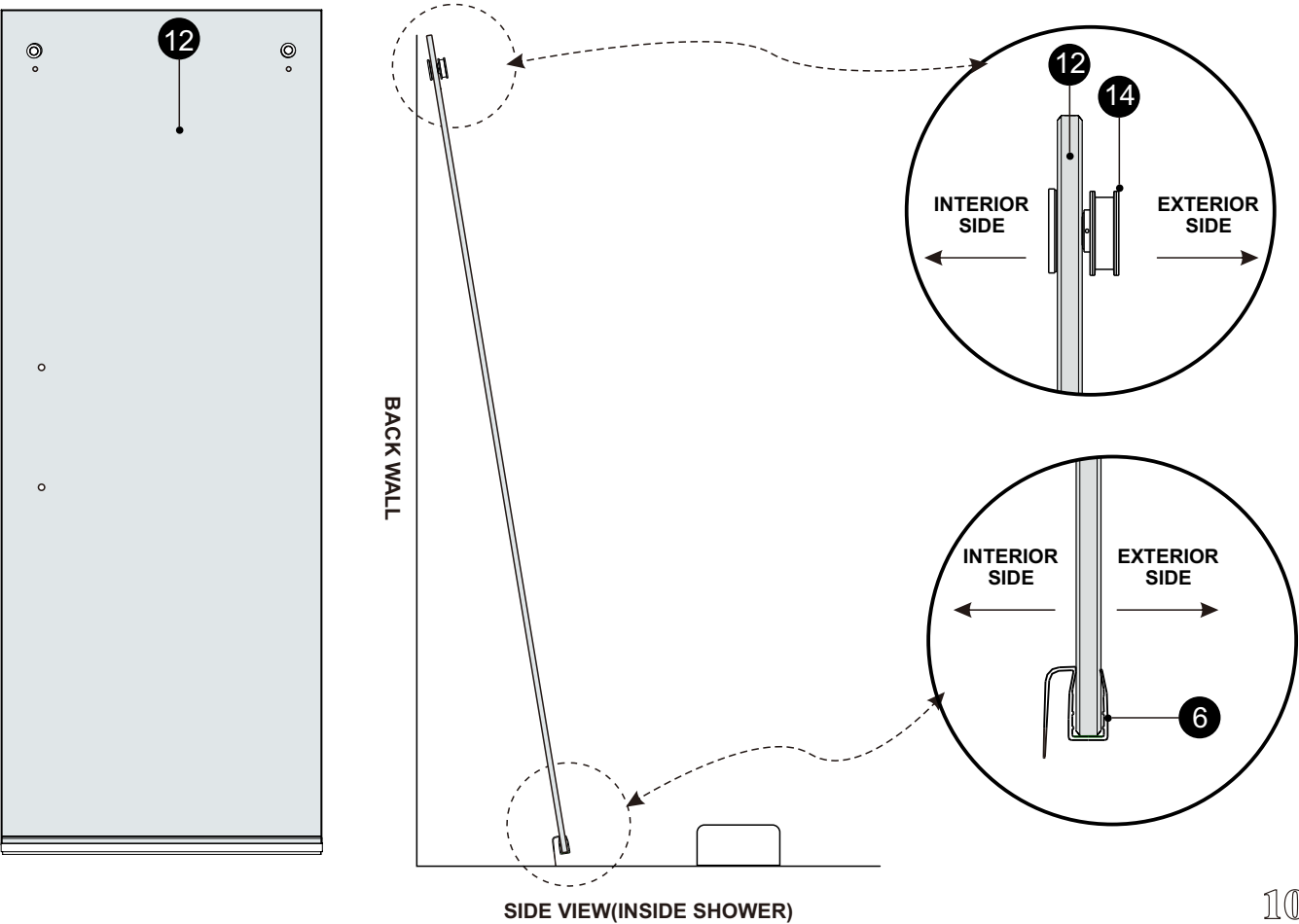
STEP 7 - VERIFY ROLLERS AND PLASTIC WATER DIVERTER ARE INSTALLED PROPERLY AND LEAN DOOR AGAINST A WALL OUTSIDE OF THE SHOWER .



STEP 8 - INSTALLING TOP ROLLERS ON INTERIOR DOOR.

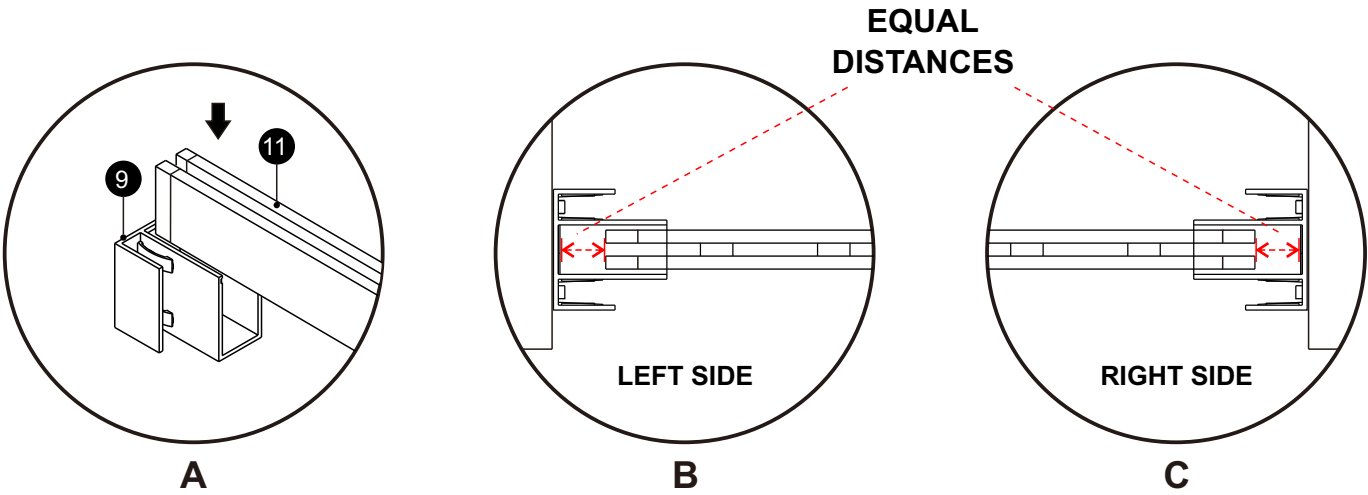


STEP 9 - VERIFY ROLLERS AND PLASTIC WATER DIVERTER ARE INSTALLED PROPERLY AND LEAN DOOR AGAINST WALL ON INSIDE OF SHOWER.

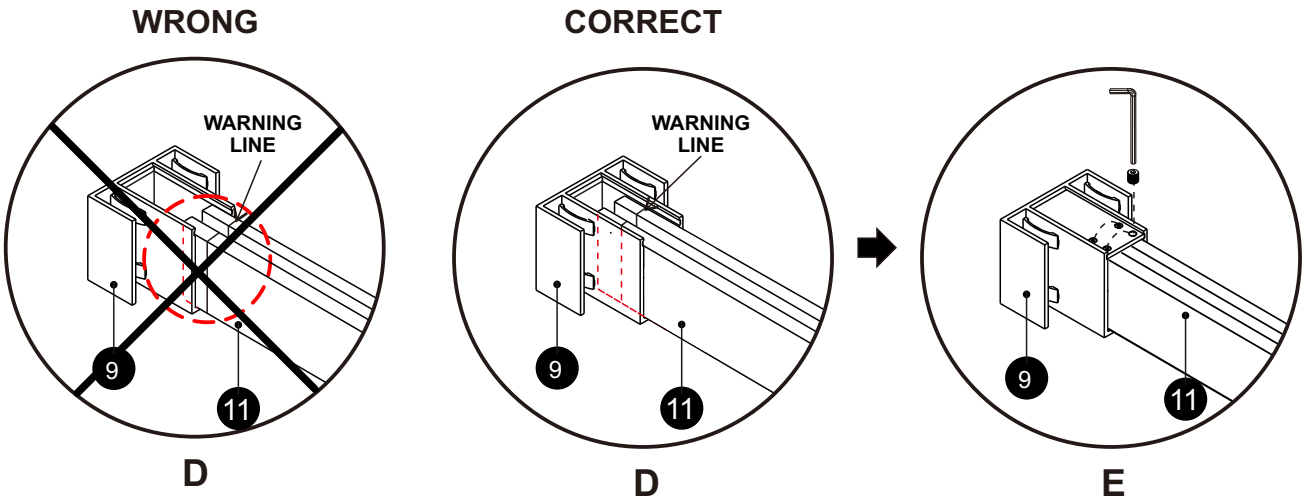


STEP 10 – INSTALLING TRACK.

PLACE TRACK INTO WALL BRACKET AS SHOWN (DIAGRAM A). VERIFY TRACK IS CENTERED BY ENSURING MEASUREMENTS ARE EQUAL (DIAGRAM B AND C).

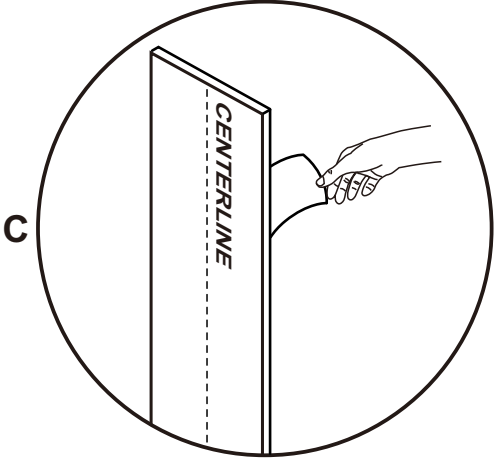
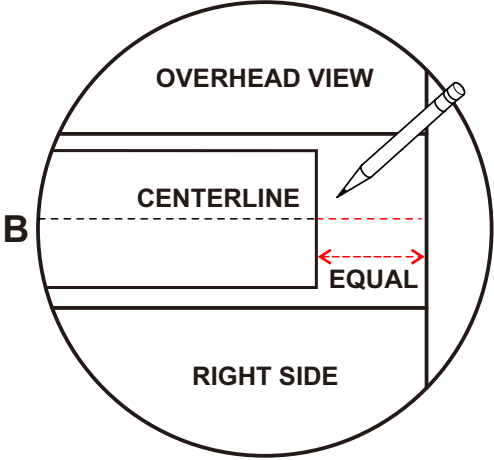
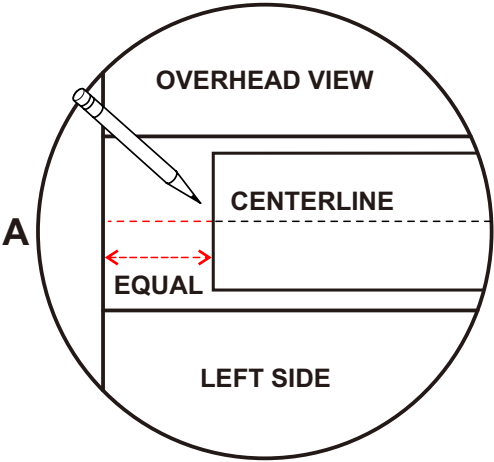
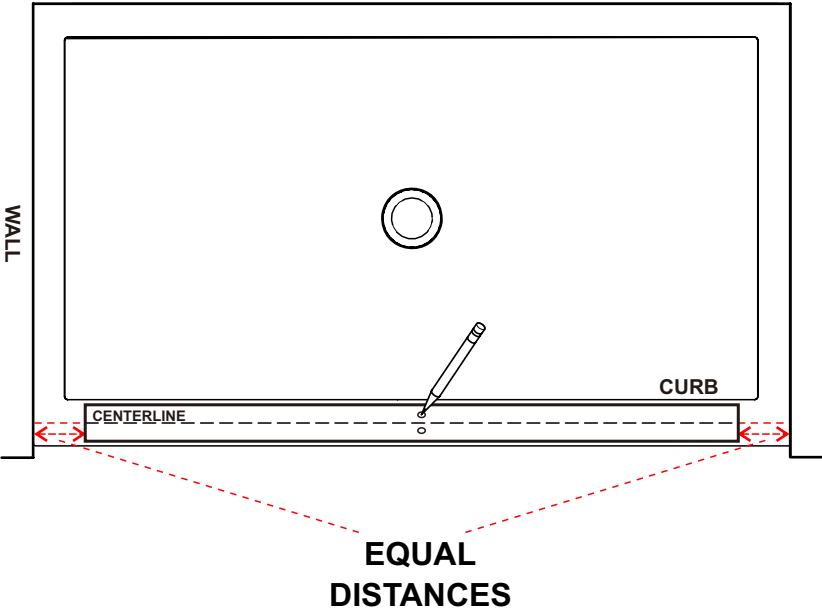


CONFIRM THE TRACK IS POSITIONED PROPERLY BY ENSURING WARNING LINES AT BOTH ENDS OF THE TRACK ARE NOT VISIBLE (DIAGRAM D). ONCE IN PROPER POSITION, INSTALL COVERS AND TIGHTEN SET SCREWS (DIAGRAM E).

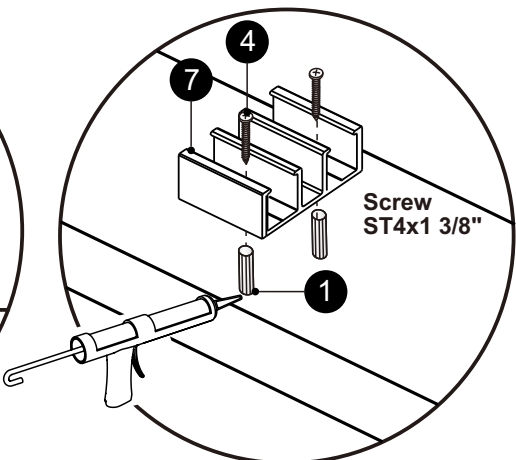
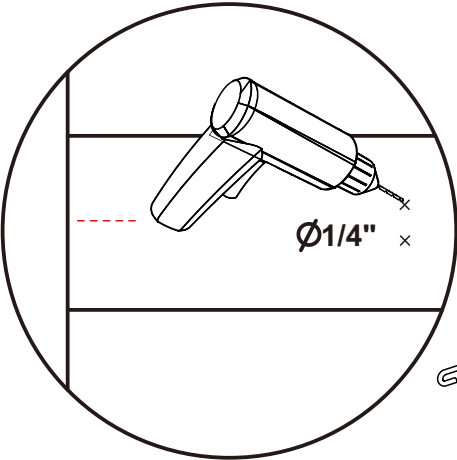
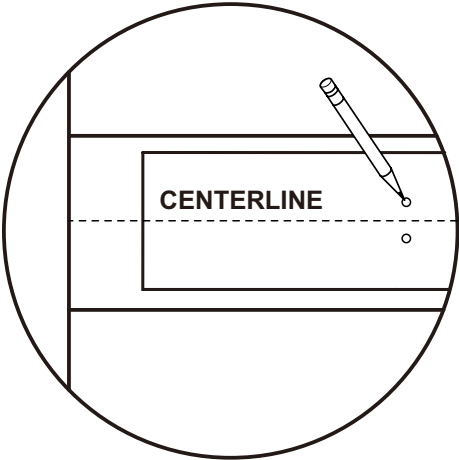


STEP 11 – INSTALLING BOTTOM GUIDE.

LINE UP CENTERLINE ON TEMPLATE “C” WITH CENTERLINE ON CURB, CONFIRM DISTANCE FROM WALL TO EDGE OF TEMPLATE IS EQUAL ON BOTH SIDES. MARK TEMPLATE LOCATION WITH PENCIL (DIAGRAM A AND B). PEEL OFF BACK OF STICKY TABS AND PLACE THE TEMPLATE ONTO CURB (DIAGRAM C).



MARK AND DRILL HOLES FOR BOTTOM GUIDE (DIAGRAM D AND E).



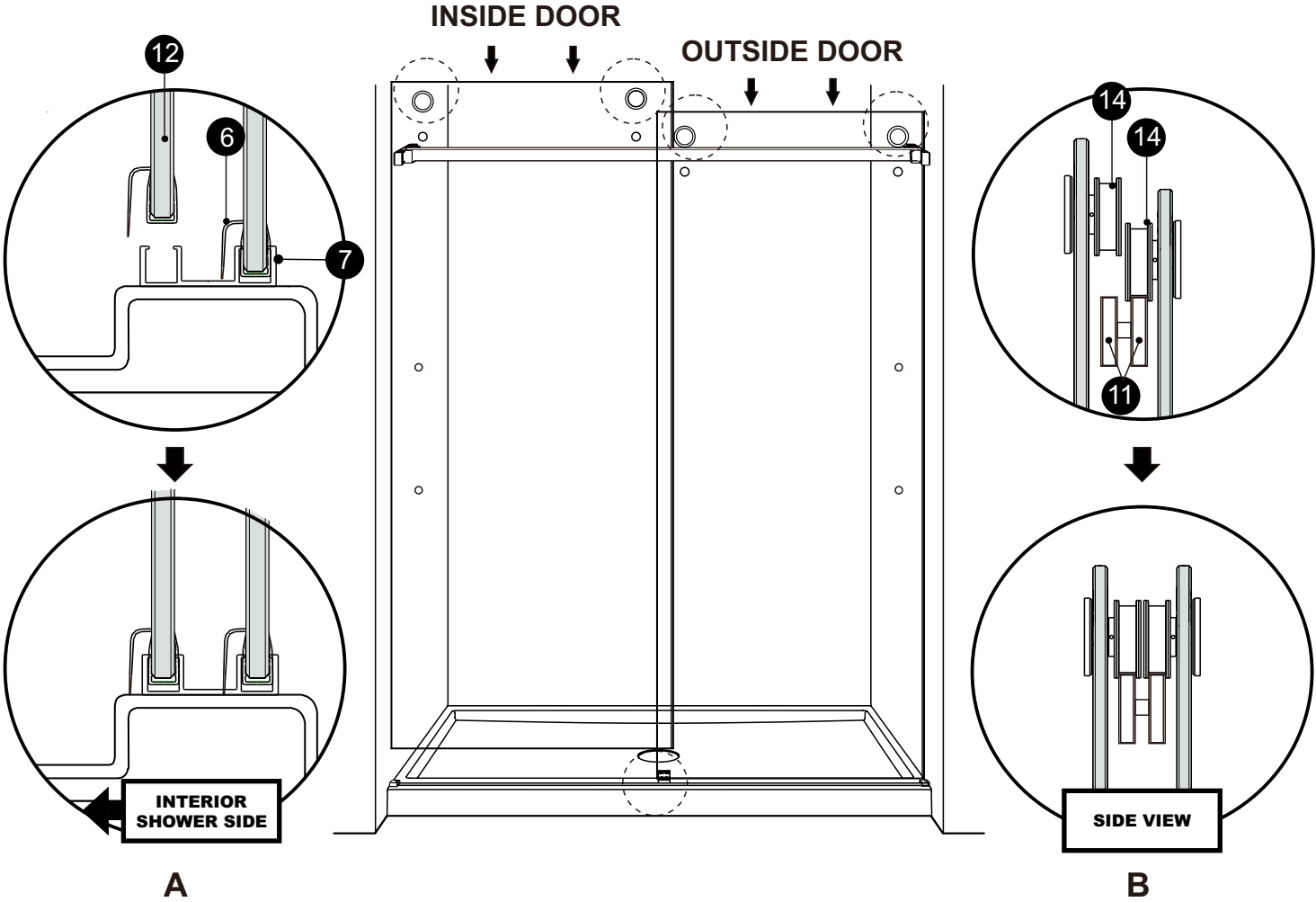
D

E

F

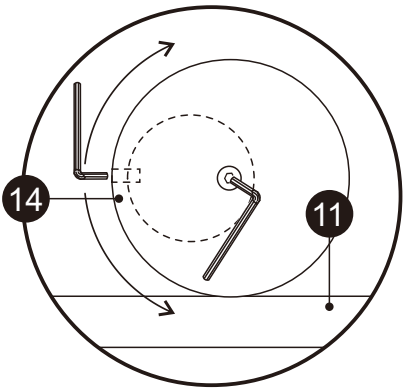
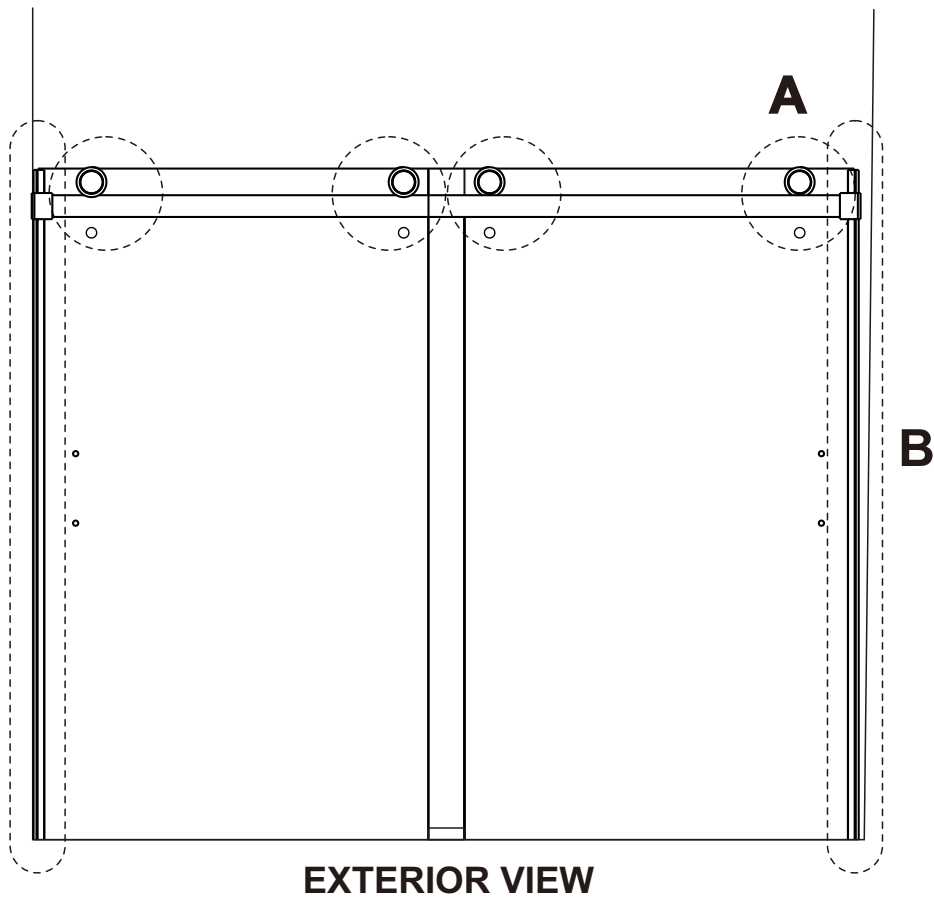
STEP 12 – HANG DOORS.

HANG BOTH DOORS AS SHOWN BELOW. IF DOOR ALIGNS PROPERLY WITH SIDE WALL, INSTALL ROLLER CAPS (DIAGRAM C) AND GO TO STEP 13. IF NOT, GO TO STEP 12A.



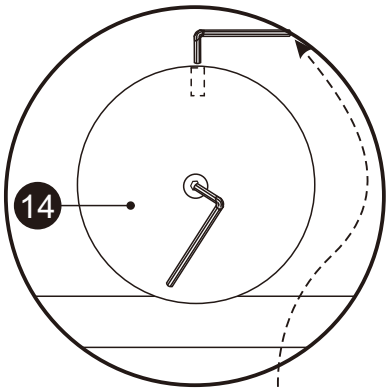
STEP 12A - ALIGNING DOORS TO WALL.

ROTATE ROLLERS TO CLOSE GAPS USING PROVIDED ALLEN WRENCH AS SHOWN (DIAGRAM A). ONCE ALIGNED, TIGHTEN ROLLER SCREW AND INSTALL ROLLER CAP (DIAGRAM B AND C).



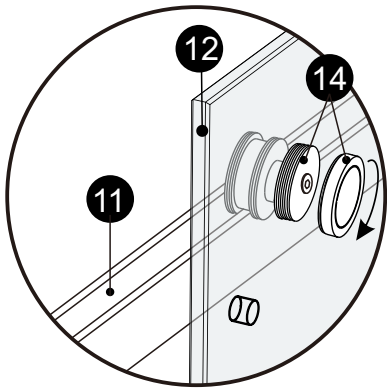
A

NOTE: LOOSEN SCREW 1 TO 2
TURNS TO RELEASE PRESSURE.



B

NOTE: HOLD ALLEN WRENCH
IN PLACE WHEN TIGHTENING
SCREW.

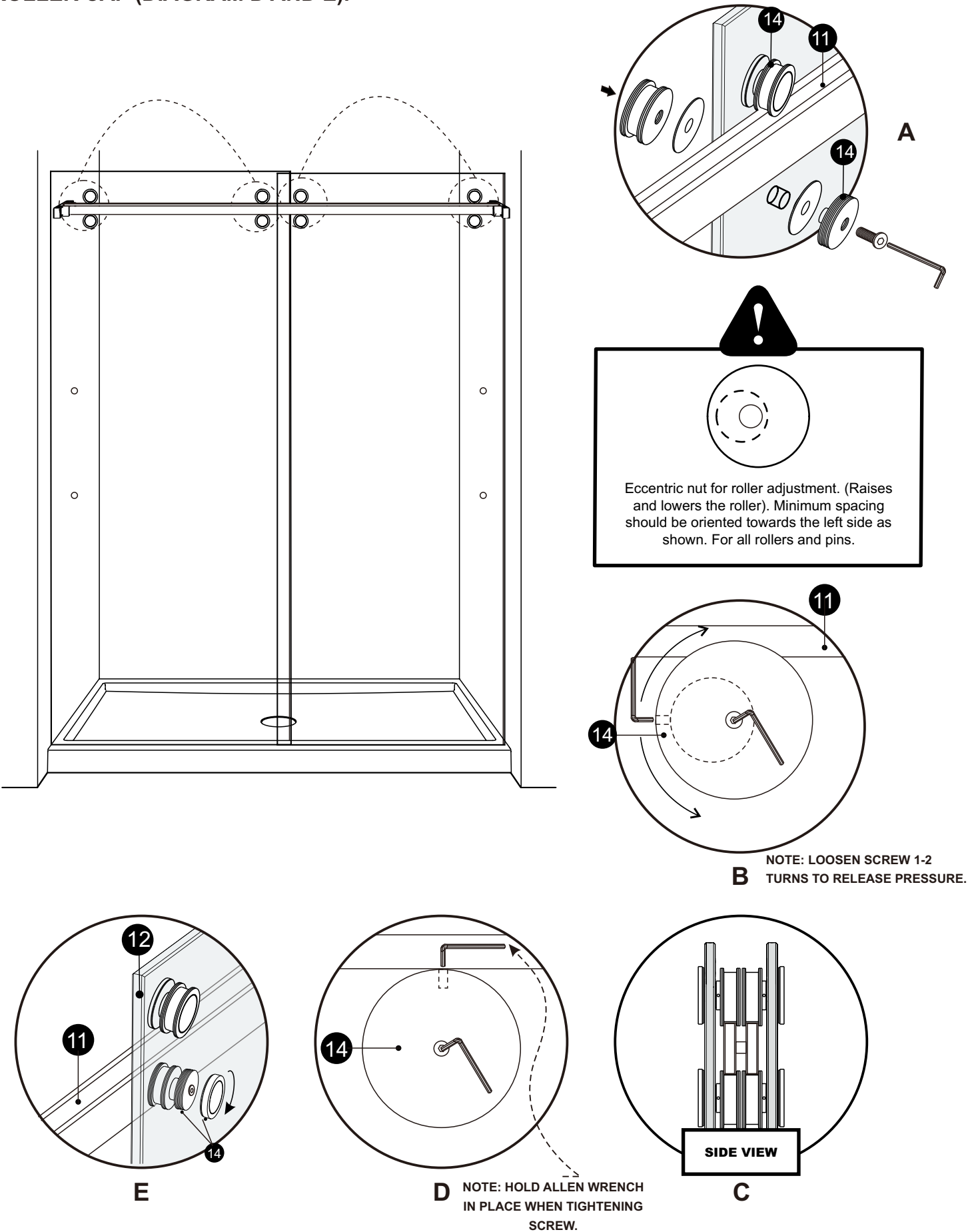


C

INTERIOR VIEW

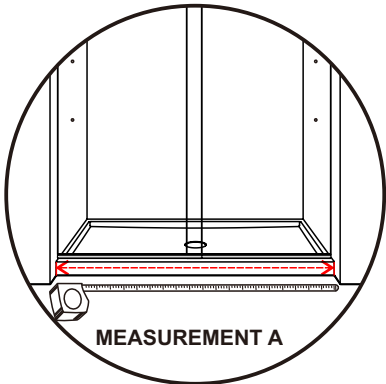
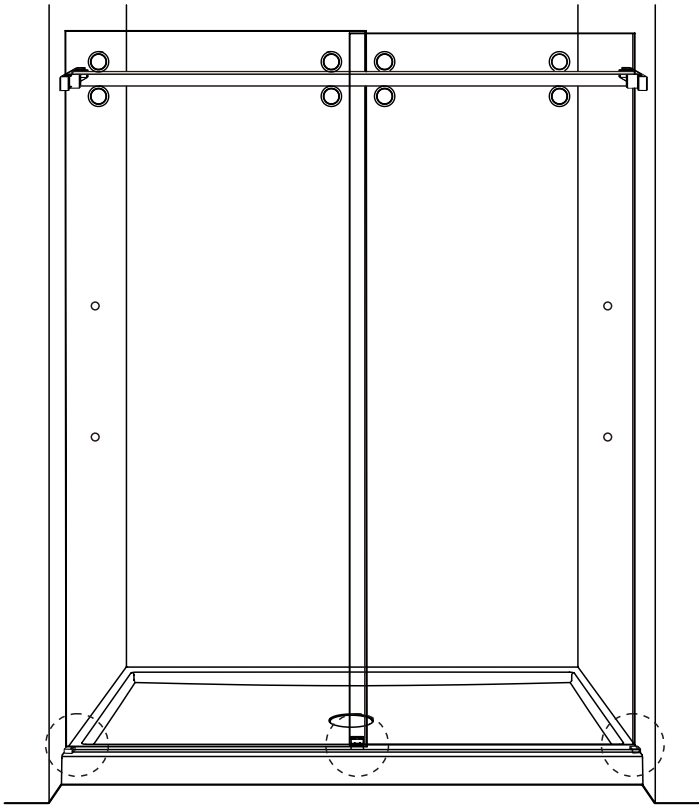
STEP 13 – INSTALL BOTTOM ROLLERS.

INSTALL BOTTOM ROLLERS (DIAGRAM A). ADJUST BOTTOM ROLLER TO TOUCH BOTTOM OF TRACK BY ROTATING ROLLER AS SHOWN (DIAGRAM B AND C). ONCE ALIGNED TIGHTEN ROLLER SCREW AND INSTALL ROLLER CAP (DIAGRAM D AND E).

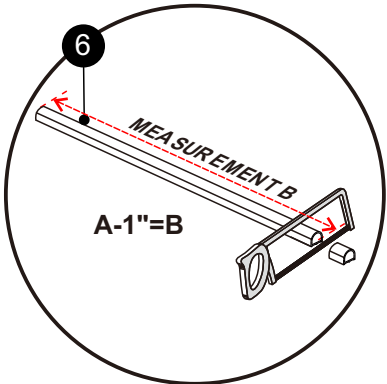


STEP 14 – FIT BOTTOM ALUMINUM WATER GUARD.

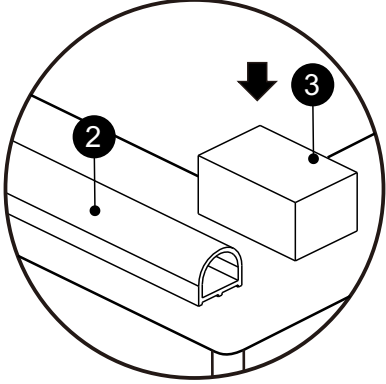
MEASURE OPENING BETWEEN BOTH WALLS (DIAGRAM A). NEXT, CUT BOTTOM WATER GUARD BASED OFF MEASUREMENT "B". OBTAIN MEASUREMENT "B" BY TAKING YOUR MEASUREMENT "A" AND SUBTRACT 1" (DIAGRAM B). PLACE BOTTOM WATER GUARD AND CORNER BLOCKS ON CURB (DIAGRAM C). ENSURE BOTTOM WATER GUARD IS PLACED AGAINST GUIDE (DIAGRAM D). ENSURE MEASUREMENT AT BOTH POINTS ARE THE SAME (DIAGRAM E). MARK LOCATION OF BOTTOM WATER GUARD (DIAGRAM F).



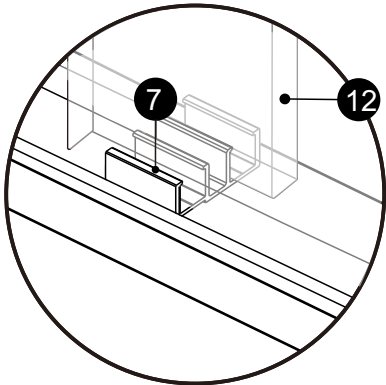
A



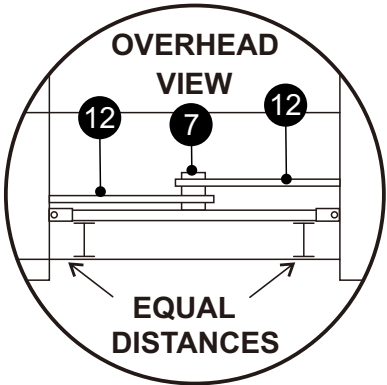
B



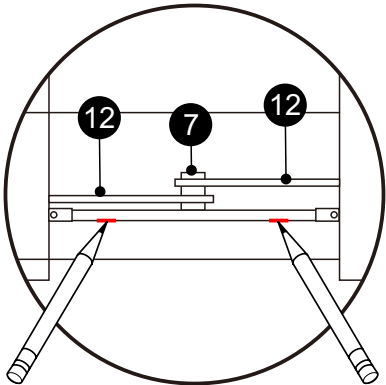
C



D



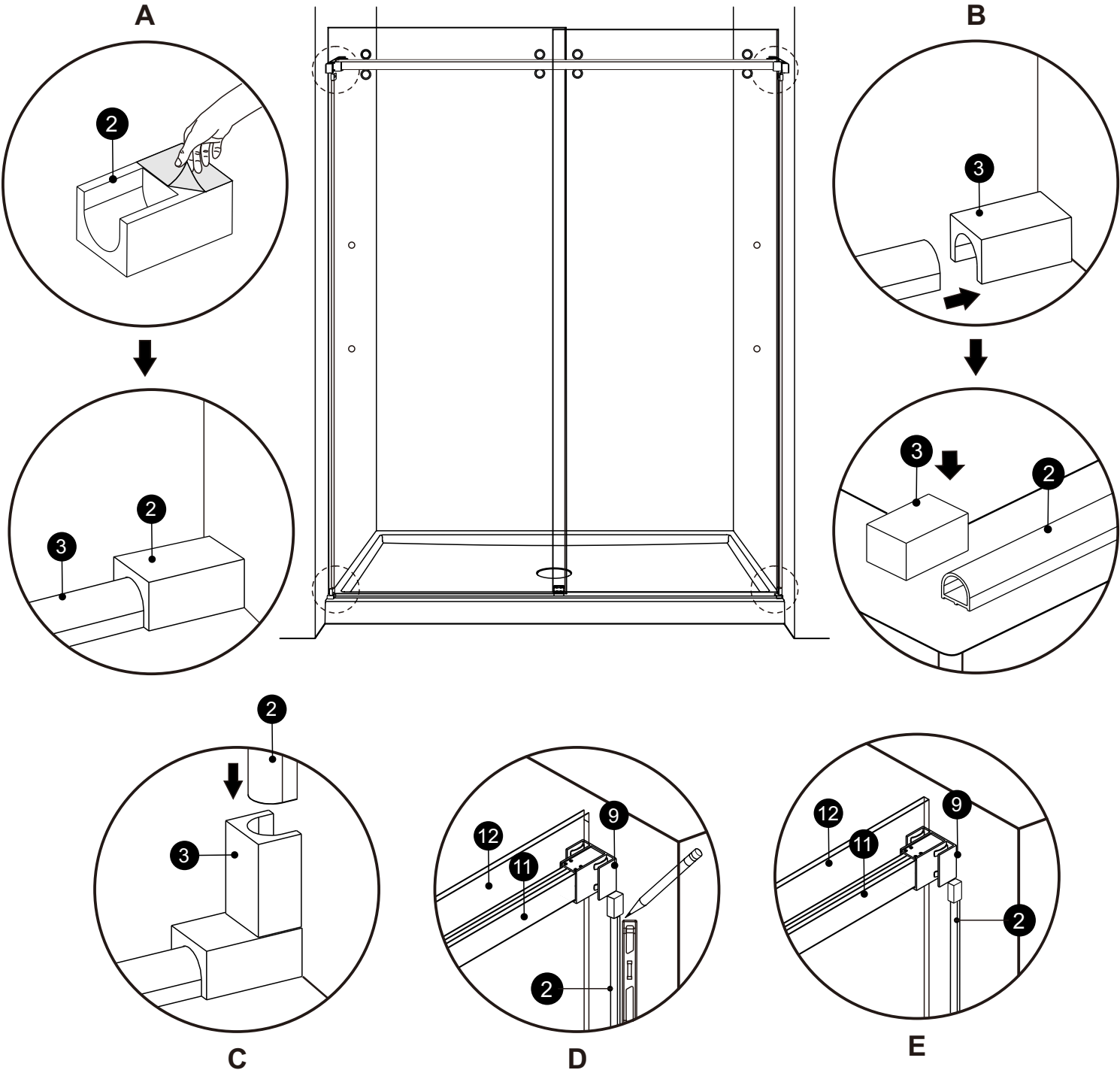
E



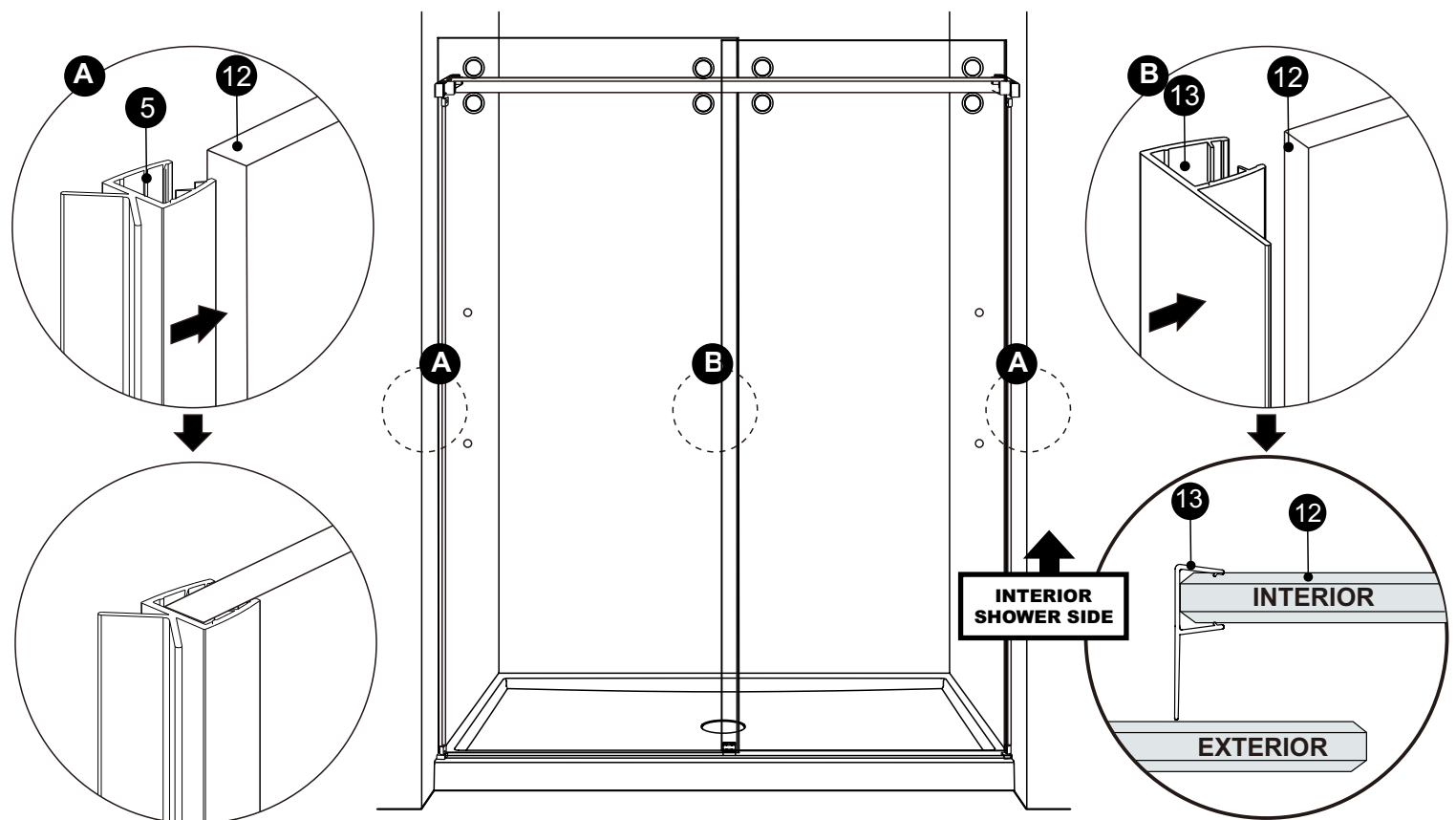
F

STEP 15 – INSTALL ALUMINUM WATER GUARD SET.

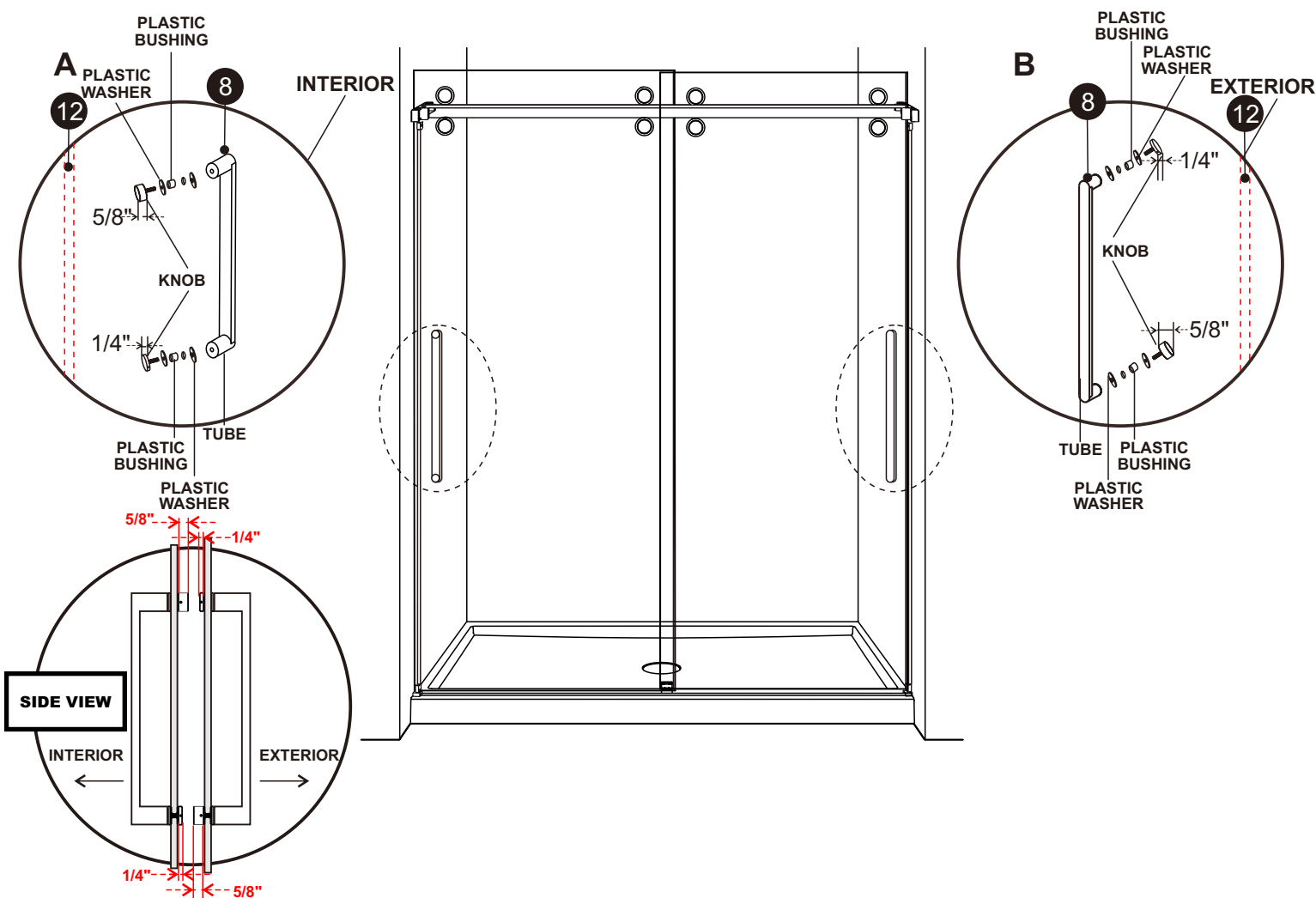
REMOVE ONLY ONE CORNER BLOCK, PEEL OFF BACK OF STICKY TAB AND STICK ON CURB (DIAGRAM A). REMOVE BOTTOM WATER GUARD AND OTHER CORNER BLOCK, PEEL OFF BACK OF STICKY TABS, AND REINSTALL USING PENCIL MARKS AS A GUIDE (DIAGRAM B). INSTALL LOWER BLOCK ON VERTICAL WALL AS SHOWN (DIAGRAM C). INSERT SIDE WALL WATER GUARD INTO BOTTOM BLOCK, DO NOT REMOVE STICKY TAB BACKING AT THIS TIME. PLUMB AND MARK TOP WITH PENCIL (DIAGRAM D), NOW REMOVE STICKY TAB BACKING AND INSTALL GUARD AND TOP BLOCK (DIAGRAM E). REPEATS DIAGRAMS C, D AND E FOR OPPOSITE WALL.



STEP 16 – INSTALL SEALS.

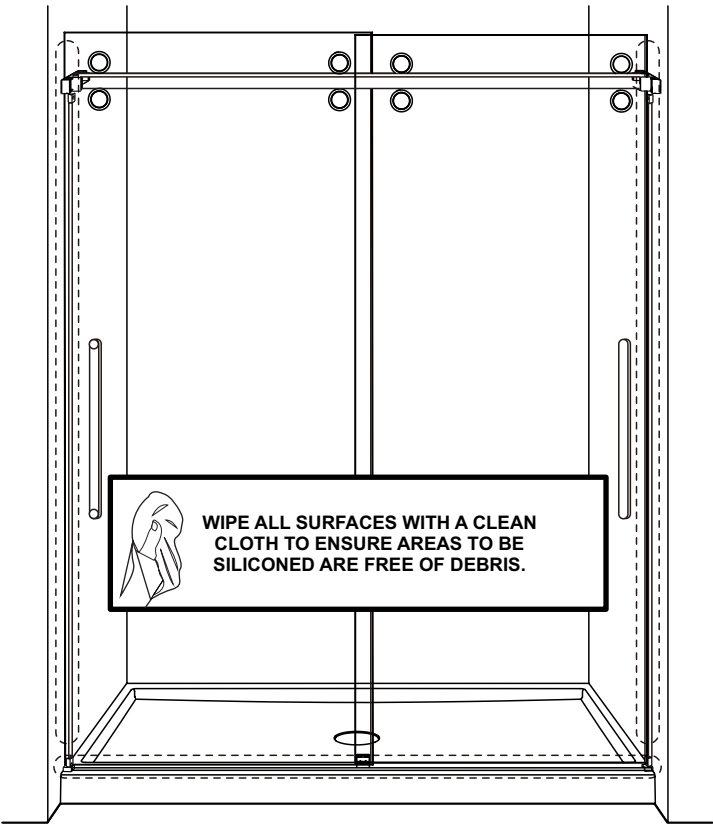


STEP 17 – INSTALL HANDLES.

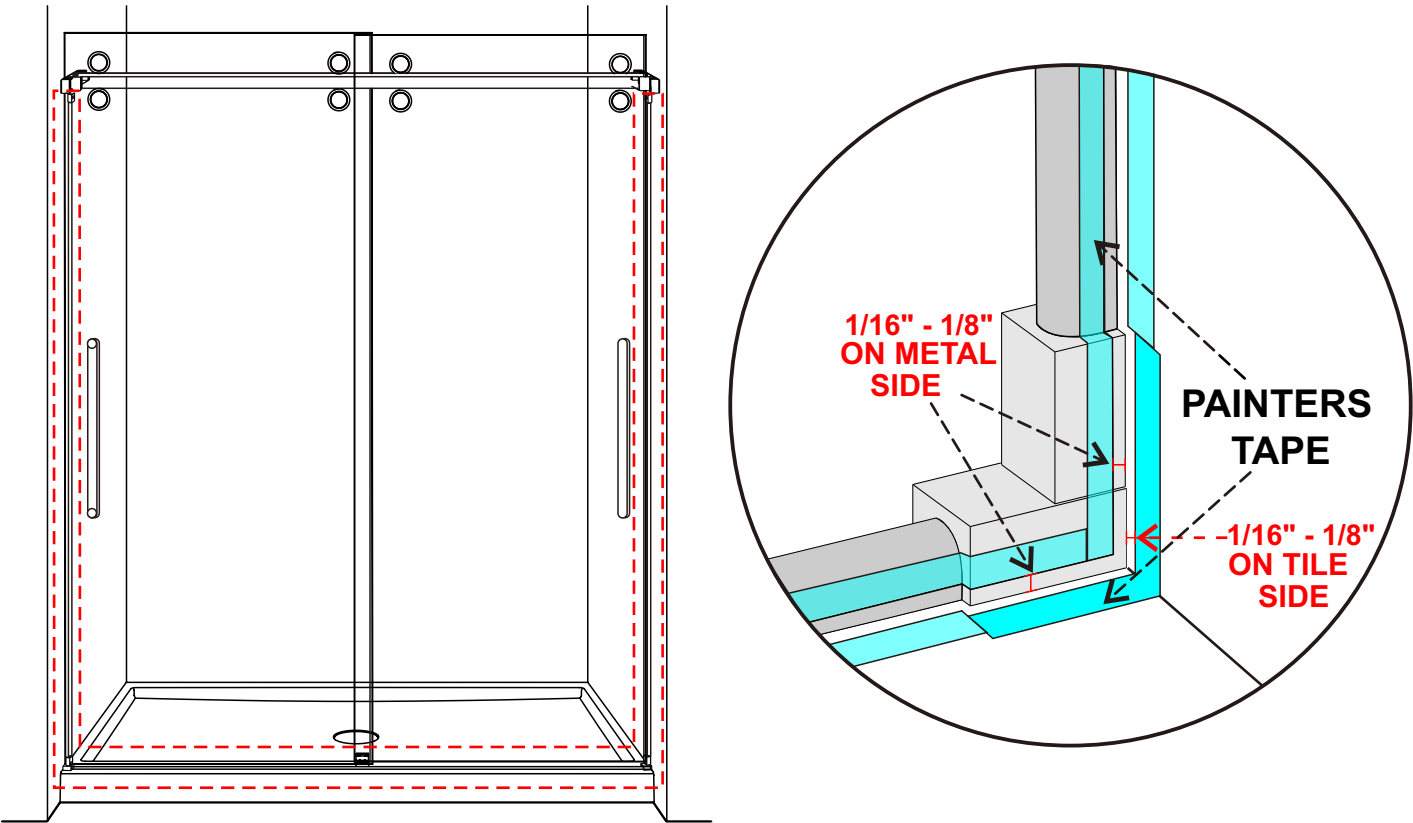


STEP 18- APPLYING SILICONE.

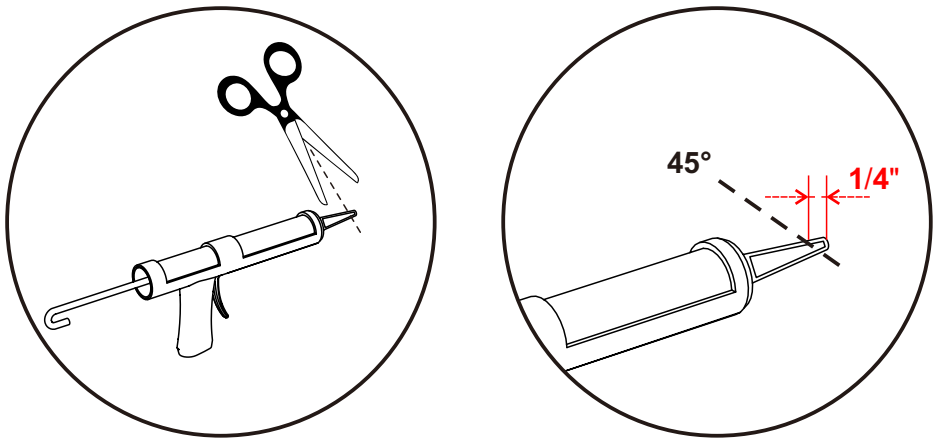
A: WIPE DOWN AREAS SHOWN WITH CLEAN CLOTH AND DENATURED OR ISOPROPYL ALCOHOL(INTERIOR AND EXTERIOR).



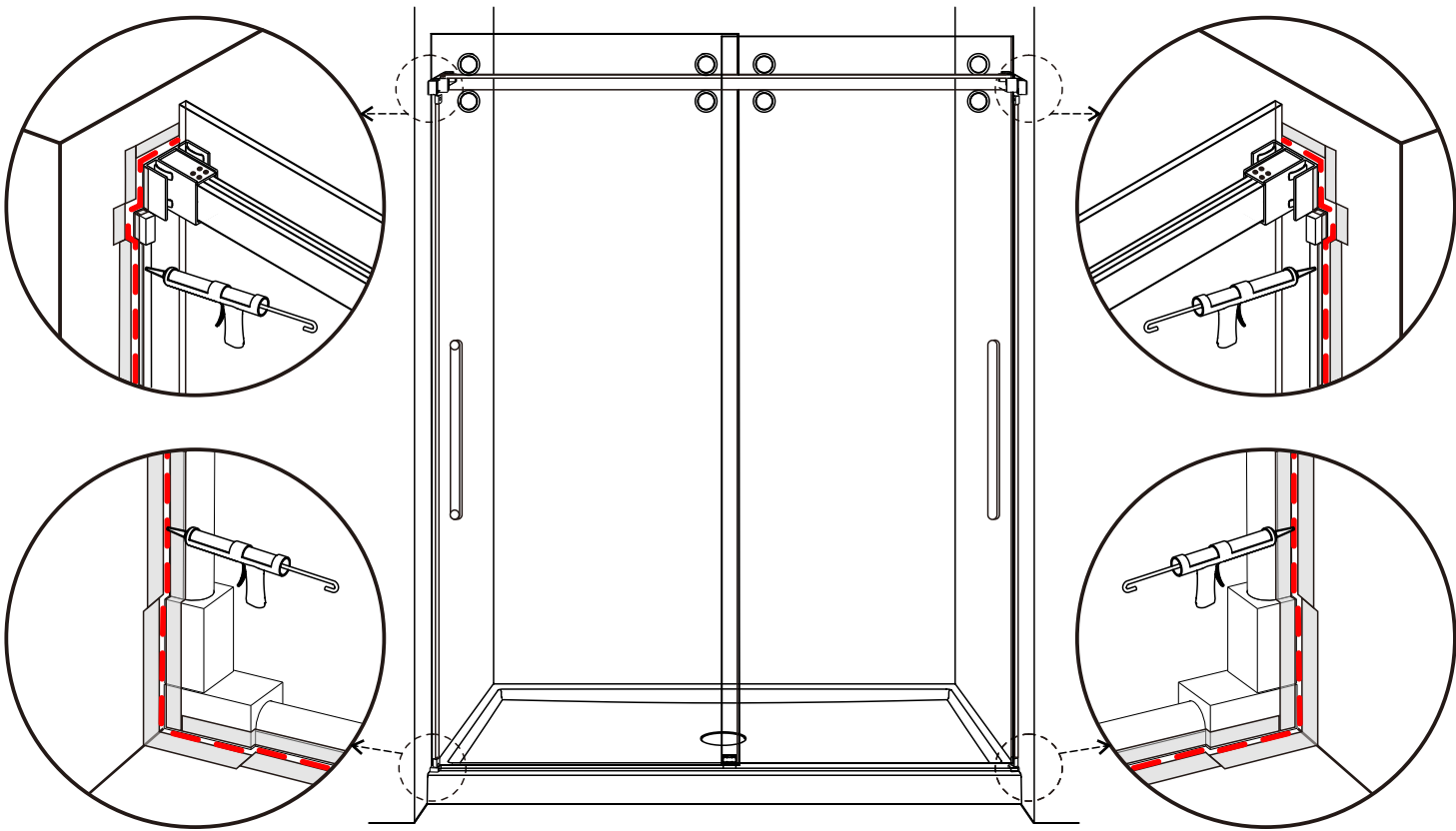
B:TAPE OFF AREAS SHOWN WITH PAINTERS TAPE(INTERIOR AND EXTERIOR).



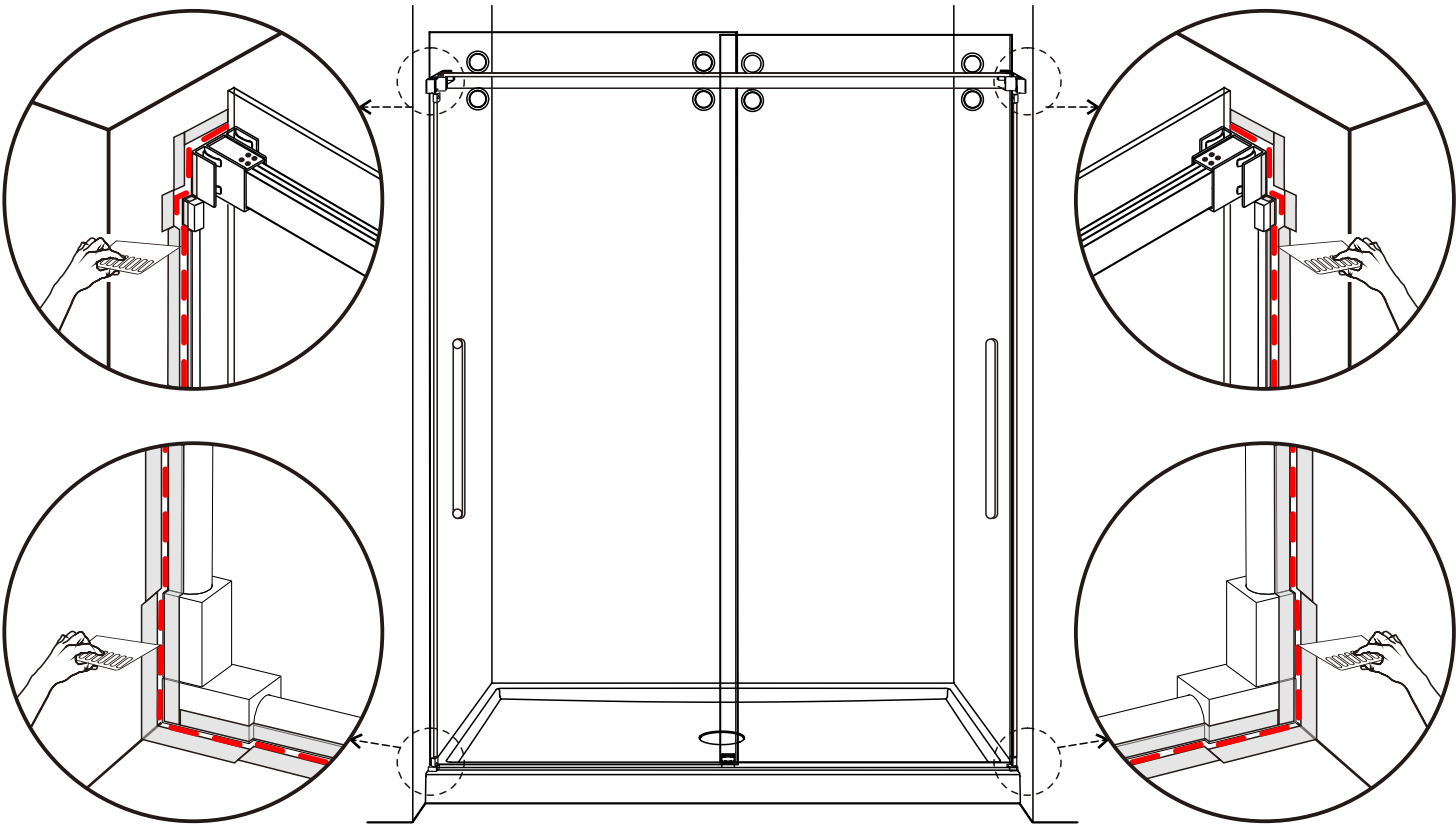
C: CUT OFF TIP OF CAULKING TUBE AT AN ANGLE.



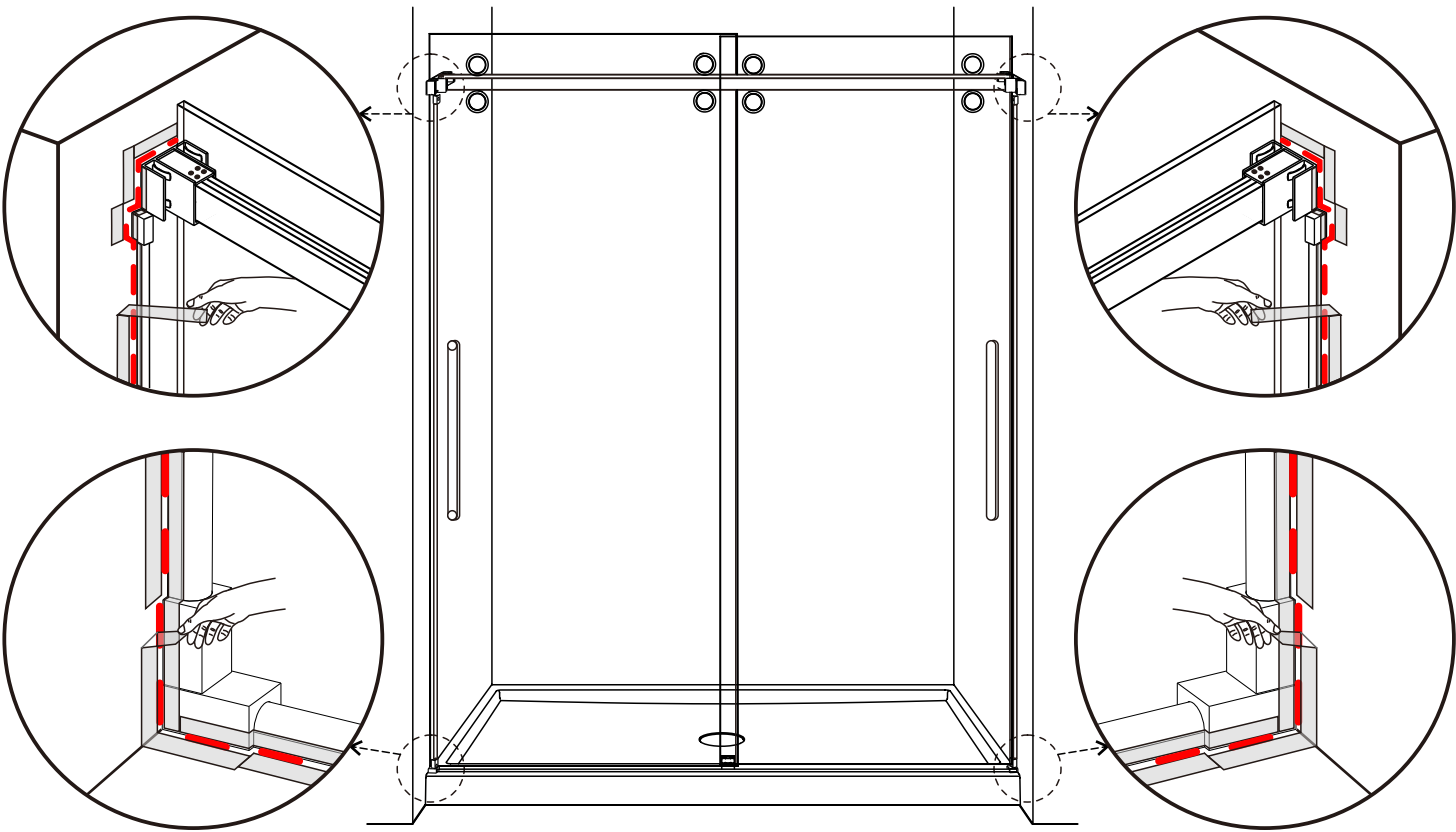
D: APPLY CAULKING AS SHOWN. ENSURE CAULKING IS ADDED TO AREAS REPRESENTED BY THE DOTTED LINE.



**E:TOOL WITH PROVIDED SEALING FINISHING TOOL (INTERIOR AND EXTERIOR).
USE PROVIDED SEALANT FINISHING TOOL TO SMOOTH OUT AND REMOVE
EXCESS SILICONE.**



F:REMOVE TAPE (INTERIOR AND EXTERIOR) .



G:LET CAULKING CURE FOR 48 HOURS BEFORE USE.

