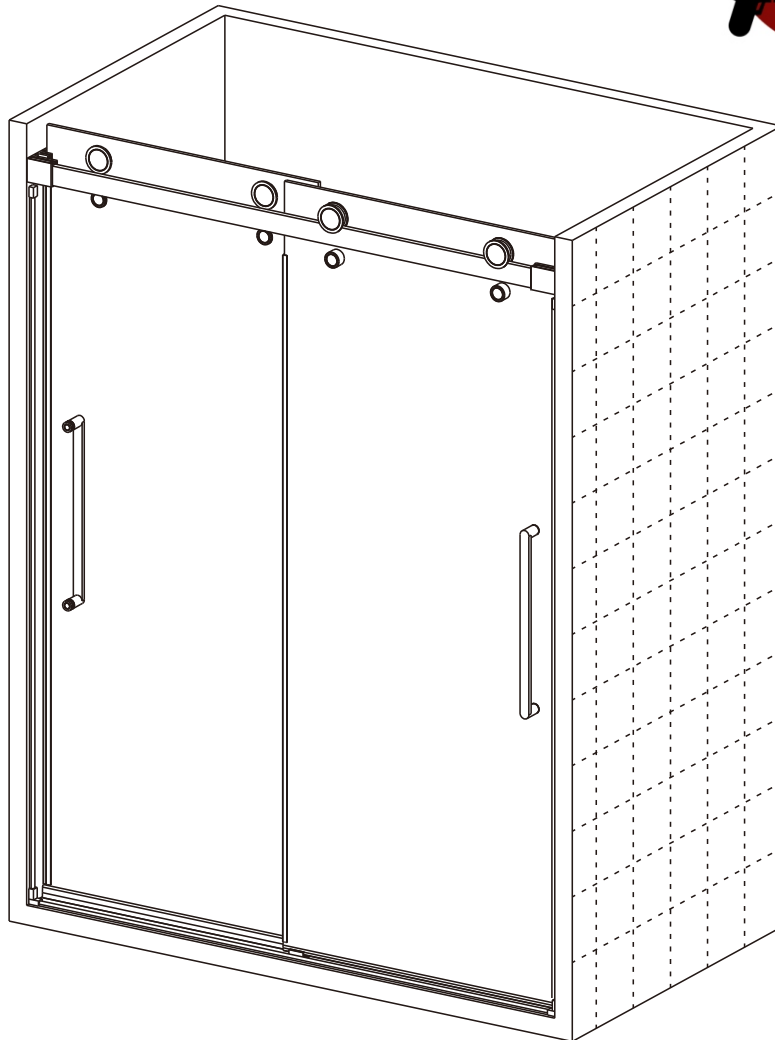


# Eurotech SHOWERS

## INSTALLATION INSTRUCTIONS

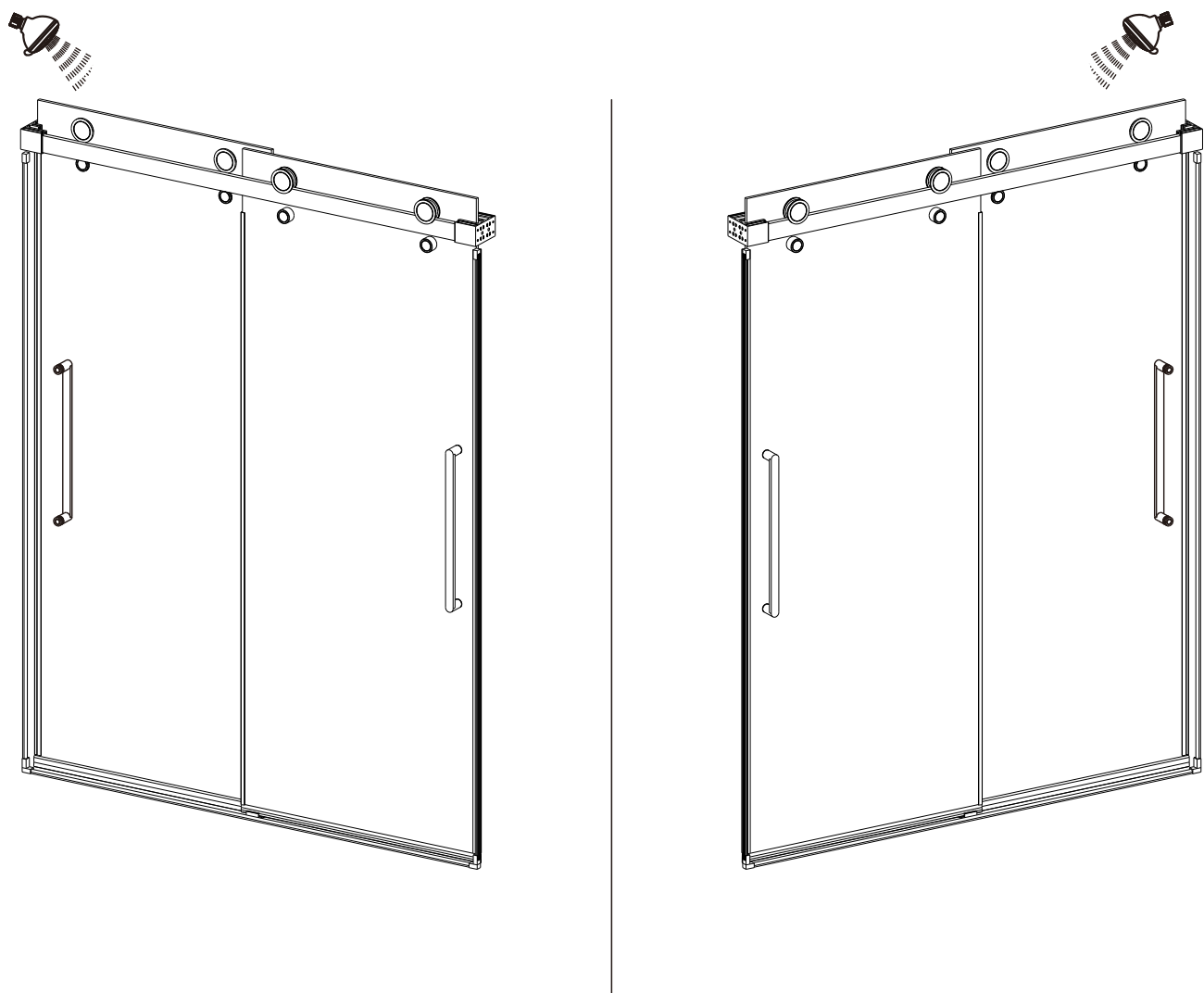


### WINDSOR



**THIS SHOWER IS PRE-CUT TO FIT A 56 1/2" TO 59"WIDE OPENING.  
DANGER: IF THIS SHOWER IS INSTALLED IN AN OPENING  
OVER 59" THIS COULD RESULT IN SERIOUS INJURY.**

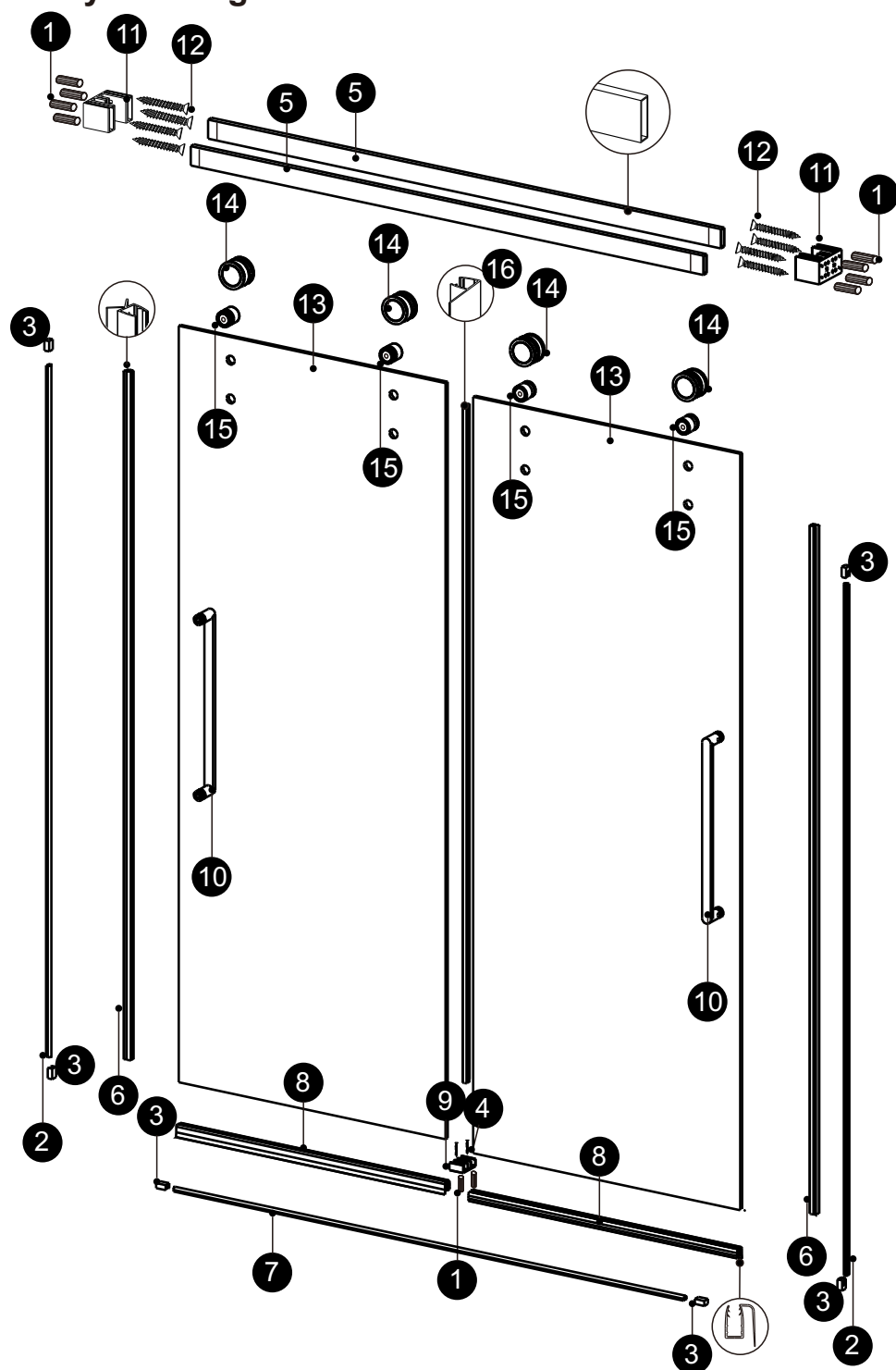
## CONFIGURATIONS



**\*THIS CONFIGURATION IS ILLUSTRATED  
IN THIS MANUAL**

**NOTE: THE WINDSOR ENCLOSURE IS REVERSIBLE FOR LEFT OR  
RIGHT SIDE SHOWER HEAD CONFIGURATIONS. THIS MANUAL  
WILL SHOW THE LEFT SIDE SHOWER HEAD INSTALLATION. FOR  
RIGHT SIDE SHOWER HEAD INSTALLATION, SIMPLY BEGIN ON THE  
OPPOSITE WALL AND REVERSE THE ORIENTATION OF THE PARTS  
AS NECESSARY.**

◆ Assembly Drawing



PACKING LIST

PART #	DESCRIPTION	Q'TY	PART #	DESCRIPTION	Q'TY
1	Wall Plugs-A	10pcs	10	Handle	2pcs
2	Aluminium Water Guard-A	2pcs	11	Wall Brackets	2pcs
3	End Block	6pcs	12	Screws ST5x2"	8pcs
4	Screws ST4x1 3/8"	2pcs	13	Door Panels	2pcs
5	Tracks	2pcs	14	Rollers	4pcs
6	Gasket-A	2pcs	15	Anti-Lift Pins	4pcs
7	Aluminium Water Guard-B	1pc	16	Gasket-C	1pc
8	Gasket-B	2pcs	17	Installer Kit	1set
9	Bottom Guide	1pc			

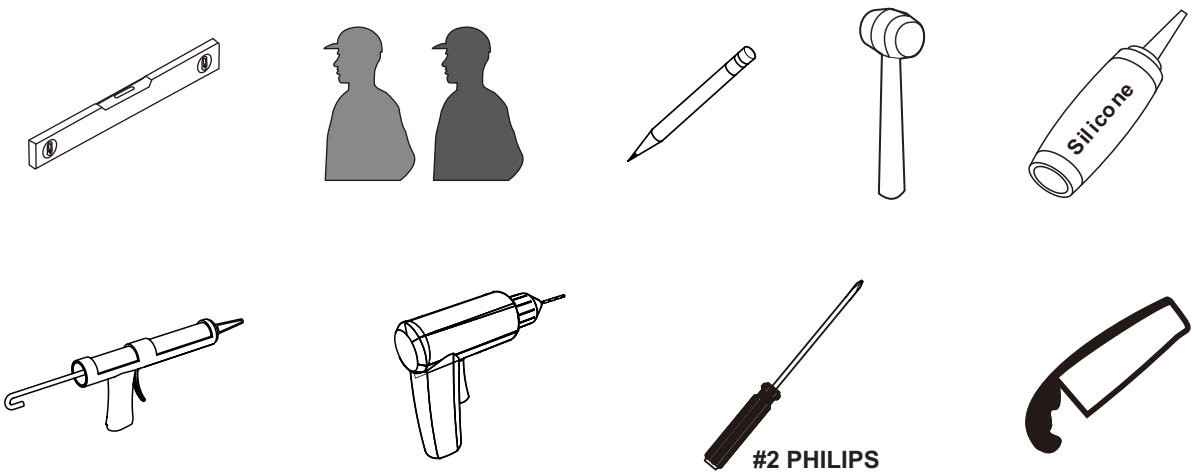
◆ **General Information**

Inspect the product immediately upon receipt for transit damage, missing packs/parts or manufacturing defects.

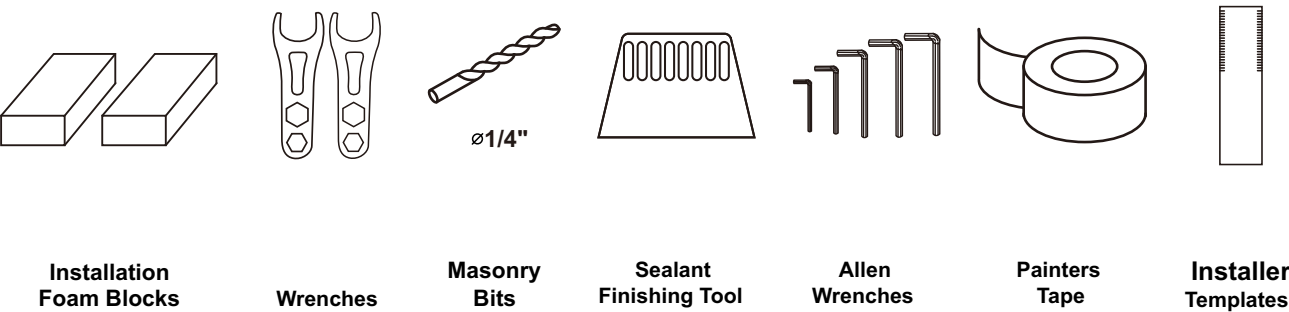
Handle the product with care - Do not set on hard surface and protect all edges and corners from impact. Tempered glass is up to 4 times stronger than annealed glass but edges and corners can be very fragile.

Notes: Read these instructions carefully before start of installation.  
Special care should be taken when drilling walls to avoid hidden pipes or electrical cables. This product is heavy and may require two people to install.

**Tools Required**

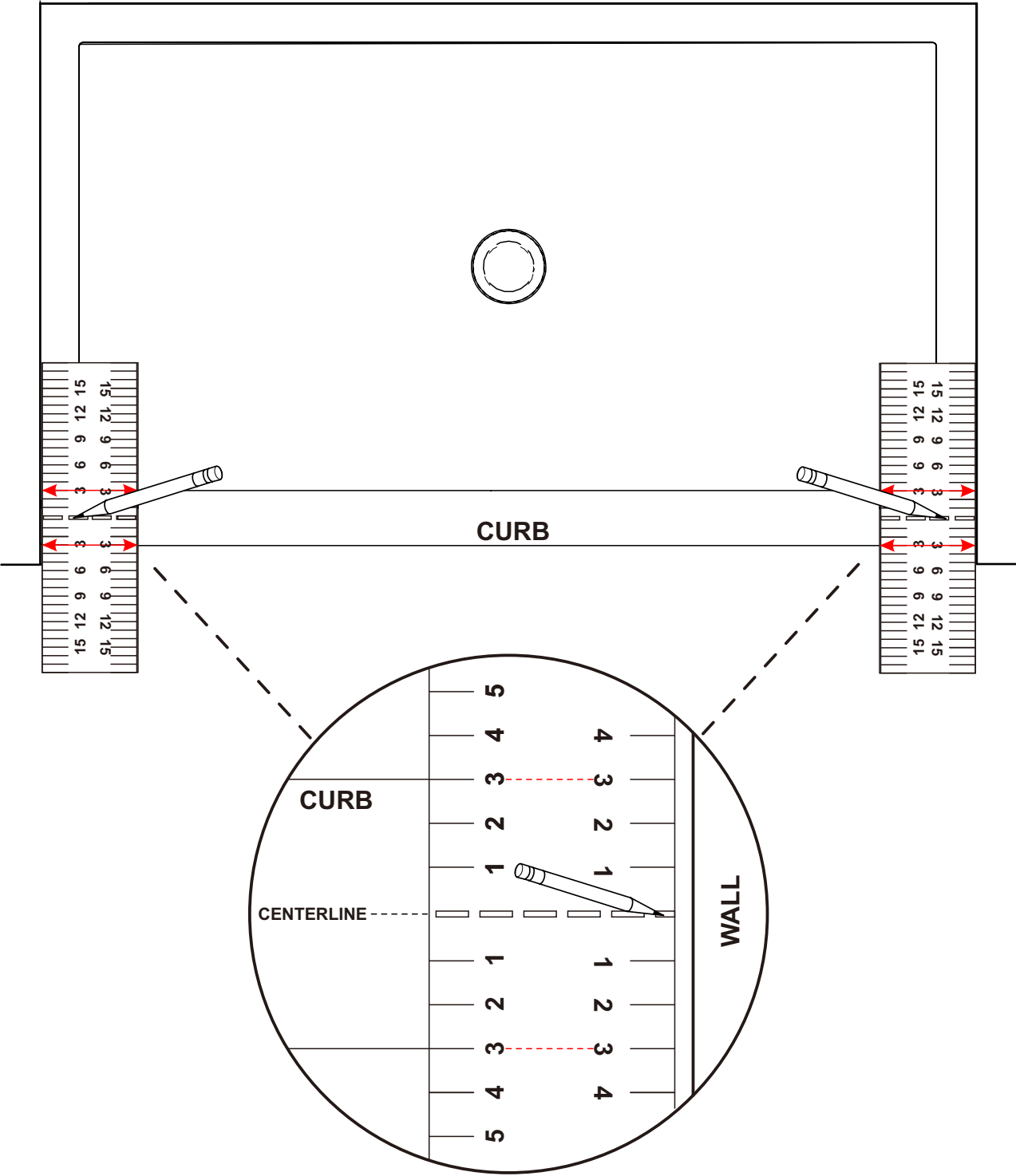


**INSTALLATION KIT 17**



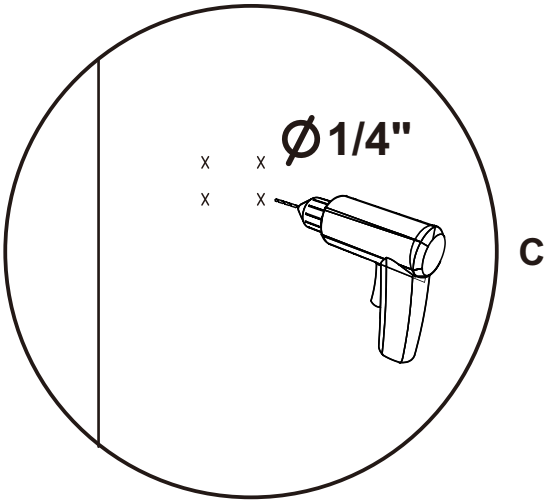
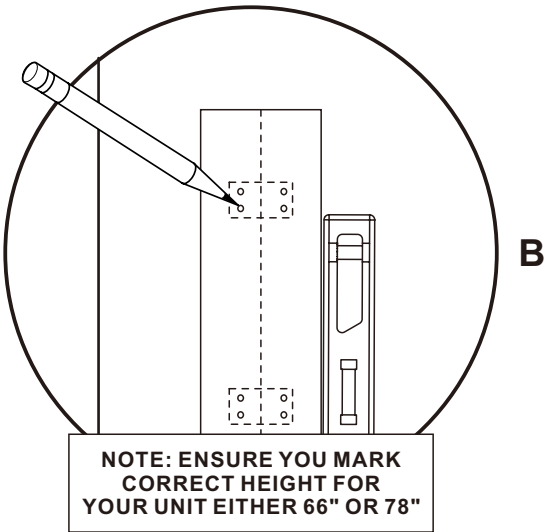
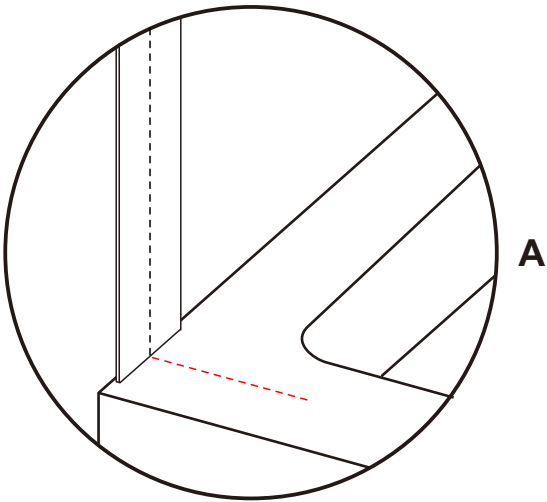
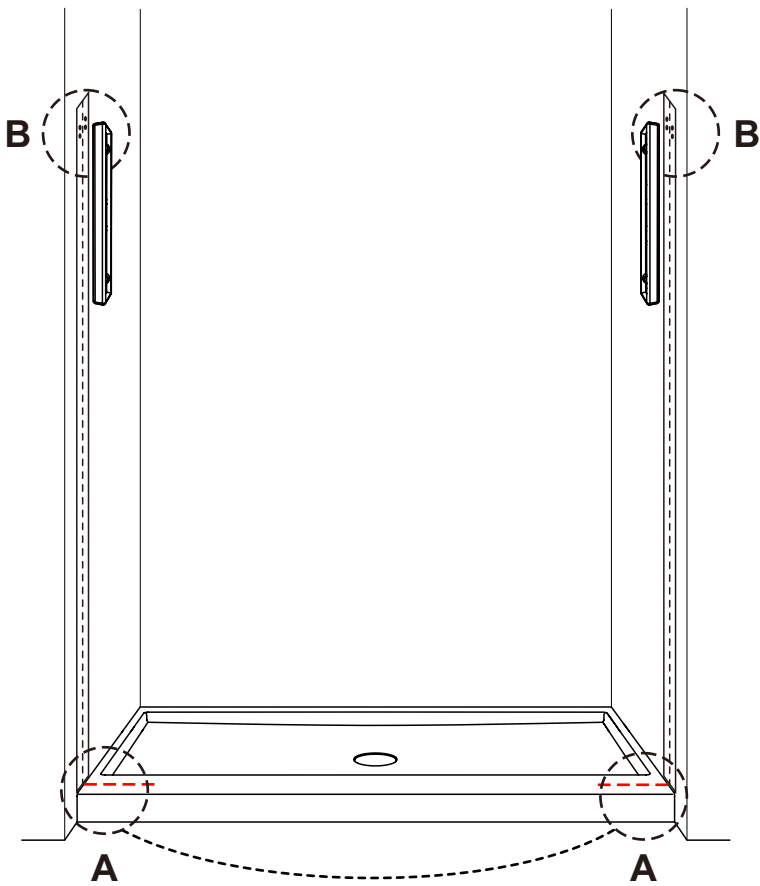
STEP 1 - FINDING CENTERLINE OF CURB.

TO FIND CENTERLINE PLACE TEMPLATE "A" ON CURB AND MATCH NUMBERS ON FRONT AND BACK EDGES OF CURB AND MARK CENTERLINE.



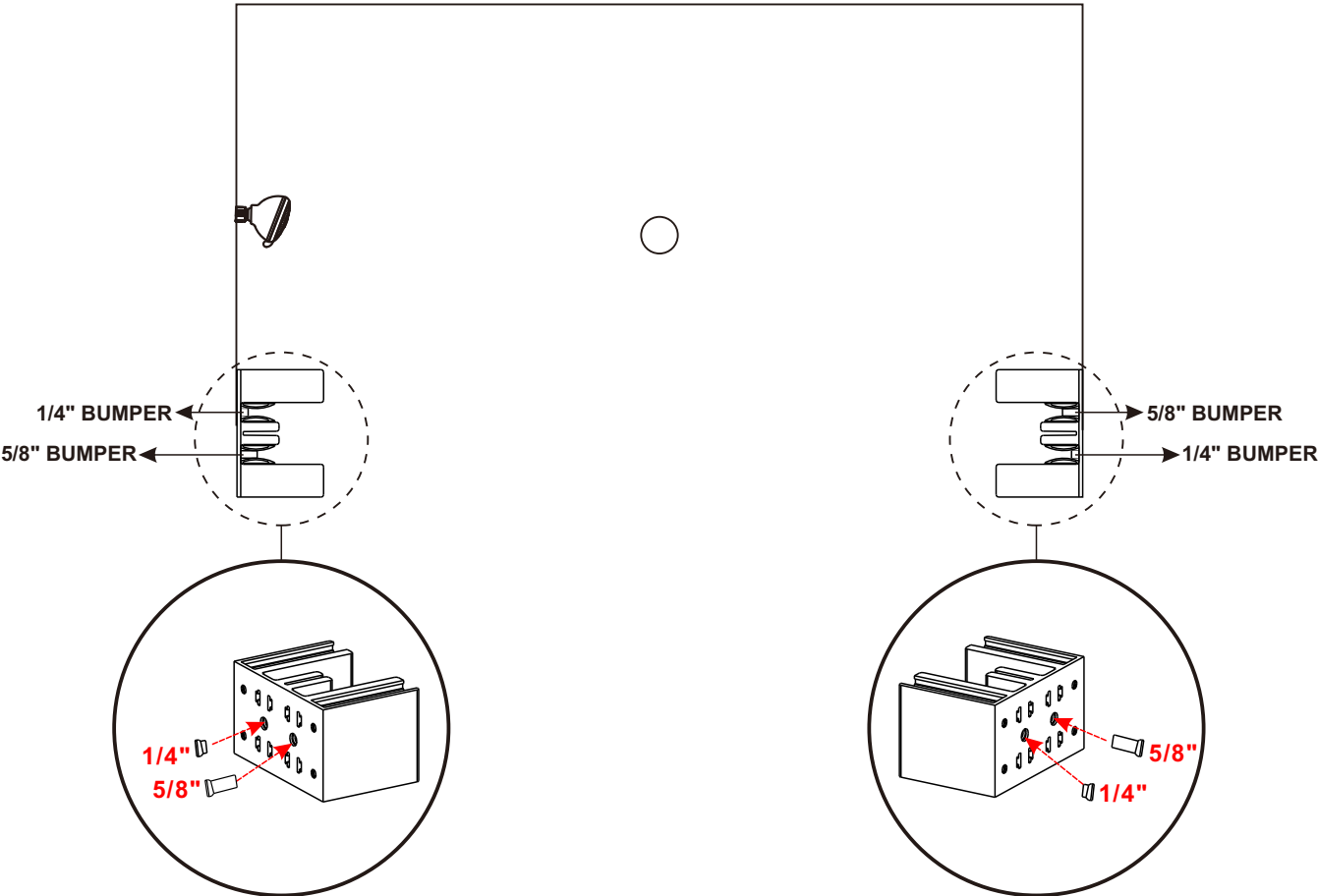
STEP 2 - MARK AND DRILL HOLES FOR WALL BRACKETS.

ENSURE CENTERLINE ON TEMPLATE "B" LINES UP WITH CENTERLINE ON CURB (DIAGRAM A). USE LEVEL TO MAKE SURE TEMPLATE IS PLUMB AND MARK HOLES AND DRILL (DIAGRAM B AND C). REPEAT STEP FOR OPPOSITE WALL.

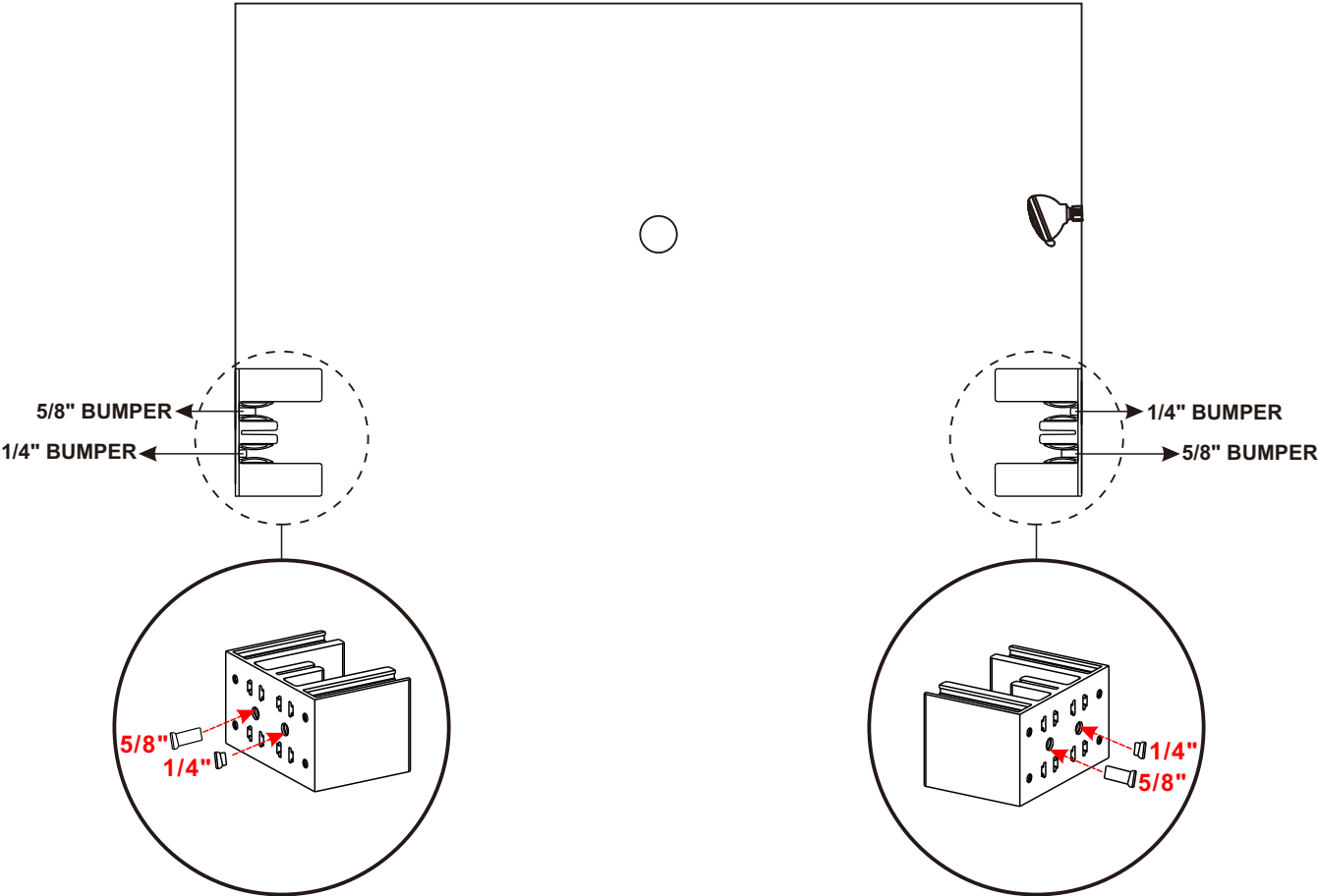


**STEP 3 - INSERT BUMPER BLOCKS INTO WALL BRACKETS.**

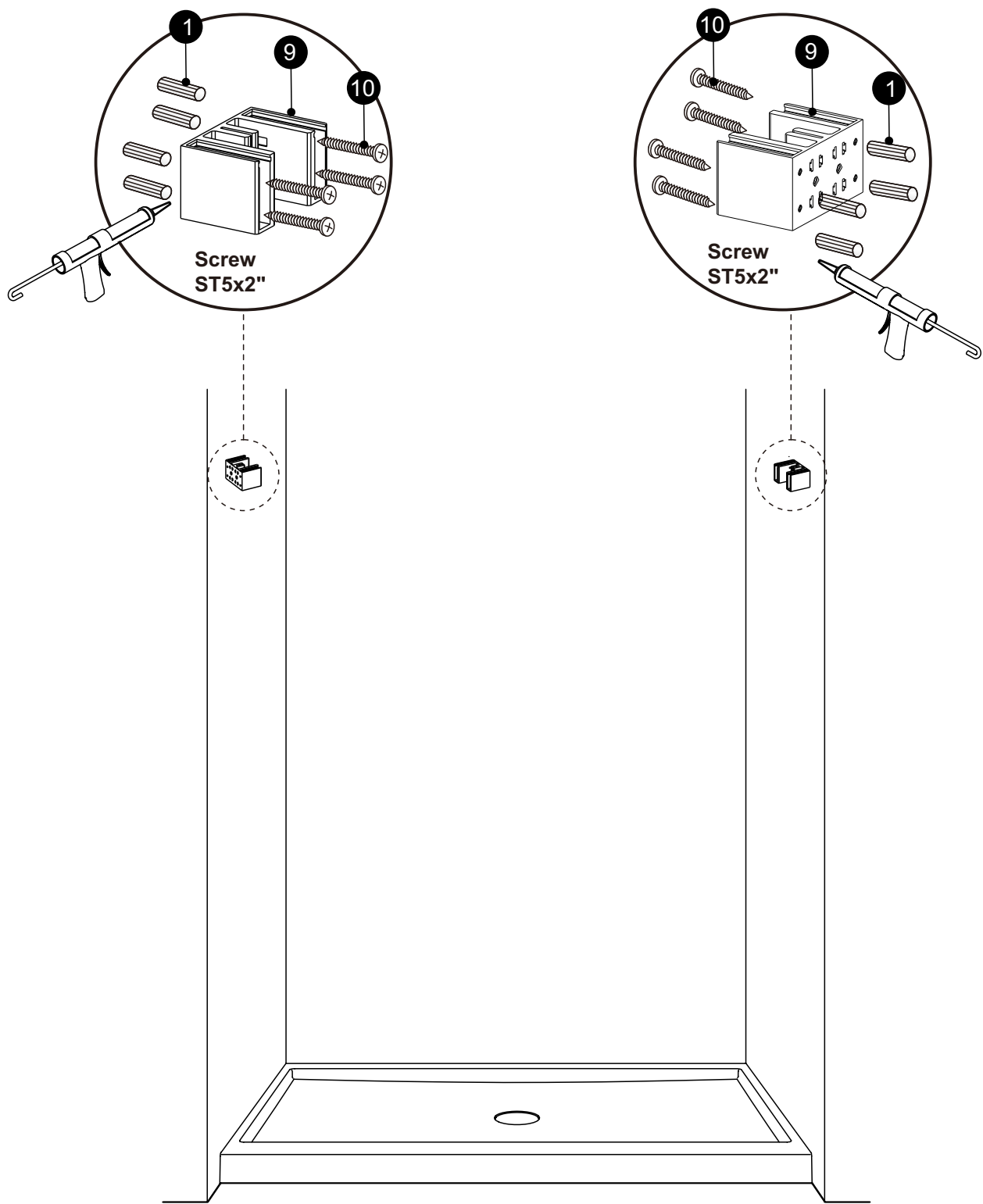
**A: FOR CONFIGURATIONS WITH SHOWER HEAD TO THE LEFT INSERT BUMPER BLOCKS INTO WALL BRACKETS AS SHOWN.**



**B: FOR CONFIGURATIONS WITH SHOWER HEAD TO THE RIGHT INSERT BUMPER BLOCKS INTO WALL BRACKETS AS SHOWN.**



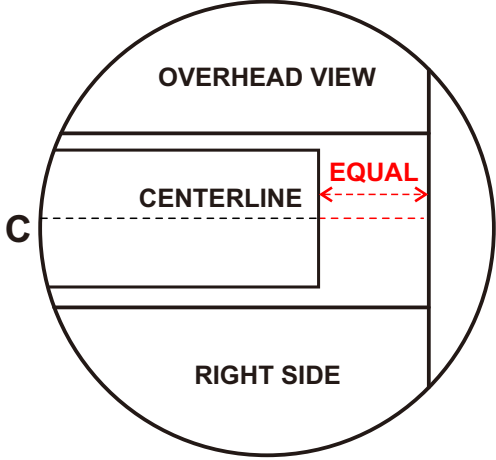
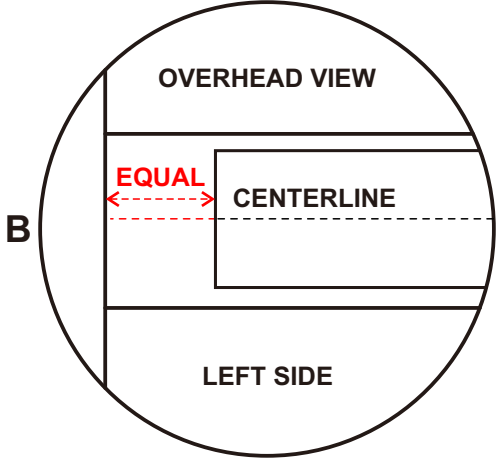
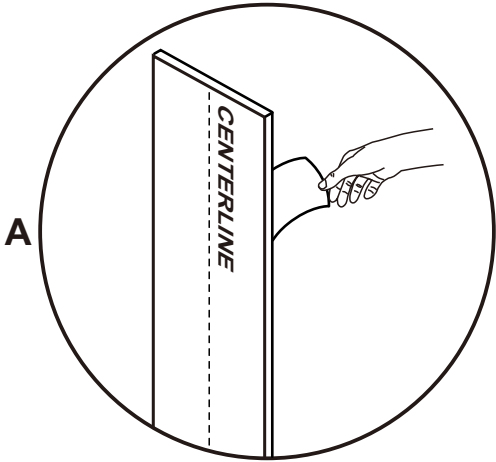
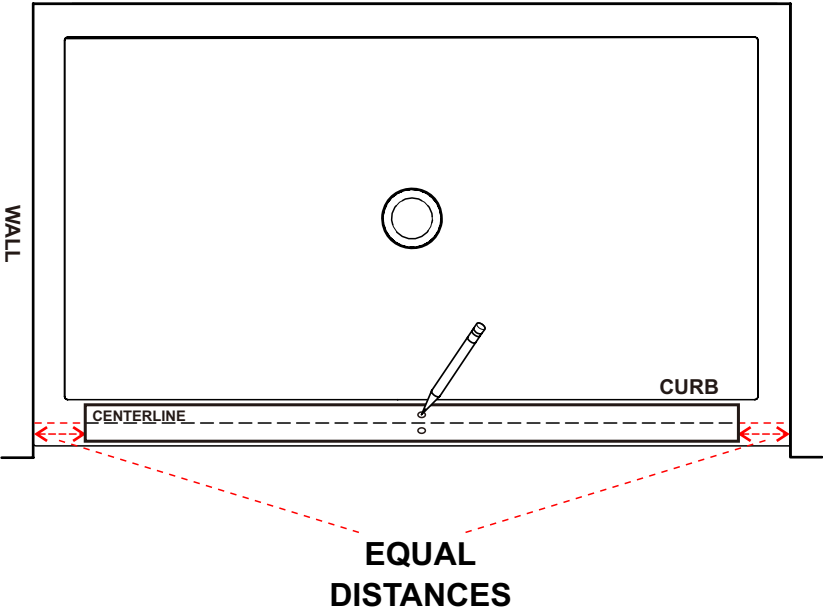
STEP 4 - INSTALL WALL BRACKETS ON LEFT AND RIGHT WALL AS SHOWN.



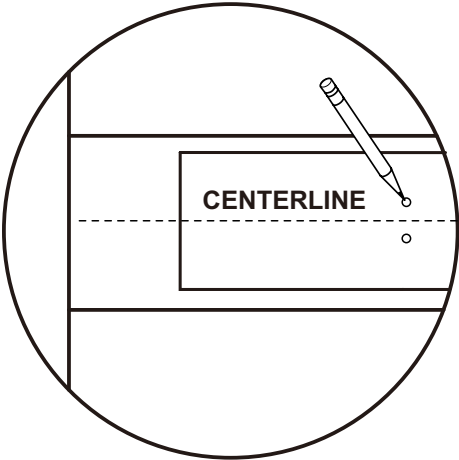


STEP 5 – INSTALLING BOTTOM GUIDE.

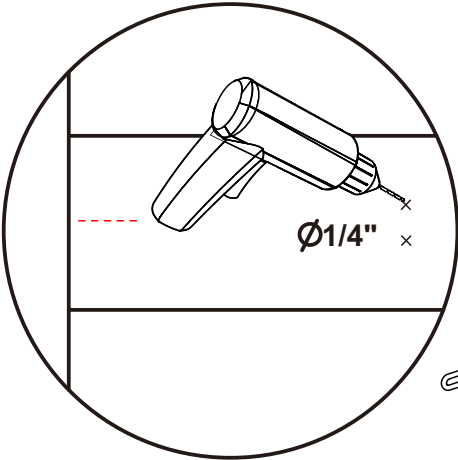
LINE UP CENTERLINE ON TEMPLATE "C" WITH CENTERLINE ON CURB, PEEL OFF TABS AND STICK TEMPLATE ONTO CURB (DIAGRAM A, B AND C).



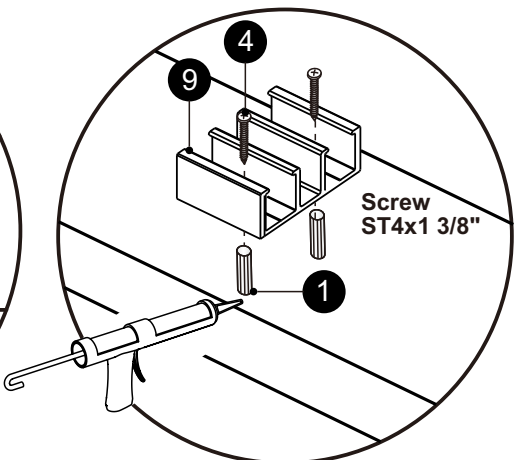
MARK HOLES FOR BOTTOM GUIDE AND DRILL HOLES (DIAGRAM D AND E).  
LASTLY, INSTALL BOTTOM GUIDE (DIAGRAM F).



D



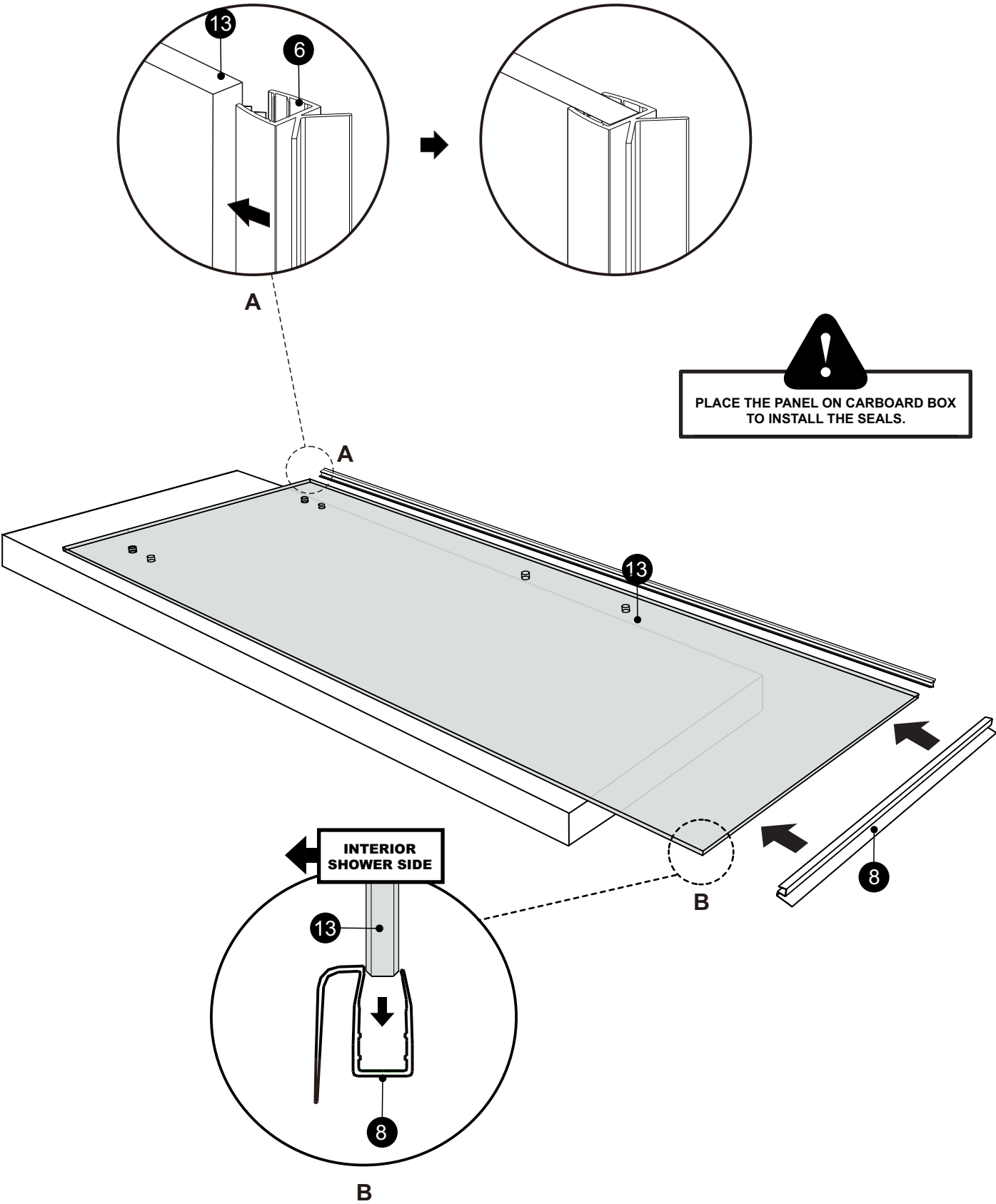
E



F

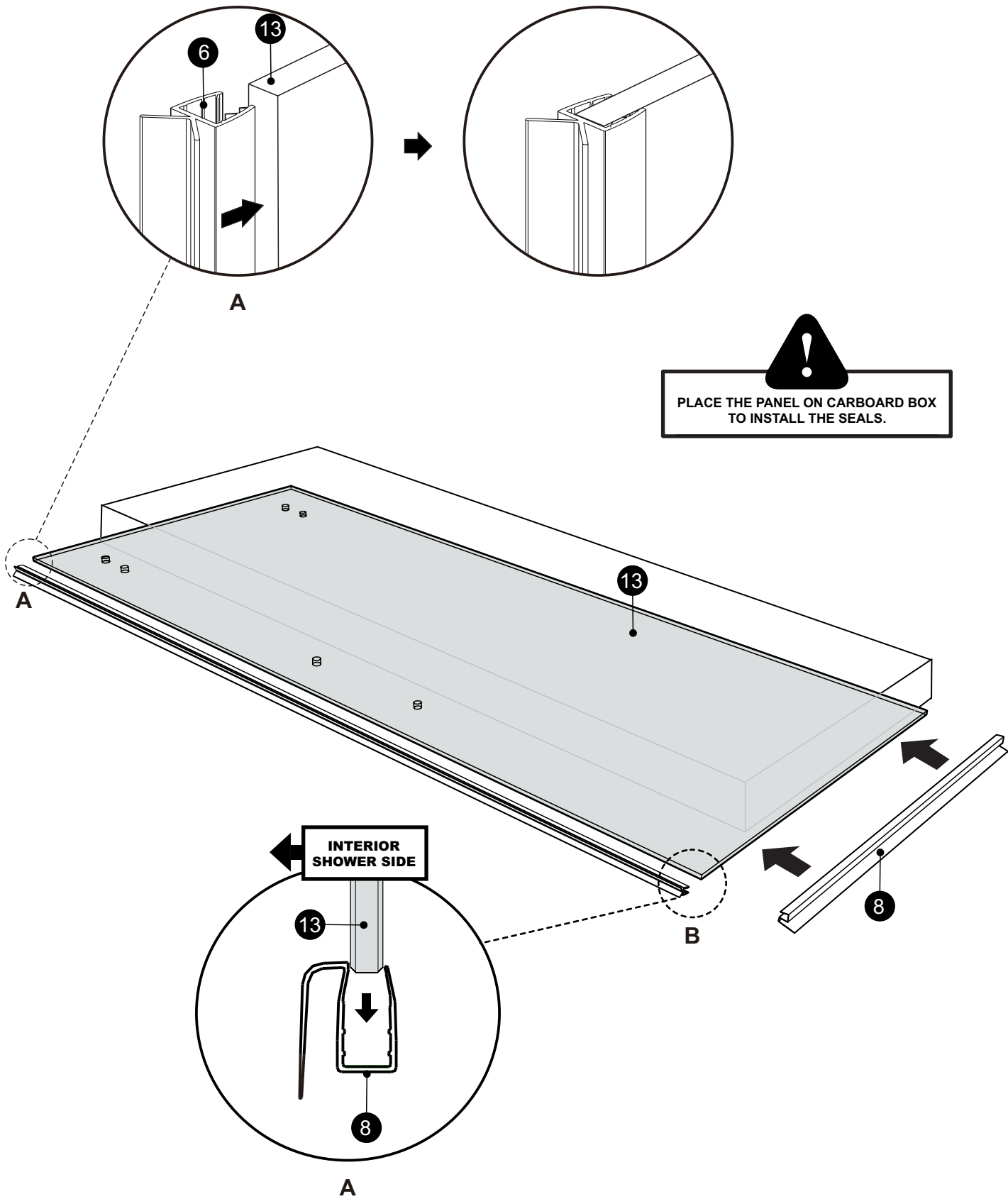
STEP 6A - INSTALL SEALS ON EXTERIOR DOOR.

INSTALL BOTTOM PLASTIC WATER DIVERTER AND V-SEAL ON EXTERIOR DOOR (DIAGRAM A AND B).

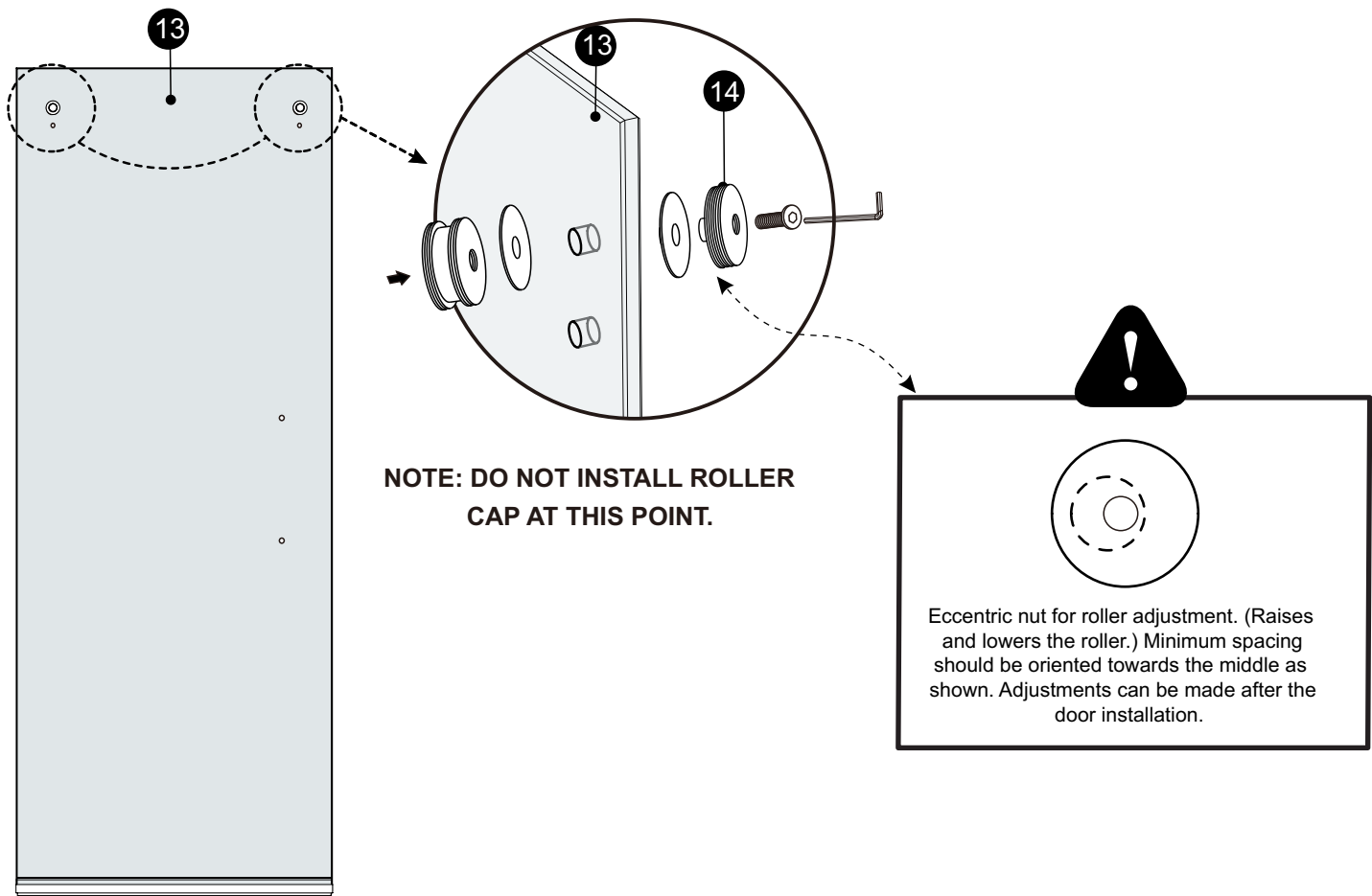


STEP 6B - INSTALL SEALS ON INTERIOR DOOR.

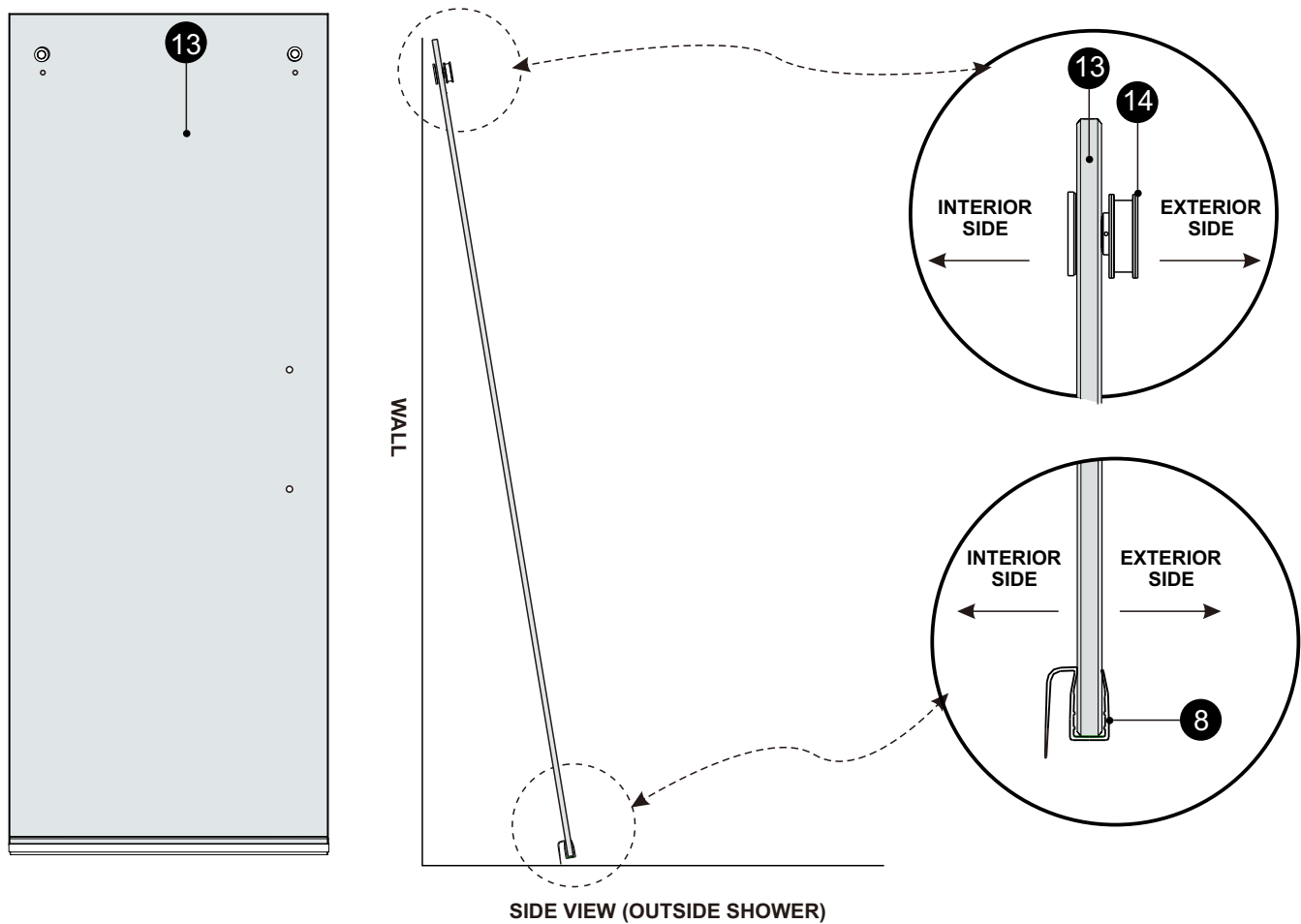
INSTALL BOTTOM PLASTIC WATER DIVERTER AND V-SEAL ON INTERIOR DOOR (DIAGRAM A AND B).



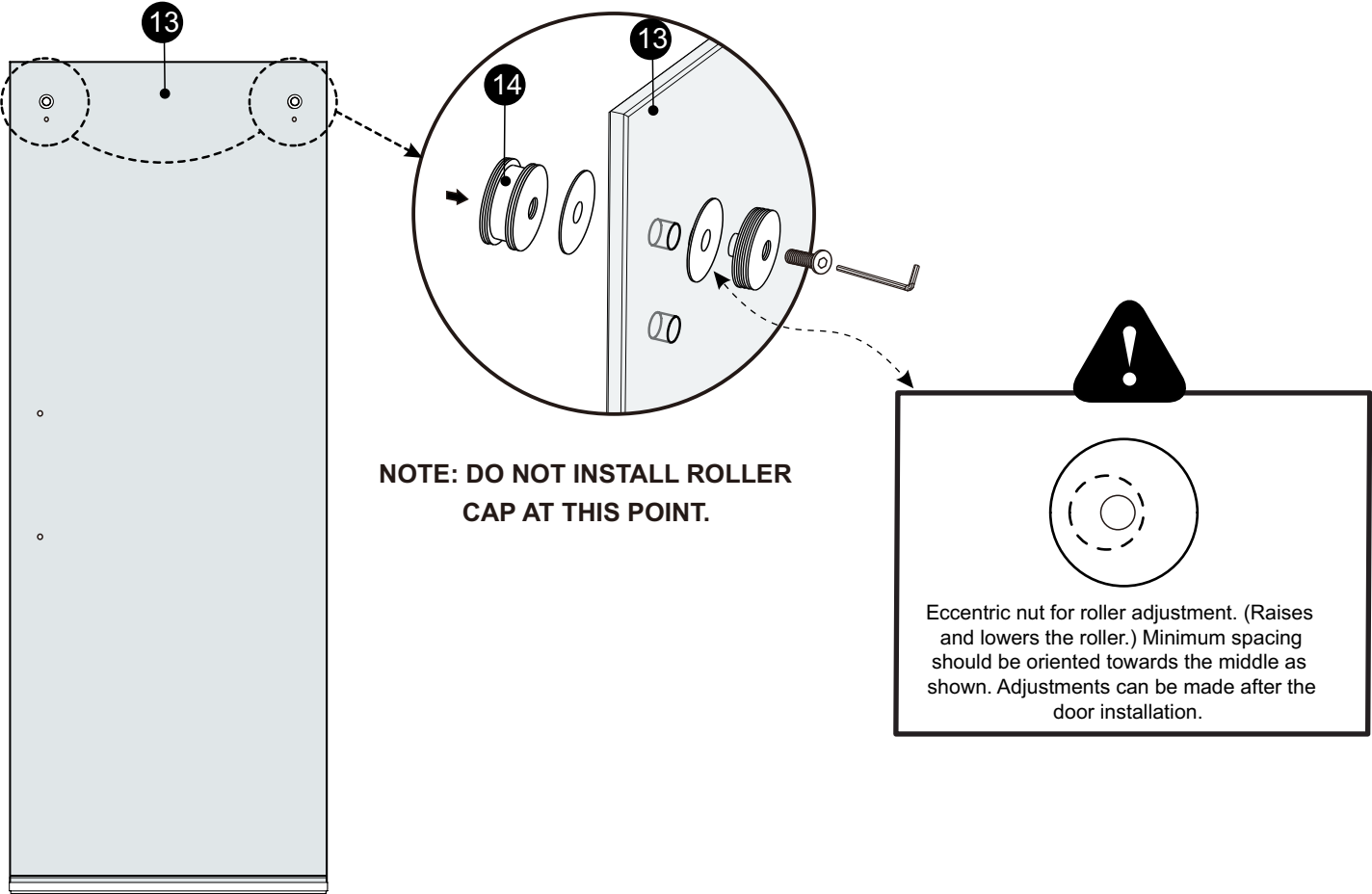
STEP 7 - INSTALLING ROLLERS ON EXTERIOR DOOR.



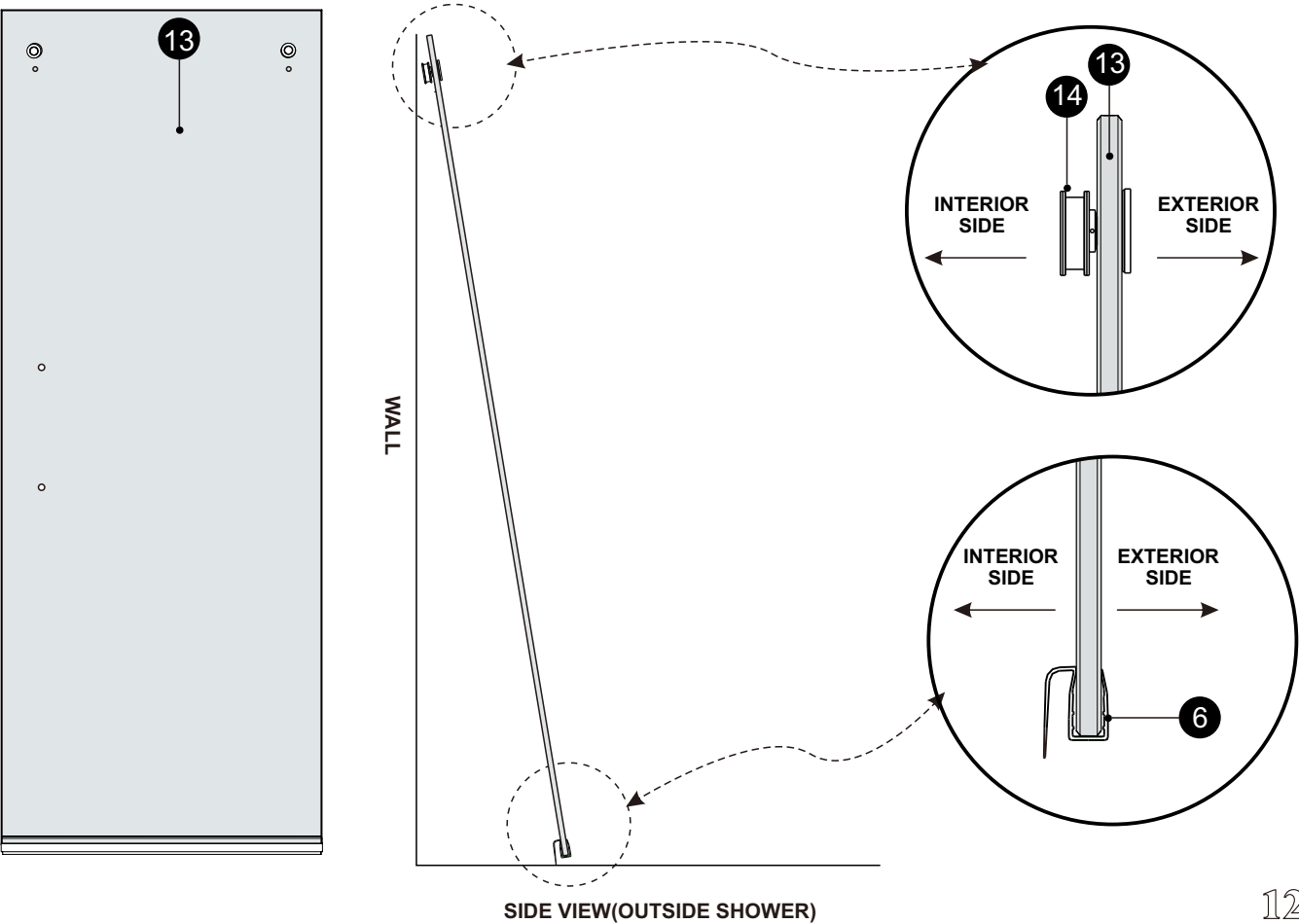
STEP 8 - VERIFY ROLLERS AND PLASTIC WATER DIVERTER ARE INSTALLED PROPERLY AND LEAN DOOR AGAINST WALL OUTSIDE SHOWER .



STEP 9 - INSTALLING ROLLERS ON INTERIOR DOOR.

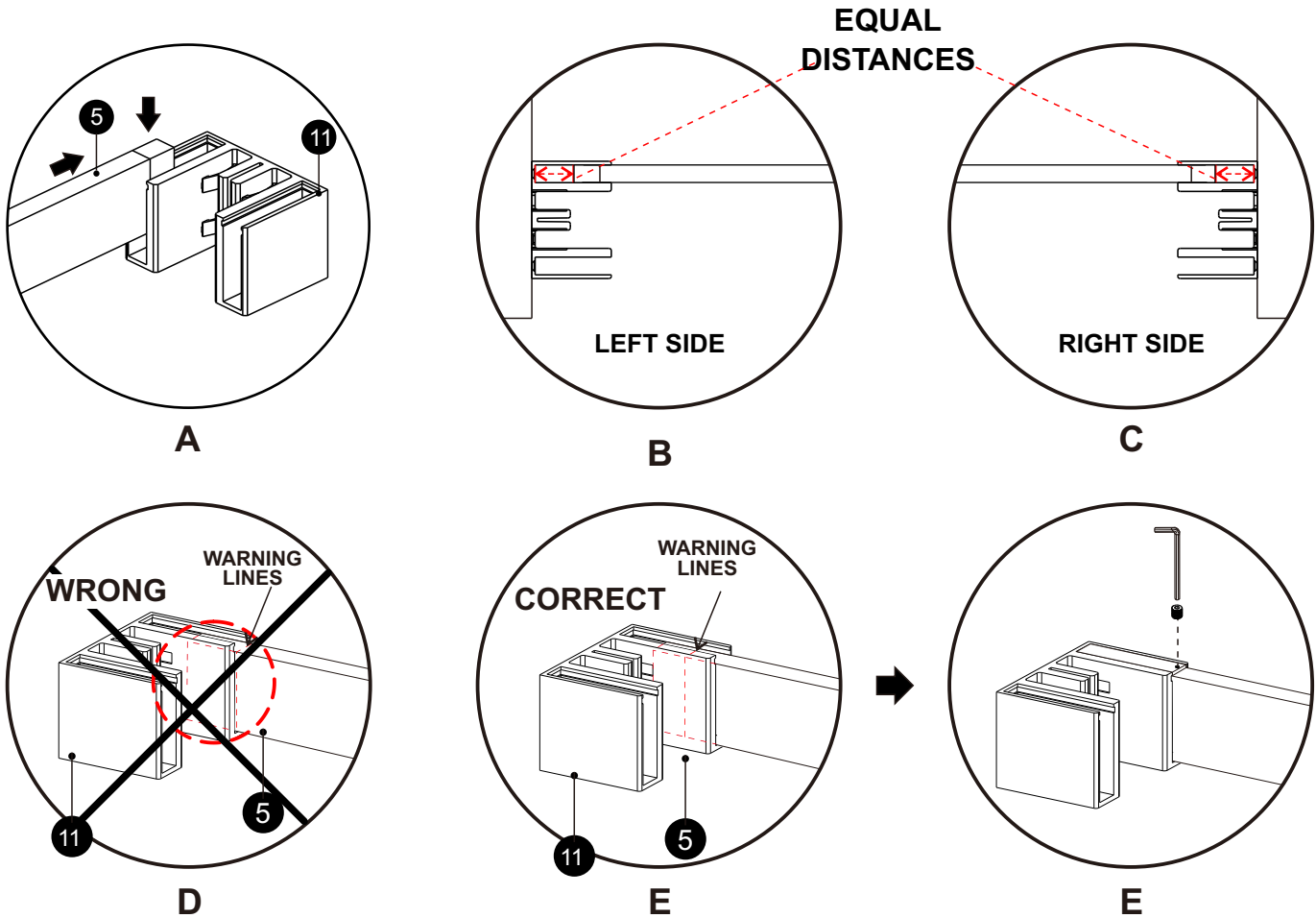


STEP 10 - VERIFY ROLLERS AND PLASTIC WATER DIVERTER ARE INSTALLED PROPERLY AND LEAN DOOR AGAINST WALL OUTSIDE SHOWER.

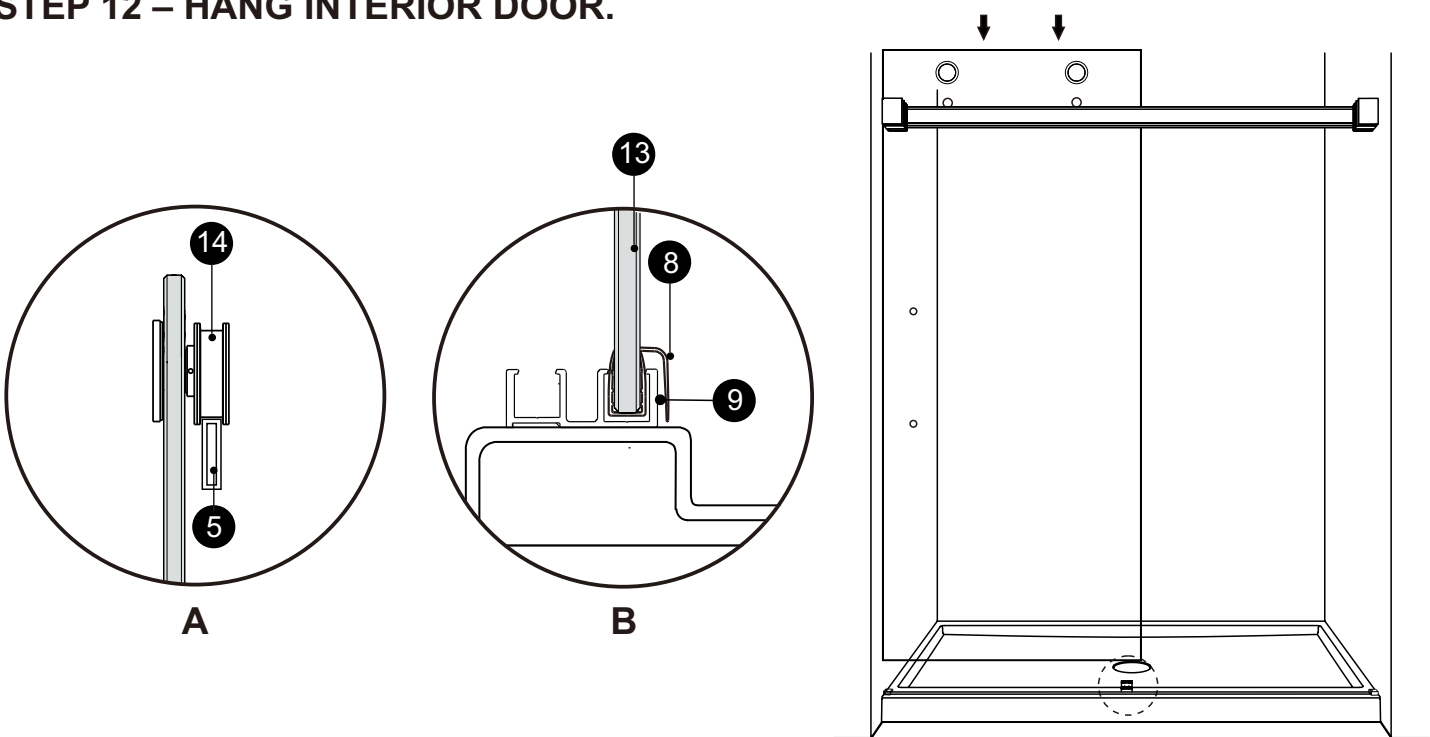


**STEP 11 – INSTALLING INTERIOR TRACK.**

PLACE INTERIOR TRACK INTO WALL BRACKET AS SHOWN (DIAGRAM A). VERIFY TRACK IS CENTERED BY ENSURING MEASUREMENTS ARE EQUAL AND WARNING LINES ARE NOT EXPOSED (DIAGRAM B ,C AND D). ONCE IN PROPER POSITION INSTALL COVERS AND TIGHTEN SET SCREWS (DIAGRAM E).

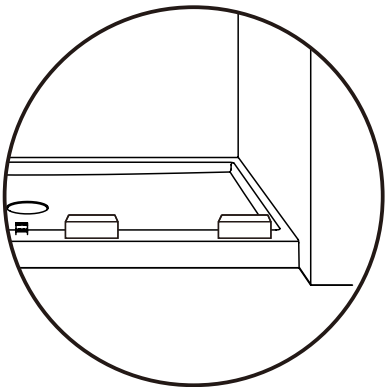
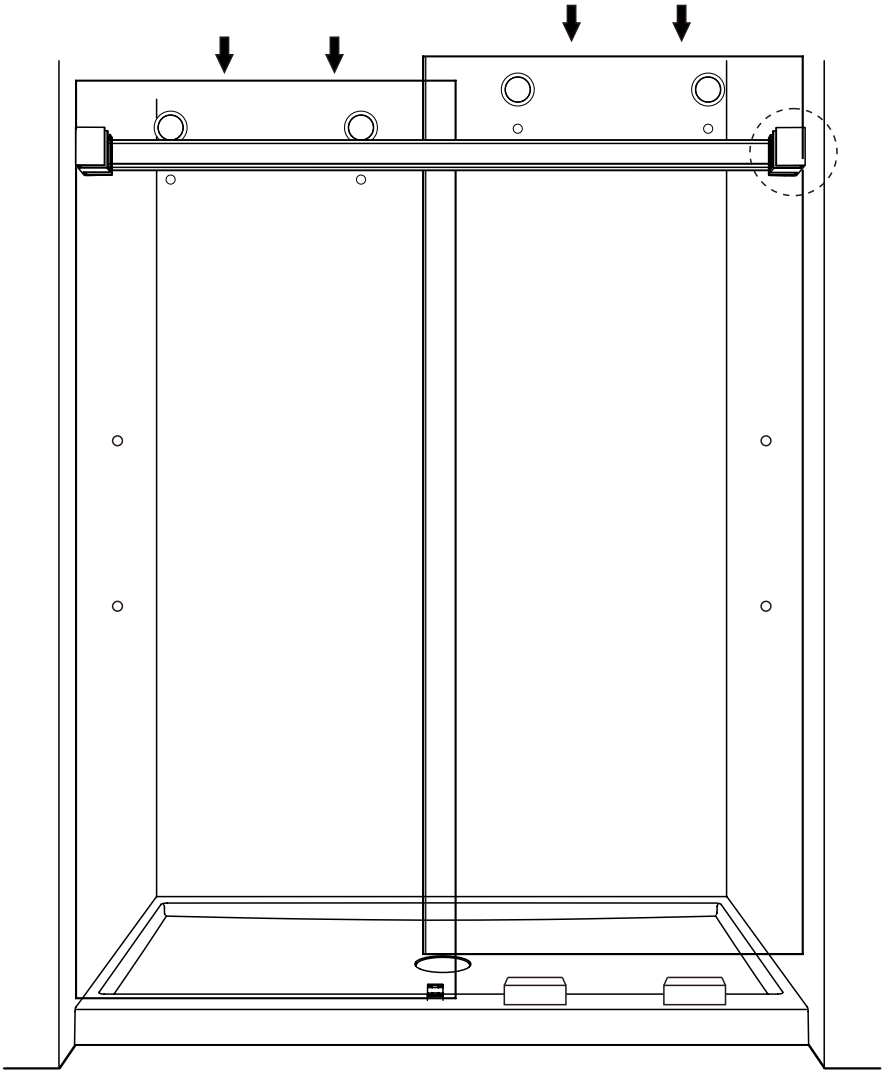


**STEP 12 – HANG INTERIOR DOOR.**

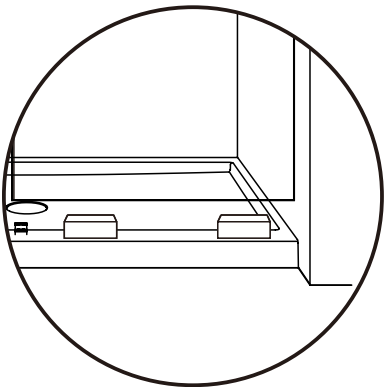


**STEP 13 – INSTALLING EXTERIOR DOOR.**

**PLACE STYROFOAM BLOCKS ONTO CURB (DIAGRAM A). USE THE STYROFOAM BLOCKS FROM PACKAGING LABELED “INSTALLATION TOOL.” SET EXTERIOR DOOR ON TOP OF STYROFOAM BLOCKS AND SLIDE GLASS INTO GLASS POCKET ON WALL BRACKET( DIAGRAM B AND C ).**

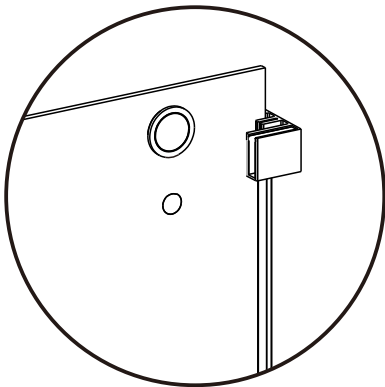


**A**



**B**

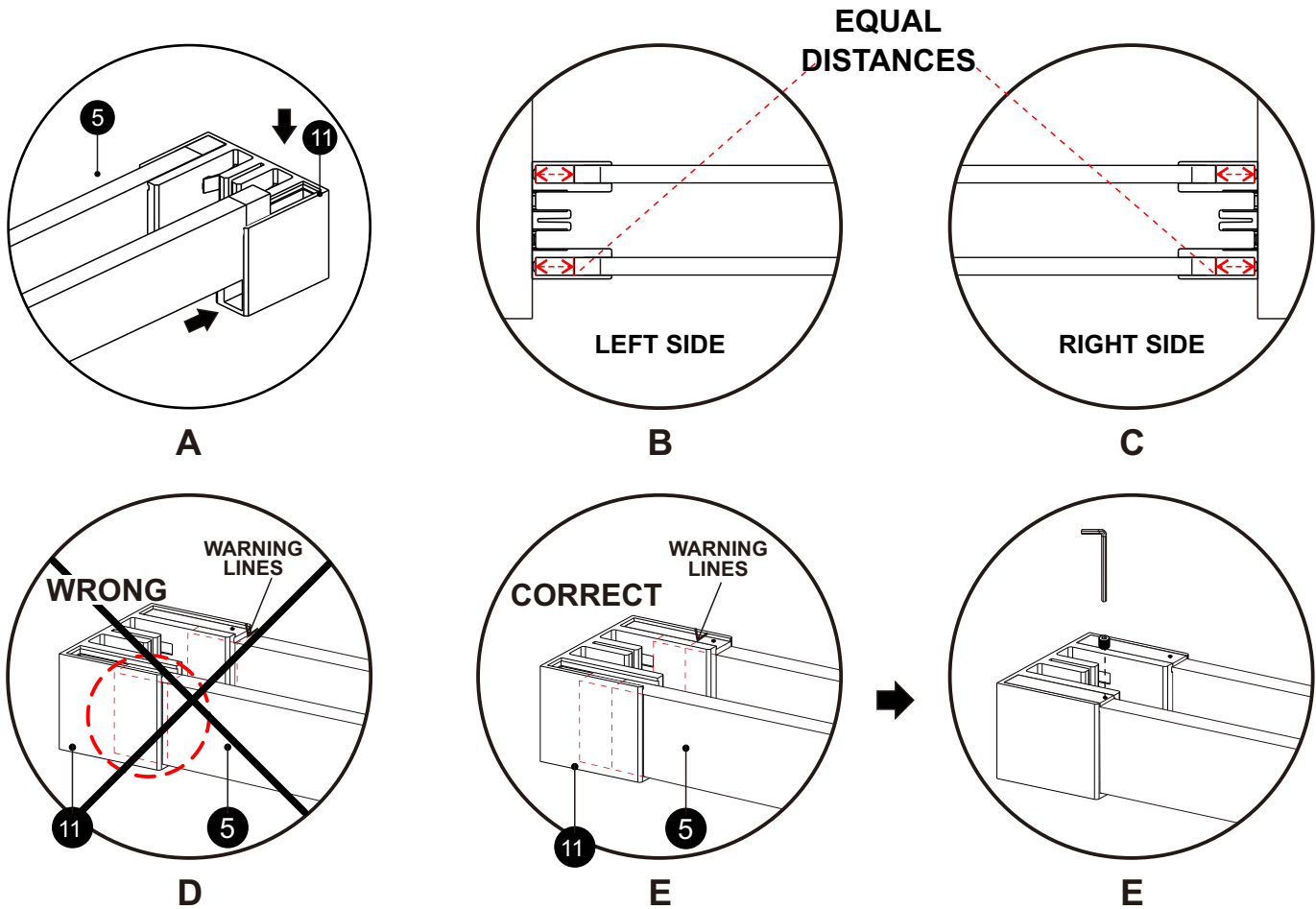
**NOTE: PLACE BLOCKS  
HORIZONTALLY, NOT  
VERTICALLY.**



**C**

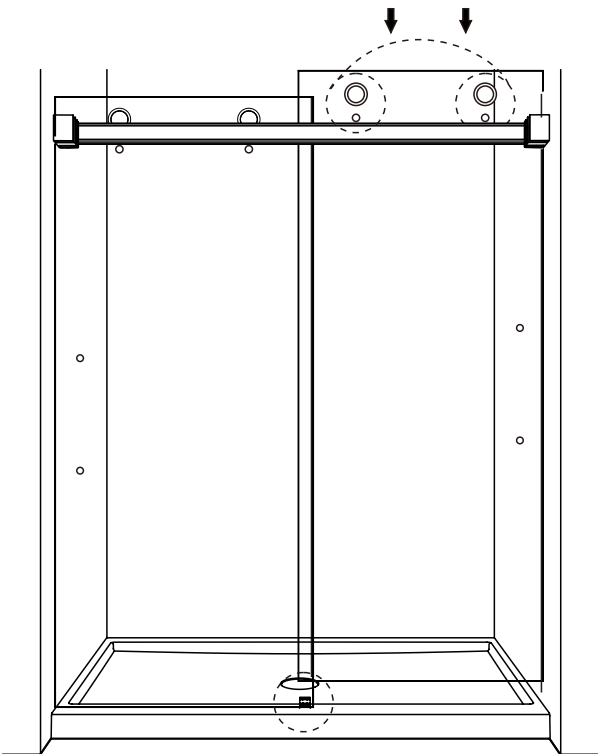
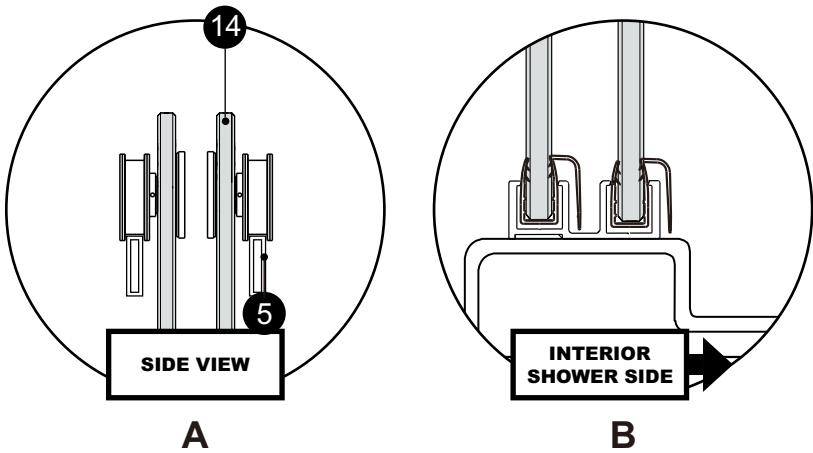
**STEP 14 – INSTALLING EXTERIOR TRACK.**

PLACE EXTERIOR TRACK INTO WALL BRACKET AS SHOWN (DIAGRAM A).  
VERIFY TRACK IS CENTERED BY ENSURING MEASUREMENTS ARE EQUAL AND  
WARNING LINES ARE NOT EXPOSED (DIAGRAM B ,C AND D). ONCE IN PROPER  
POSITION INSTALL COVERS AND TIGHTEN SET SCREWS (DIAGRAM E).



**STEP 15 – HANG EXTERIOR DOOR.**

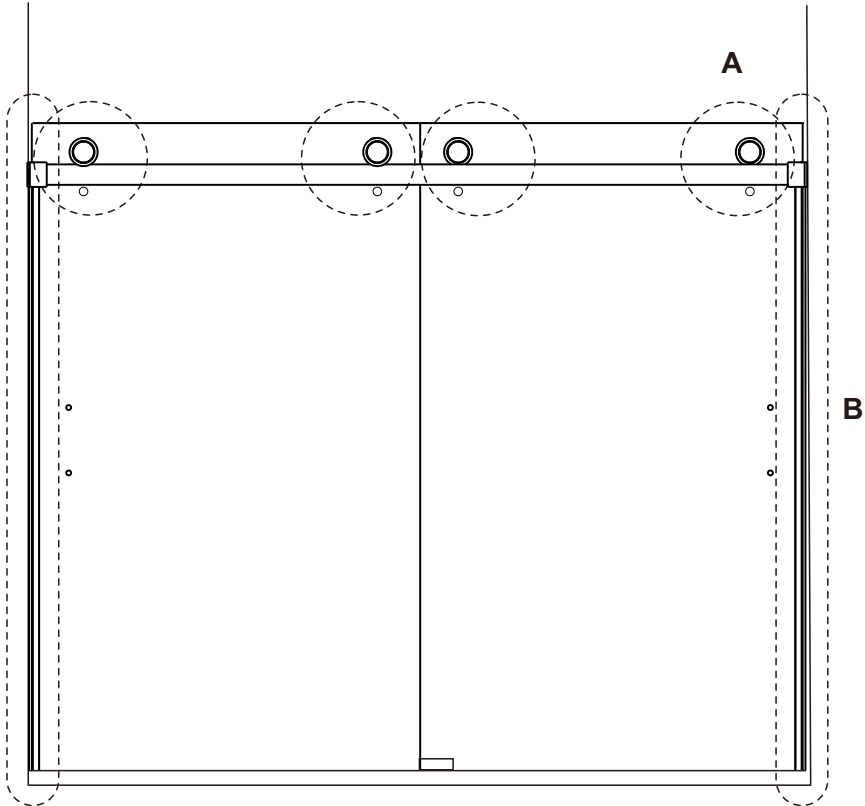
IF DOOR ALIGNS PROPERLY WITH SIDE WALLS GO  
TO STEP 15 IF NOT REFER TO STEP 15A.



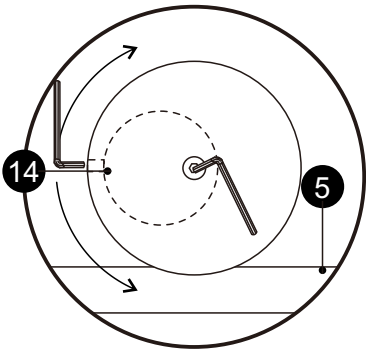


STEP 16 - ALIGNING DOORS TO WALL

ROTATE ROLLERS TO CLOSE GAPS USING PROVIDED ALLEN WRENCH AS SHOWN ( DIAGRAM A ). ONCE ALIGNED, TIGHTEN ROLLER SCREW AND INSTALL ROLLER CAP ( DIAGRAM B AND C ).

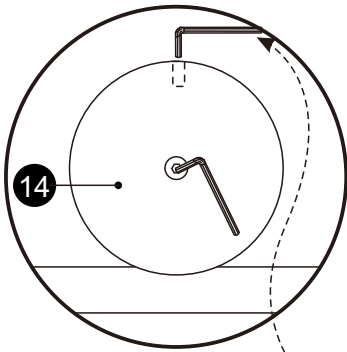


EXTERIOR VIEW



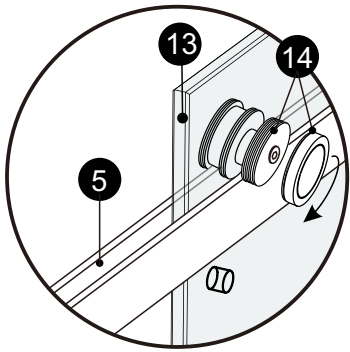
A

NOTE: LOOSEN SCREW 1-2  
TURNS TO RELEASE PRESSURE.



B

NOTE: HOLD ALLEN WRENCH  
IN PLACE WHEN TIGHTENING  
SCREW.

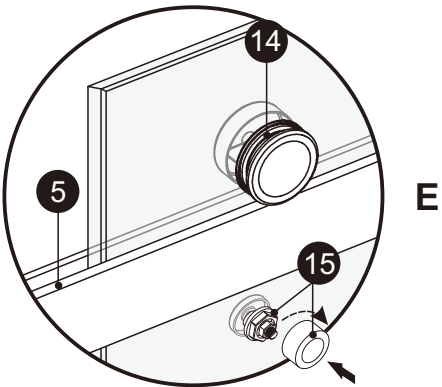
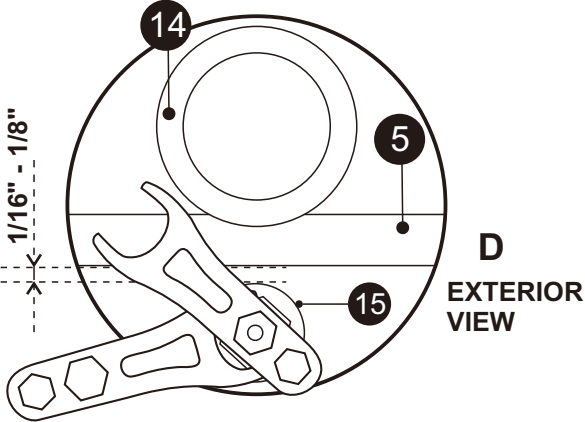
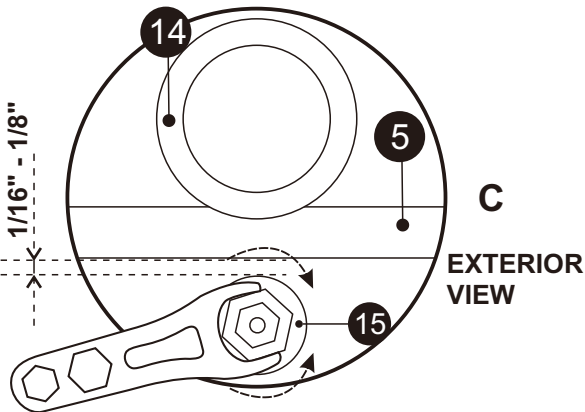
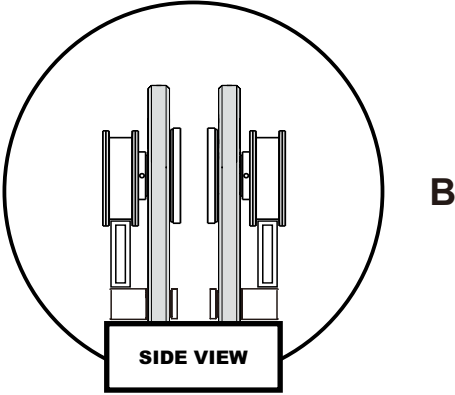
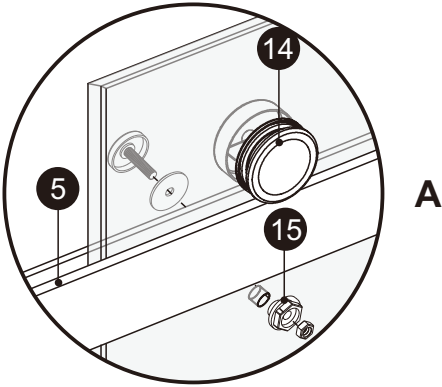
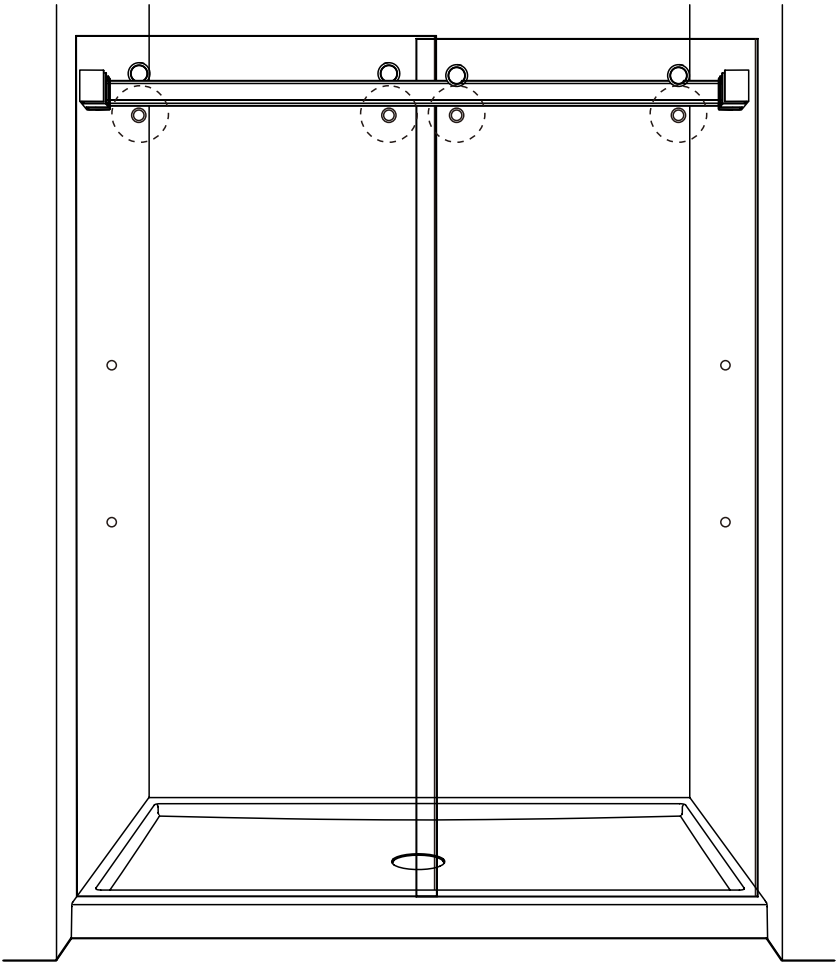


C

INTERIOR VIEW

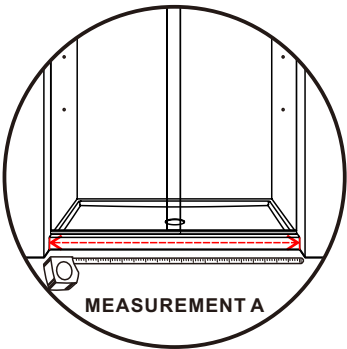
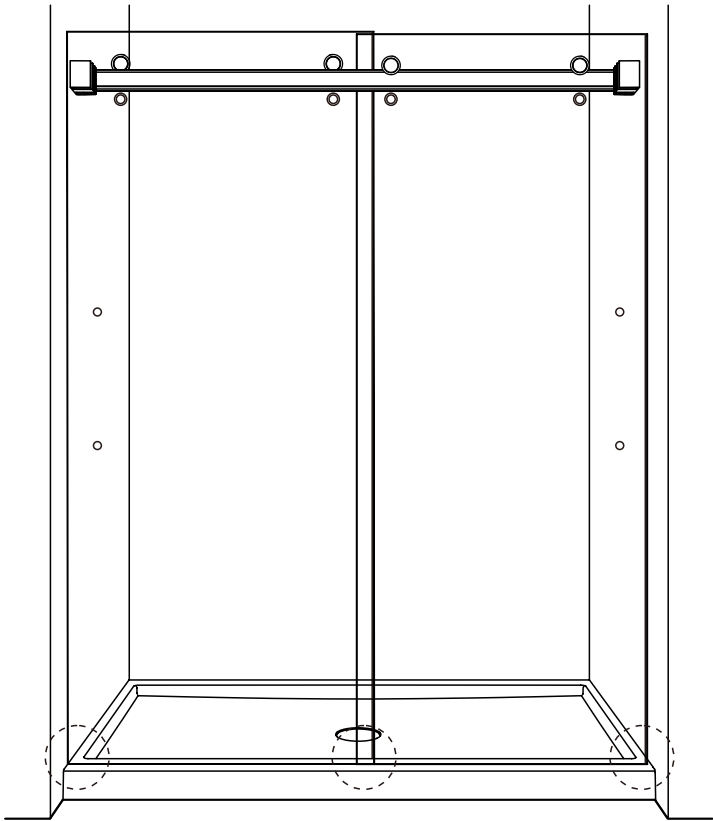
STEP 17 – INSTALL ANTI-LIFT PINS.

INSTALL ANTI-LIFT PINS BELOW TRACK (DIAGRAM A AND B). ADJUST PINS BY ROTATING BUSHING (DIAGRAM C). ONCE IN CORRECT LOCATION, HOLD BUSHING IN PLACE WITH WRENCH AND TIGHTEN NUT (DIAGRAM D). INSTALL CAP (DIAGRAM E). REPEAT STEP FOR OTHER THREE PINS.

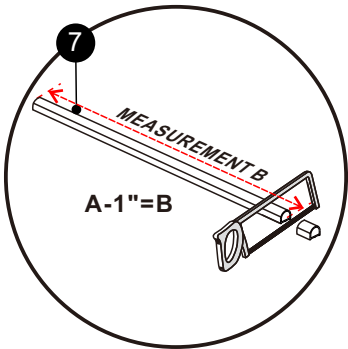


STEP 18 – FIT BOTTOM ALUMINUM WATER GUARD.

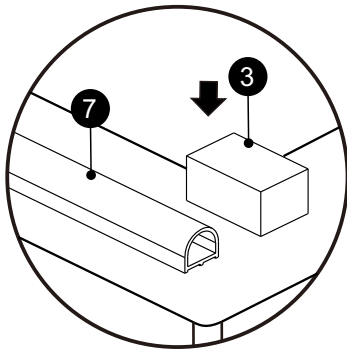
MEASURE OPENING BETWEEN BOTH WALLS (DIAGRAM A). NEXT, CUT BOTTOM WATER GUARD BASED OFF "MEASUREMENT B". OBTAIN "MEASUREMENT B" BY TAKING YOUR "MEASUREMENT A" AND SUBTRACT 1" (DIAGRAM B). PLACE BOTTOM WATER GUARD AND CORNER BLOCKS ON CURB (DIAGRAM C). PLACE WATER GUARD AGAINST GUIDE (DIAGRAM D). ENSURE MEASUREMENT AT BOTH POINTS ARE THE SAME (DIAGRAM E). MARK LOCATION OF BOTTOM WATER GUARD WITH A PENCIL (DIAGRAM F).



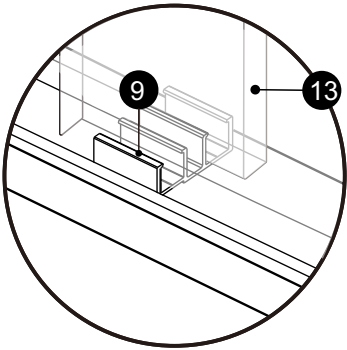
A



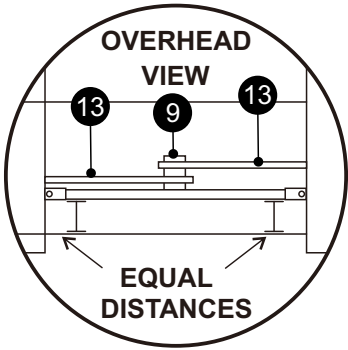
B



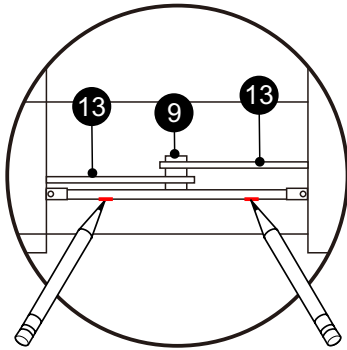
C



D



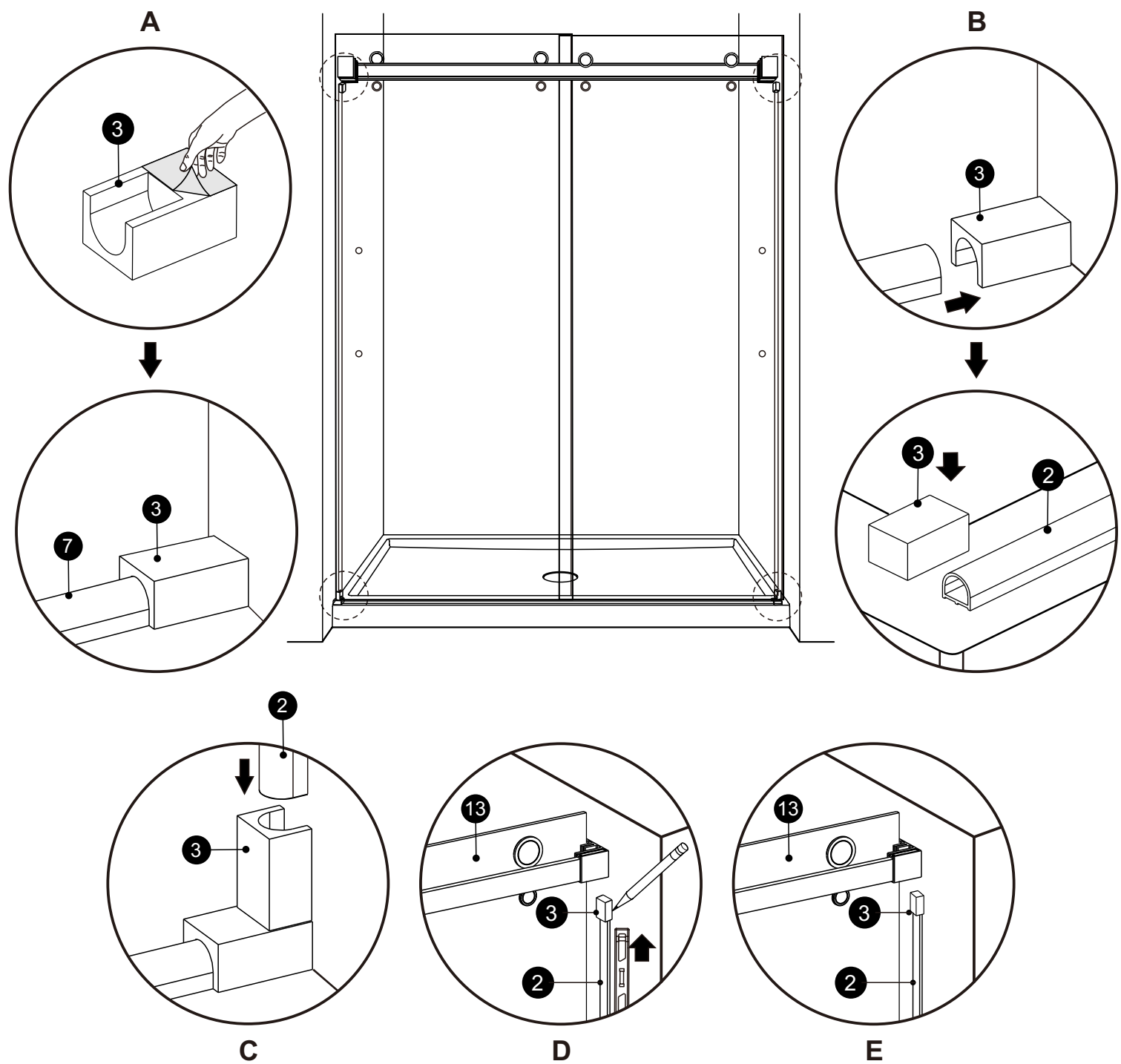
E



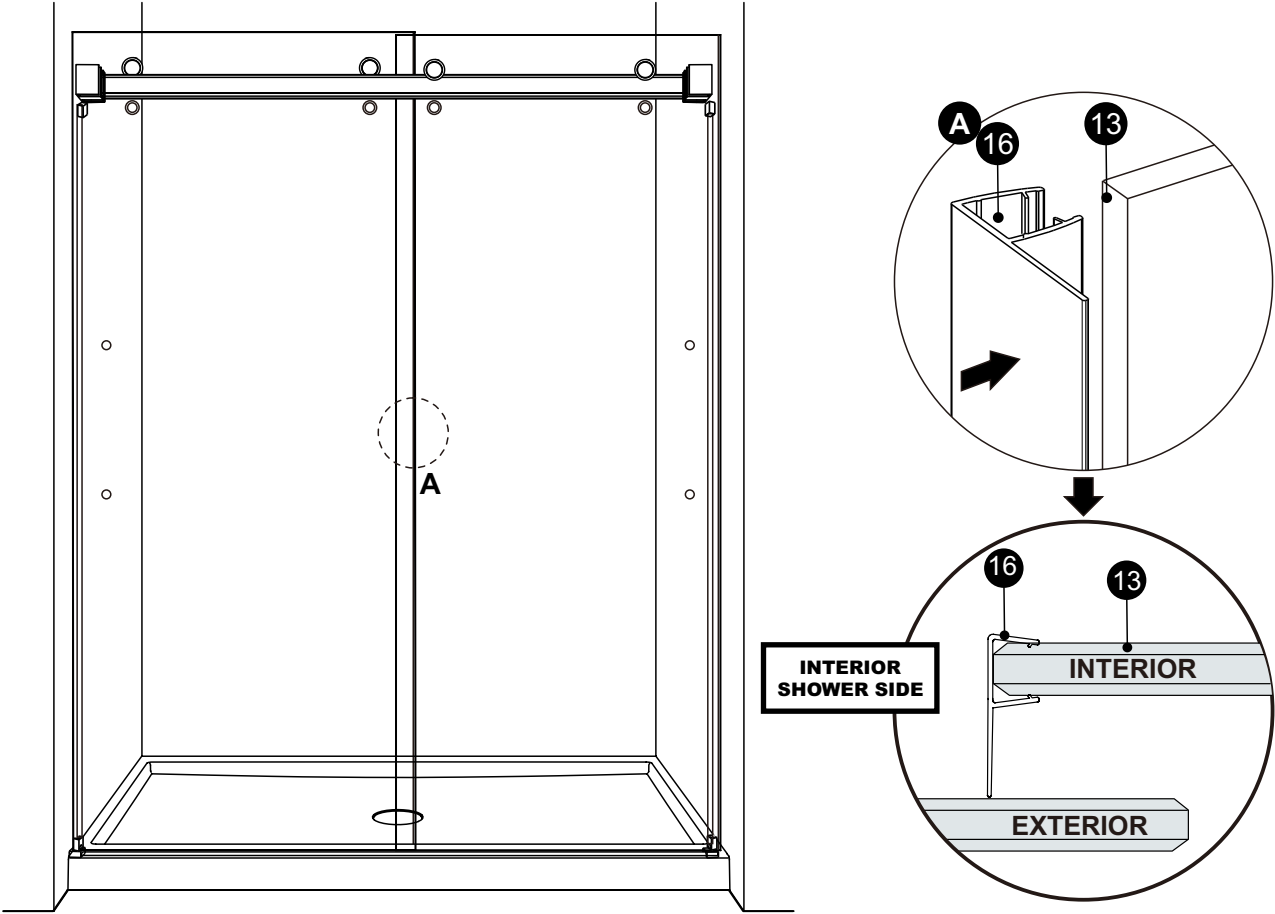
F

**STEP 19 – INSTALL ALUMINUM WATER GUARD SET**

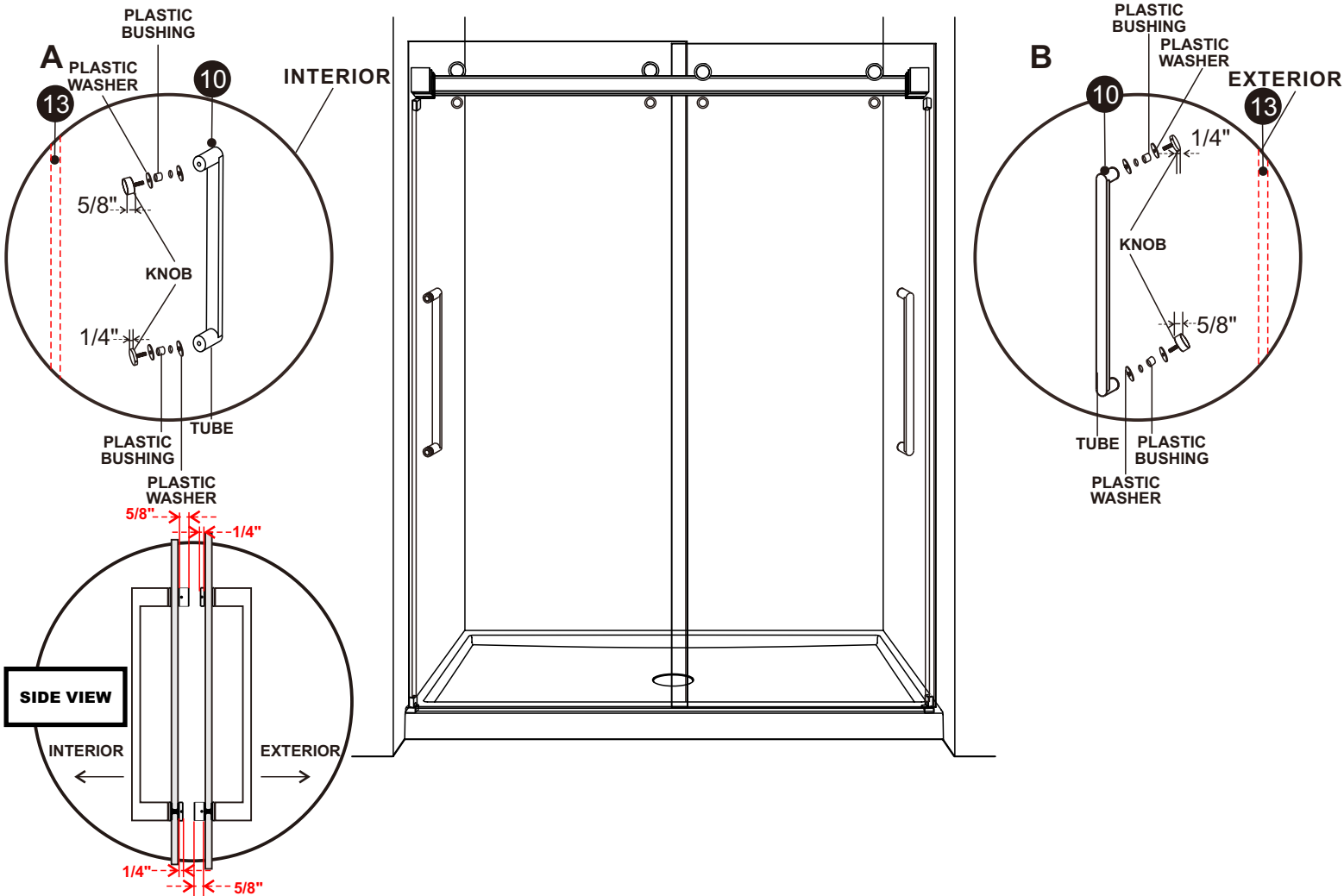
REMOVE ONLY ONE CORNER BLOCK, PEEL OFF BACK OF STICKY TAB AND STICK ON CURB (DIAGRAM A). REMOVE BOTTOM WATER GUARD AND OTHER CORNER BLOCK, PEEL OFF BACK OF STICKY TABS, AND REINSTALL USING PENCIL MARKS AS A GUIDE (DIAGRAM B). INSTALL LOWER BLOCK ON VERTICAL WALL, INSERT SIDE WALL WATER GUARD INTO BOTTOM BLOCK, DO NOT REMOVE STICKY TAB BACKING AT THIS TIME (DIAGRAM C). PLUMB AND MARK TOP WITH PENCIL (DIAGRAM D), NOW REMOVE STICKY TAB BACKING AND INSTALL WATER GUARD AND TOP BLOCK (DIAGRAM E). REPEAT DIAGRAMS C, D AND E FOR OPPOSITE WALL.



STEP 20 – INSTALL F-SEAL.

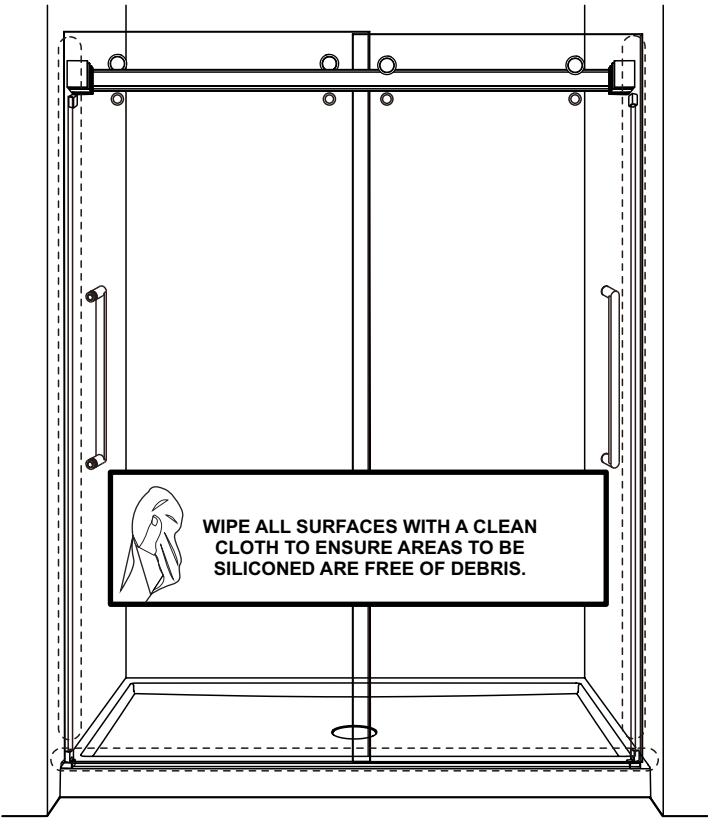


STEP 21 – INSTALL HANDLES.

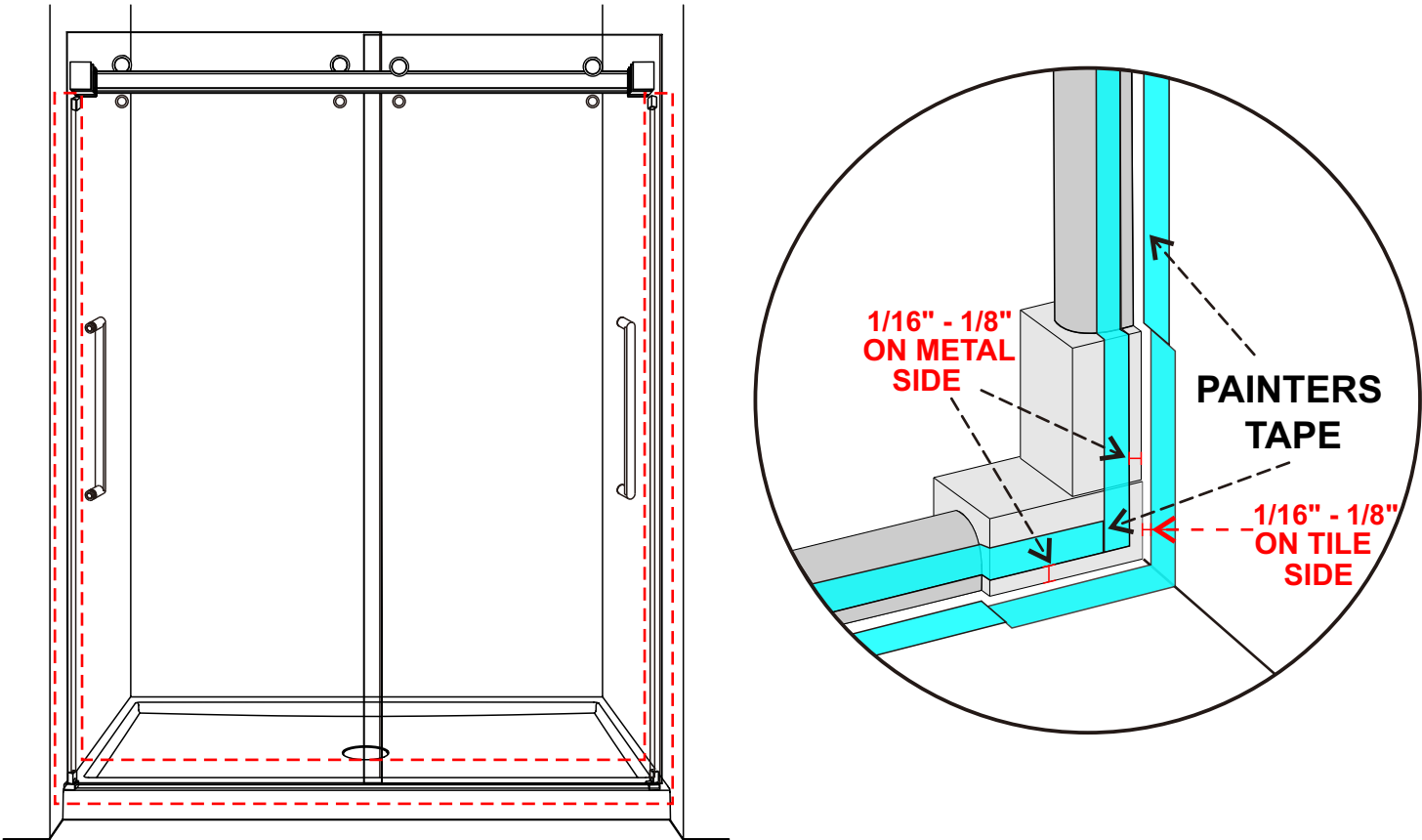


**STEP 22 - APPLYING SILICONE.**

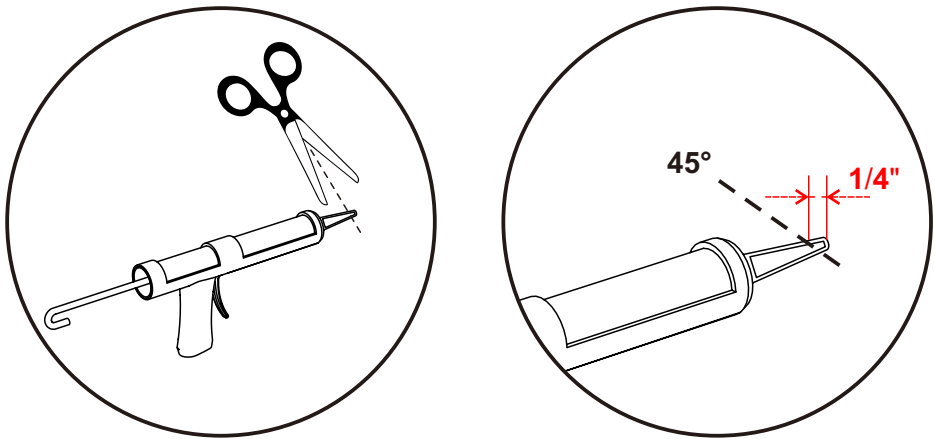
**A: WIPE DOWN AREAS SHOWN WITH CLEAN CLOTH AND DENATURED OR ISOPROPYL ALCOHOL(INTERIOR AND EXTERIOR).**



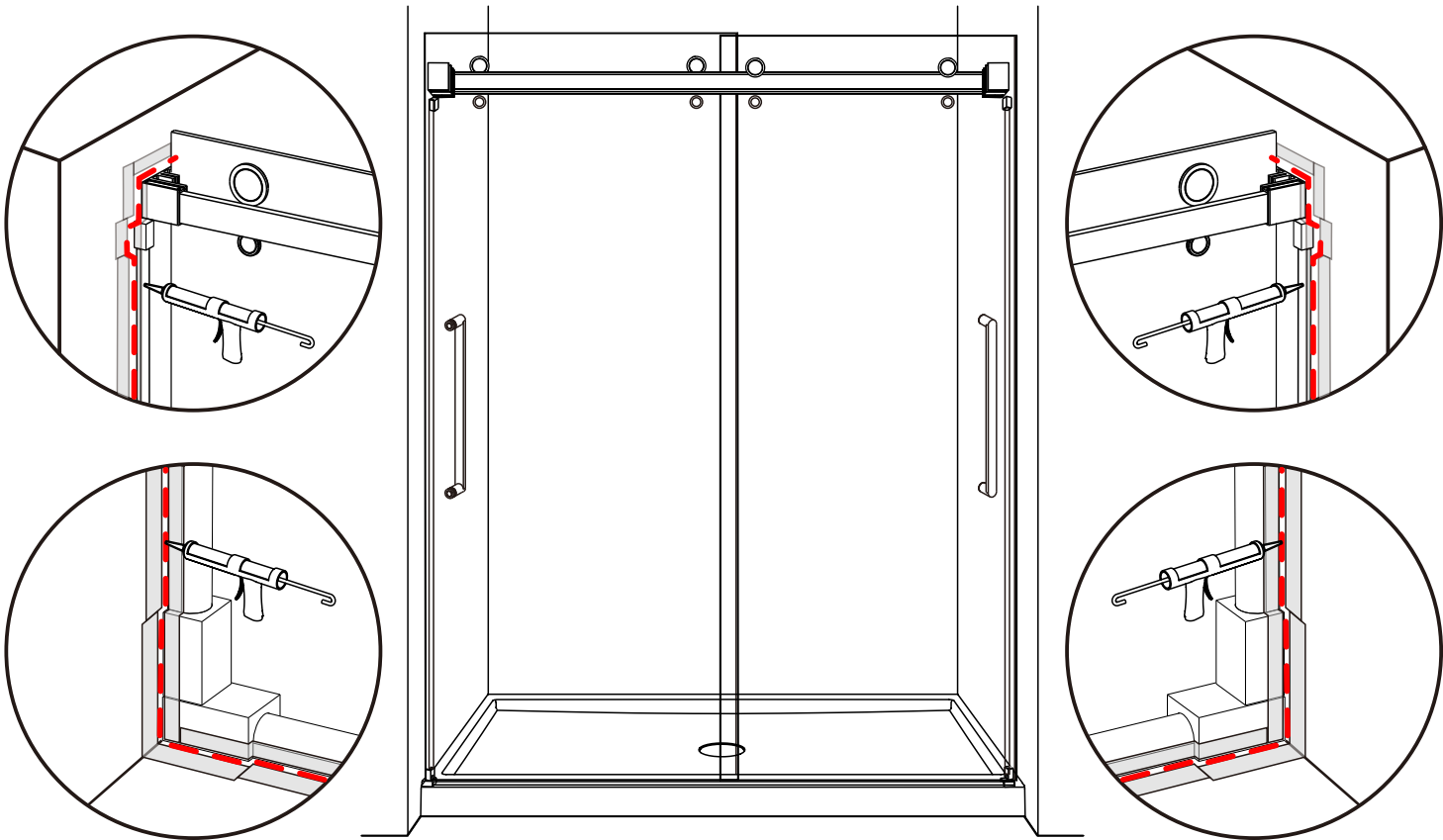
**B:TAPE OFF AREAS SHOWN WITH PAINTERS TAPE(INTERIOR AND EXTERIOR).**



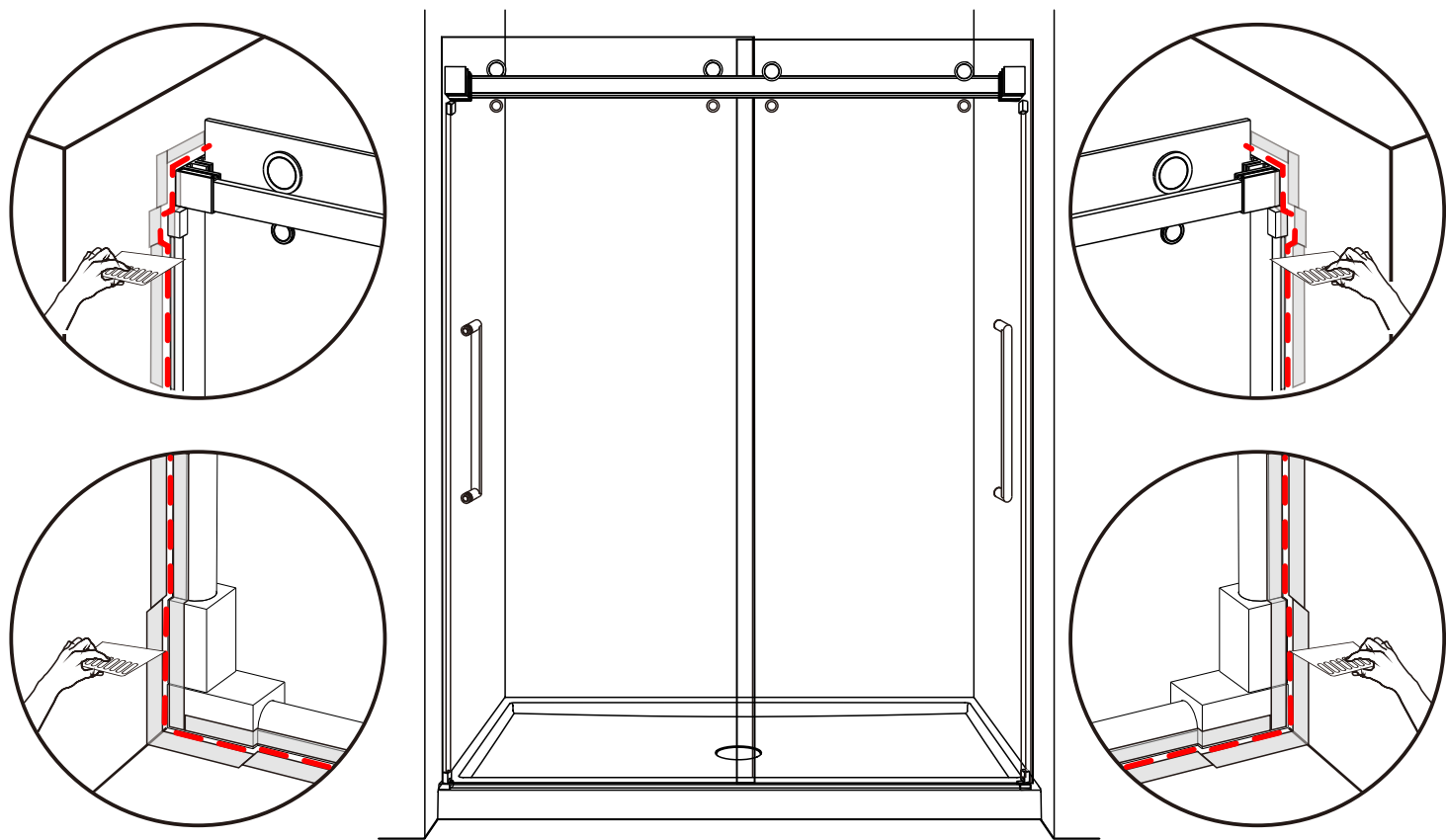
**C: CUT OFF TIP OF CAULKING TUBE AT AN ANGLE.**



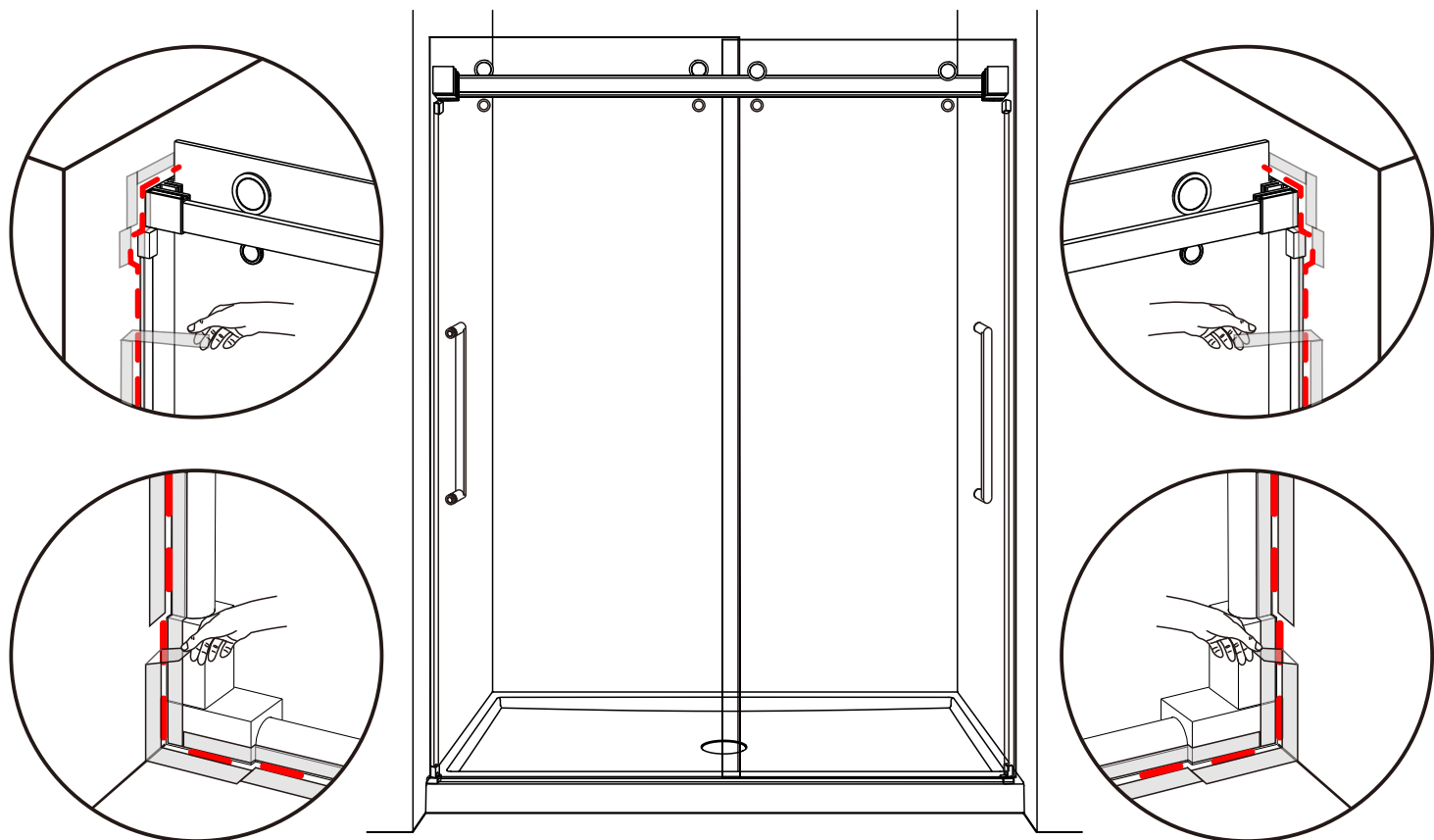
**D: APPLY CAULKING AS SHOWN. ENSURE CAULKING IS ADDED TO AREAS REPRESENTED BY THE DOTTED LINE.**



**E:TOOL WITH PROVIDED SEALING FINISHING TOOL (INTERIOR AND EXTERIOR).  
USE PROVIDED SEALANT FINISHING TOOL TO SMOOTH OUT AND REMOVE  
EXCESS SILICONE.**



**F:REMOVE TAPE (INTERIOR AND EXTERIOR) .**





G:LET CAULKING CURE FOR 48 HOURS BEFORE USE.

